



A presentation for master planning services for the

# Springfield Senior High School Master Plan

Site Analysis Review & Preliminary Site Design

May 18, 2009

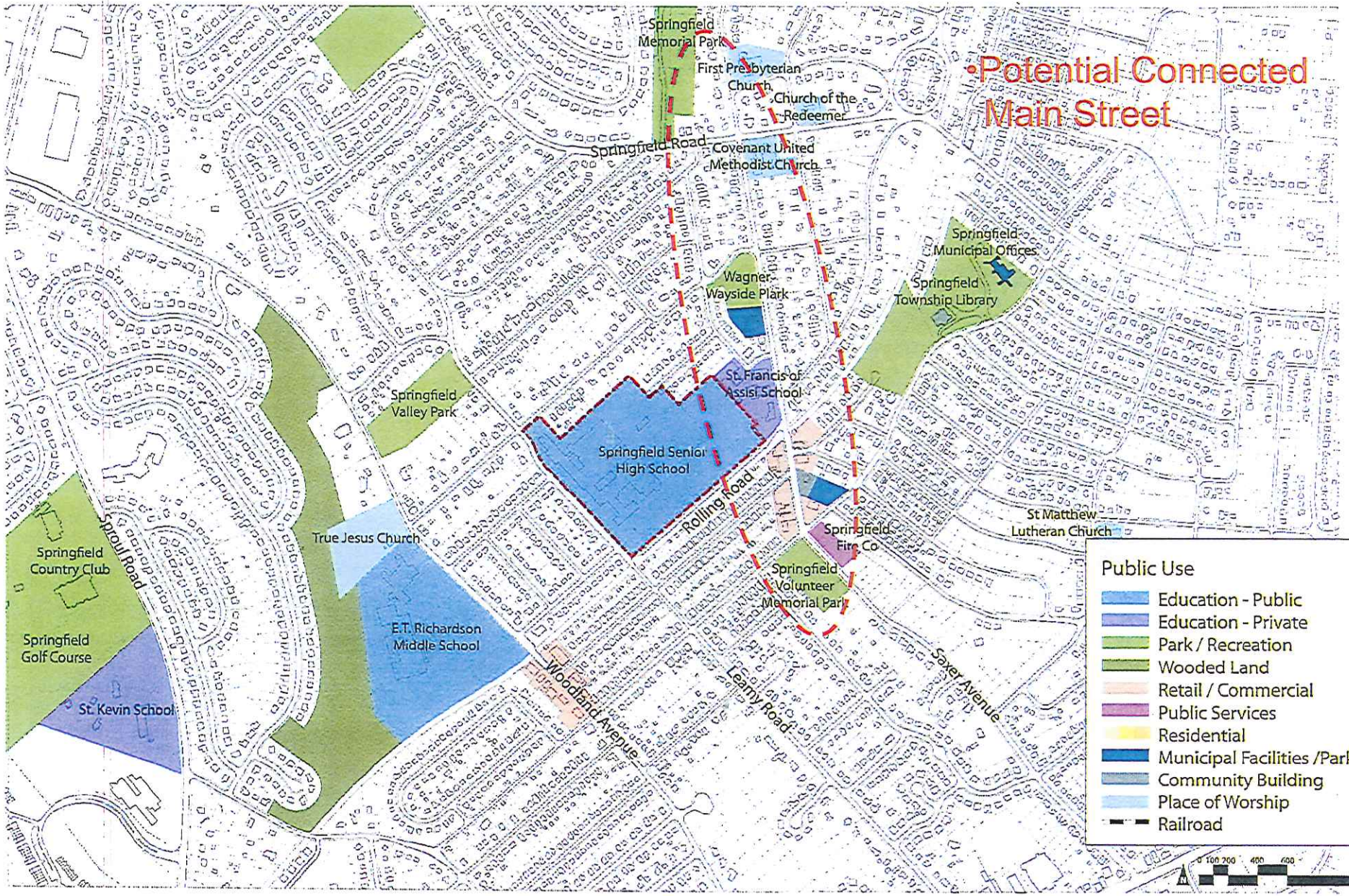


## **Agenda**

- Site Analysis Review
- Site Opportunities and Constraints
- Renovation Challenges
- Review of Guiding Principles & Goals
- Programmatic Elements
- Preliminary Site Layouts
- Program and Academic Model



# Site Analysis Review



Potential Connected Main Street

- Public Use**
- Education - Public
  - Education - Private
  - Park / Recreation
  - Wooded Land
  - Retail / Commercial
  - Public Services
  - Residential
  - Municipal Facilities / Parking
  - Community Building
  - Place of Worship
  - - - Railroad

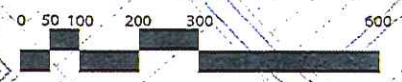


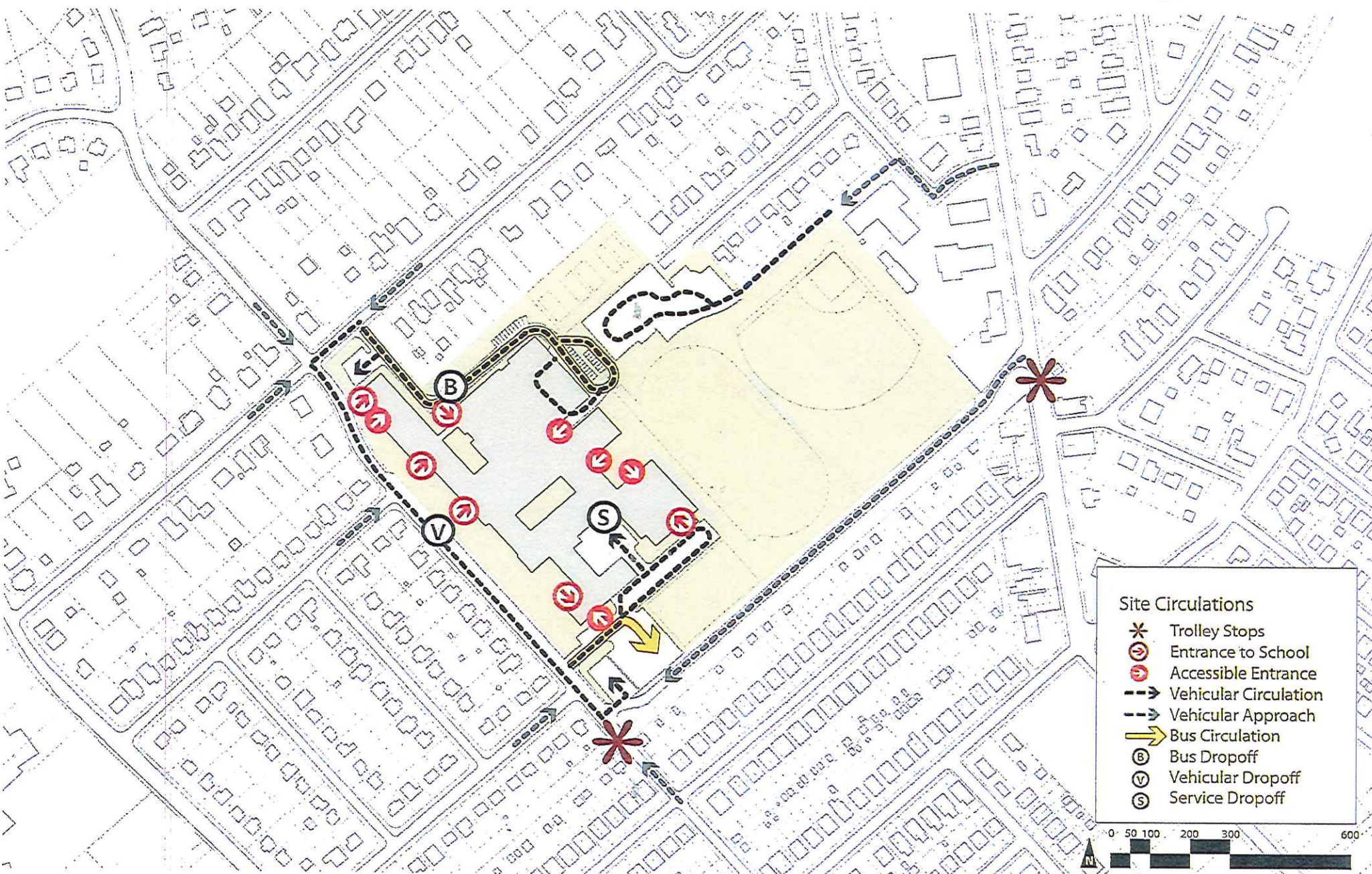


**Zone B Conditional Use**

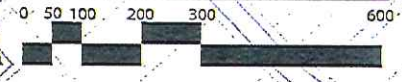
- Max Height - 35ft
- Max Impervious - 40%
- Max Building Coverage - 30%

— — Setback

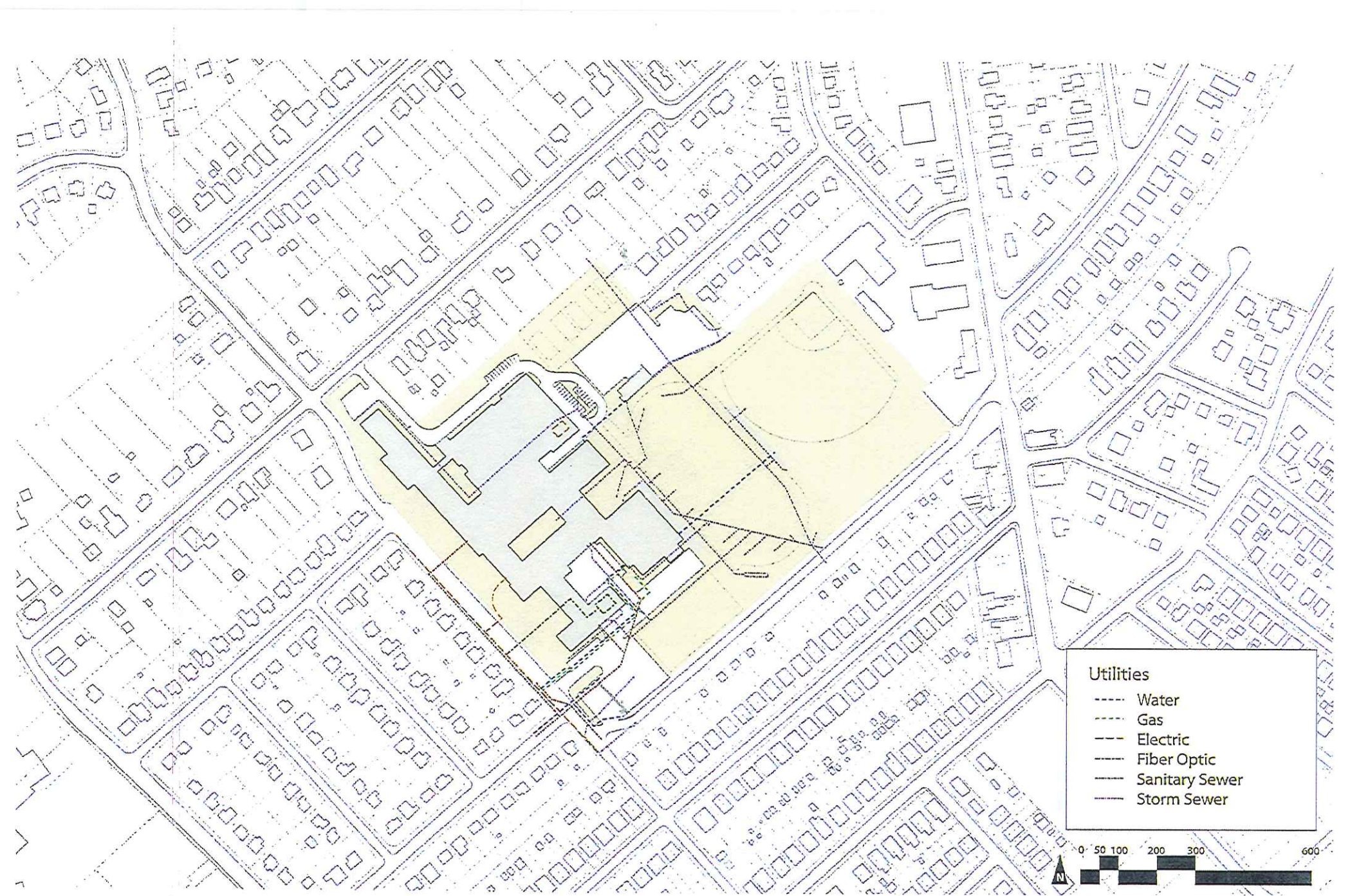




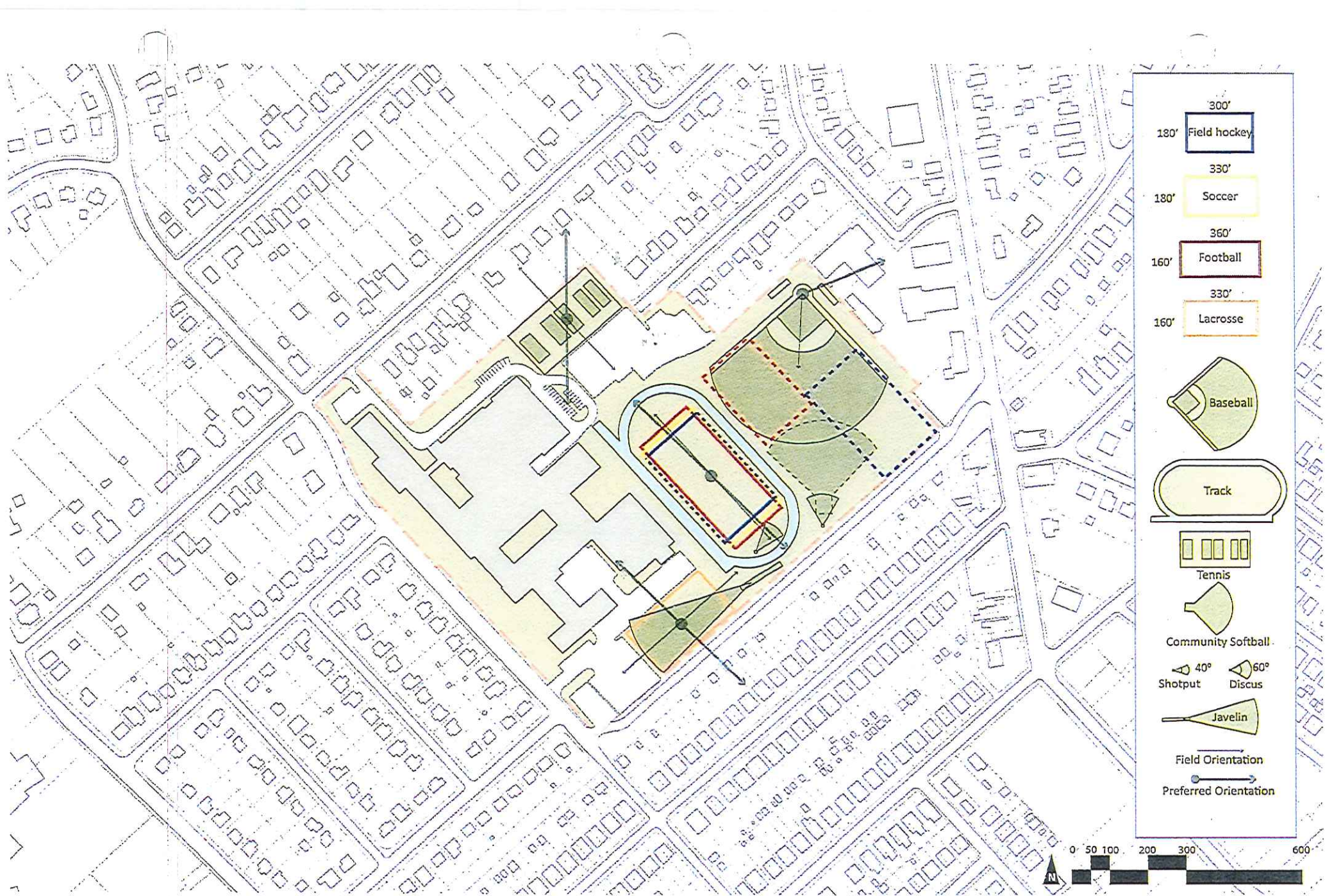
- Site Circulations**
- \* Trolley Stops
  - ⊙ Entrance to School
  - ⊙ Accessible Entrance
  - - -> Vehicular Circulation
  - - -> Vehicular Approach
  - Bus Circulation
  - Ⓟ Bus Dropoff
  - Ⓟ Vehicular Dropoff
  - Ⓟ Service Dropoff





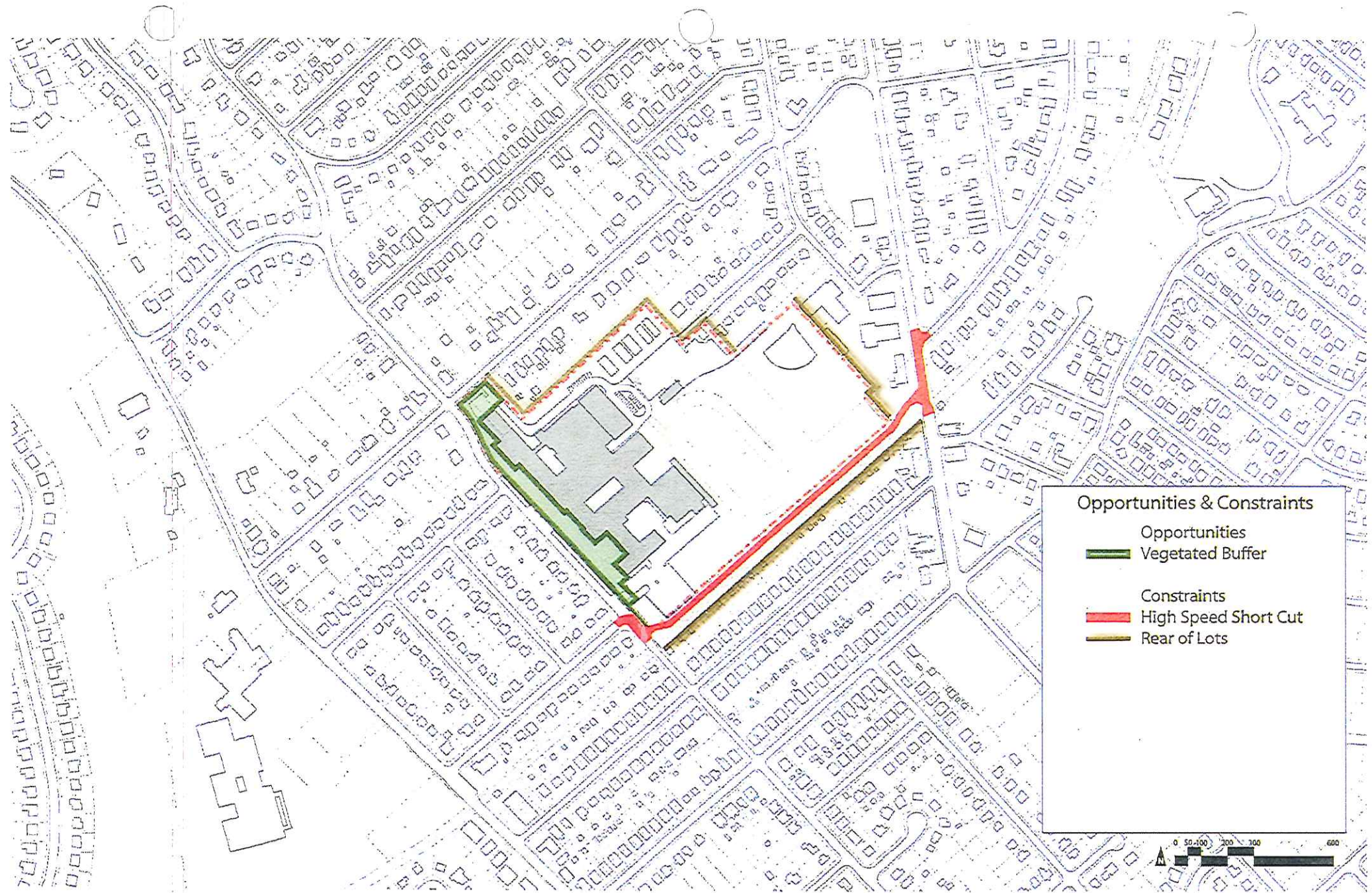


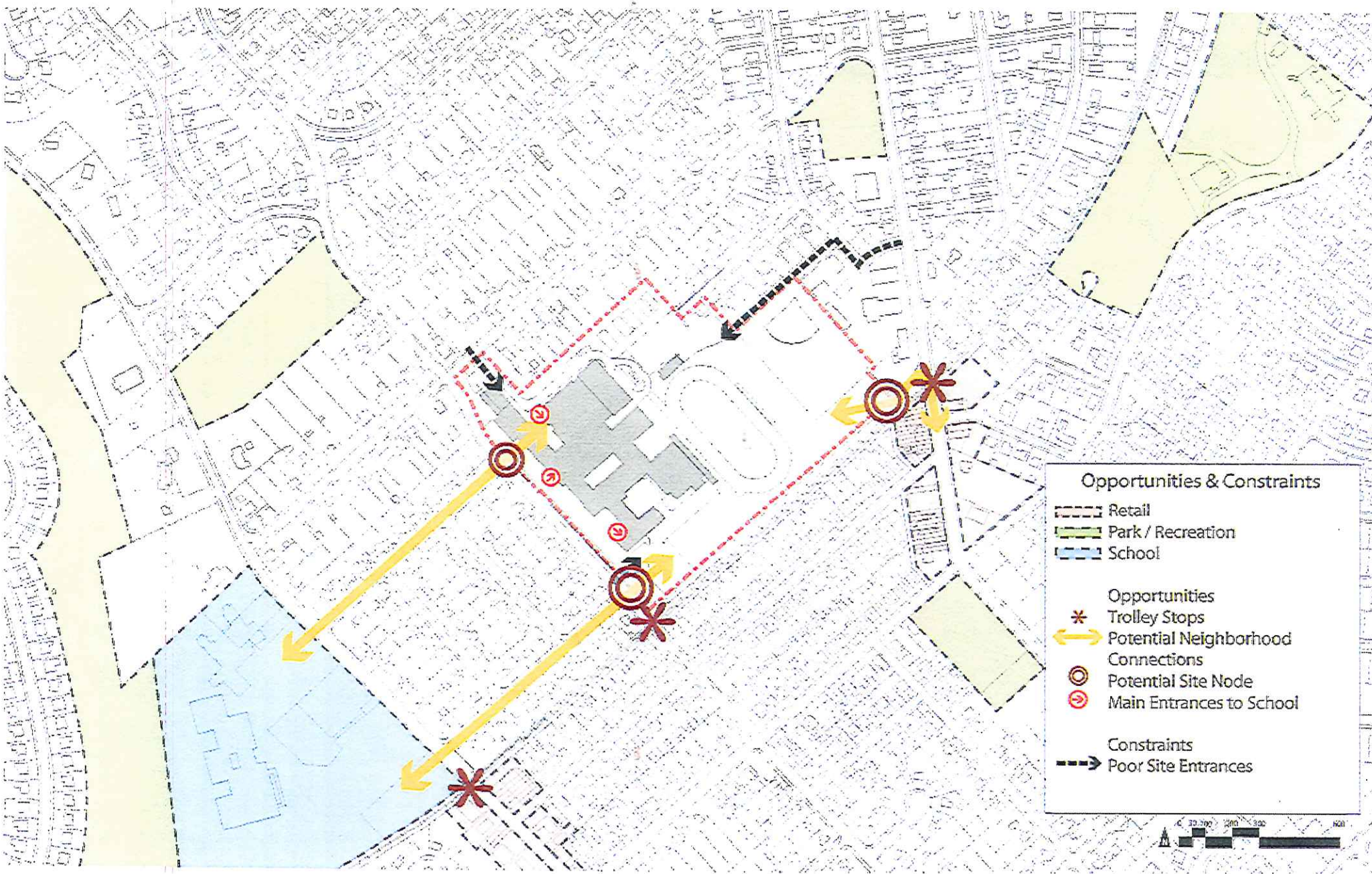






## Site Opportunities and Constraints





**Opportunities & Constraints**

- Retail
- Park / Recreation
- School

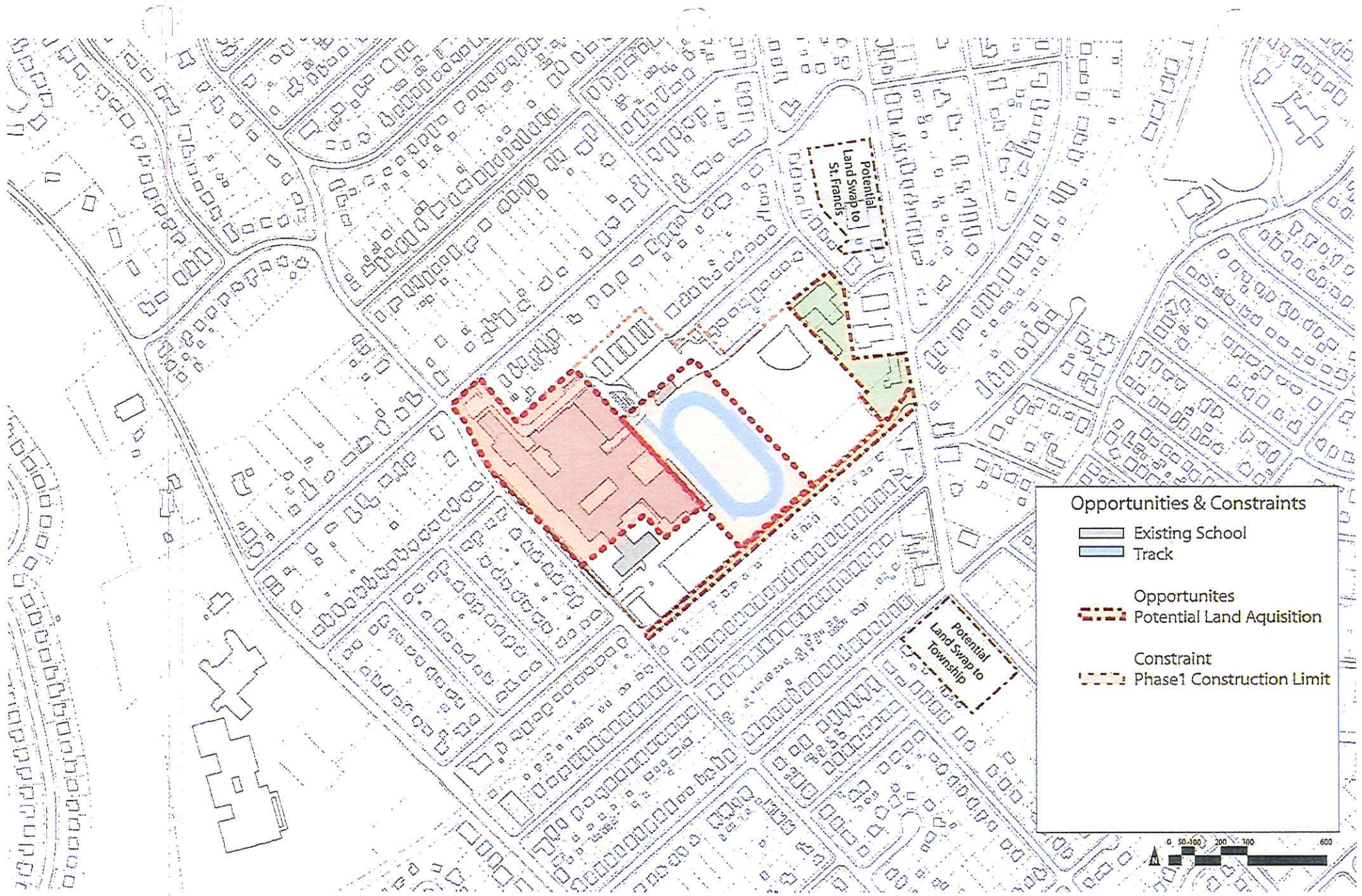
**Opportunities**

- Trolley Stops
- Potential Neighborhood Connections
- Potential Site Node
- Main Entrances to School

**Constraints**

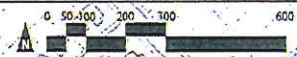
- Poor Site Entrances





**Opportunities & Constraints**

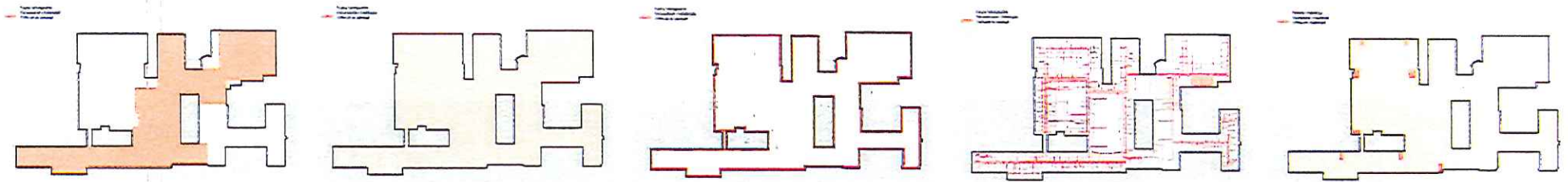
- Existing School
- Track
- Opportunities
- Potential Land Acquisition
- Constraint
- Phase 1 Construction Limit





## Renovation Challenges

Which portion of the school can be appropriately preserved until the second phase?



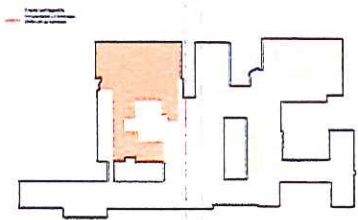
Asbestos

Roofing

Envelope

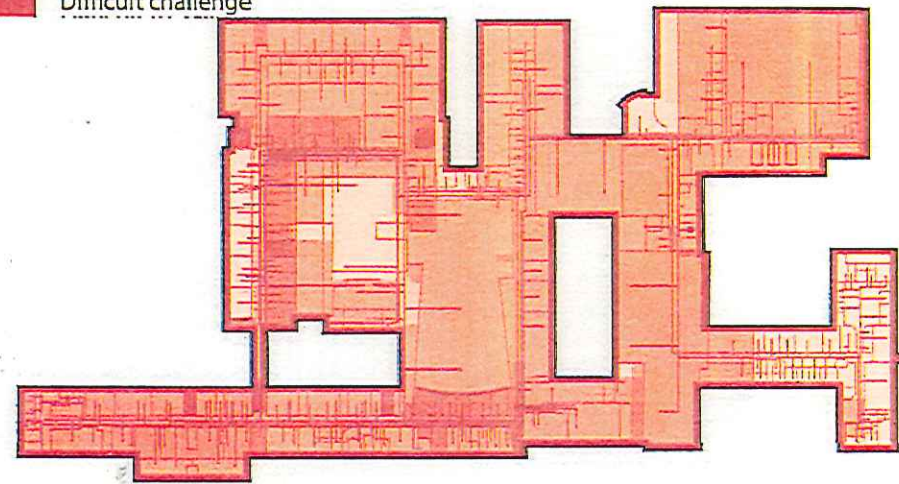
MEP

Fire Safety



Day Lighting

Circulation &  
Accessibility



Composite of all Issues



**Review of Guiding Principles & Goals**



## Guiding Principles

- Strengthen connections to the broader community
- Promote the use of the School as a place for the community:  
Town Center
- Plan for a School that meets the needs of educators, students and taxpayers
- Create the optimal teaching and learning environment for education.
- Create a sustainable School that deploys the best in high performance building design to reduce energy consumption and promote classroom achievement.

## Planning Goals

- Promote the School's civic presence within the community
- Increase the use of the building and site for community events
- Integrate the school into the neighborhood
- Respect neighboring residential uses
- Enhance nearby retail
- Connect the school to other open spaces and civic institutions within the township

## Site/Campus Goals

- Improve circulation and connections to school.
- Add athletic fields and improve their quality.
- Increase the number of parking spaces on campus if it does not interfere with the existing or proposed increase of athletic fields.
- Minimize vehicular circulation within the campus.
- Promote walking and public transit as alternative means to arrive at the school.
- Protect the existing track, if possible.

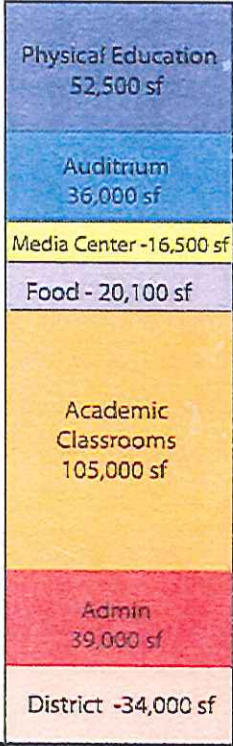
## Sustainability Goals

- Reduce storm water runoff from the site.
- Reduce nighttime light pollution.
- Employ techniques that reduce the heat island effect of the property.

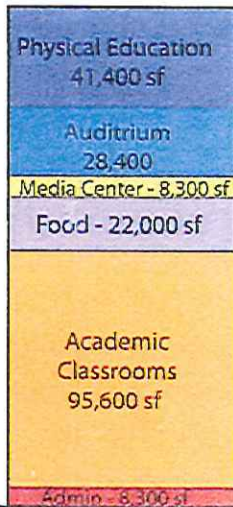


**Programmatic Elements**

Existing Building  
303,100 sf

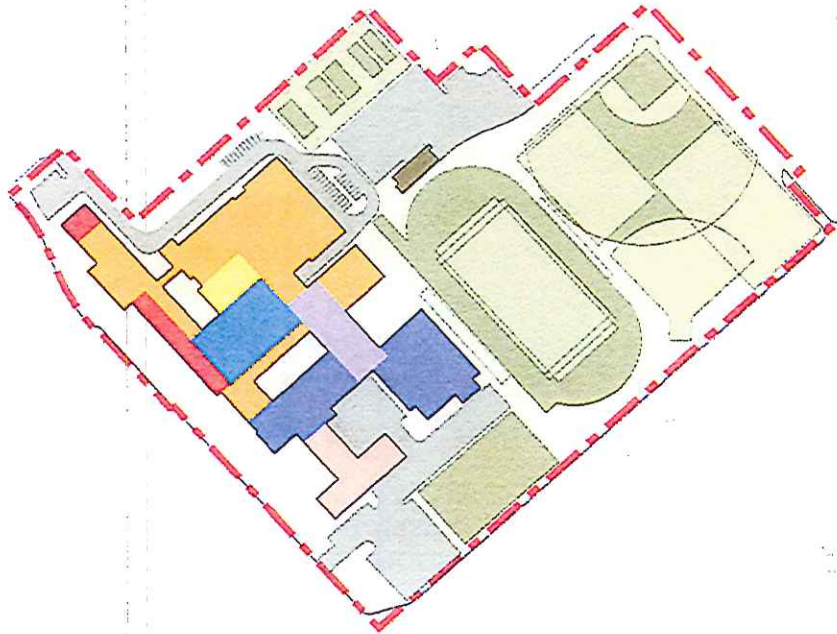


Draft Proposed Building  
204,000 sf



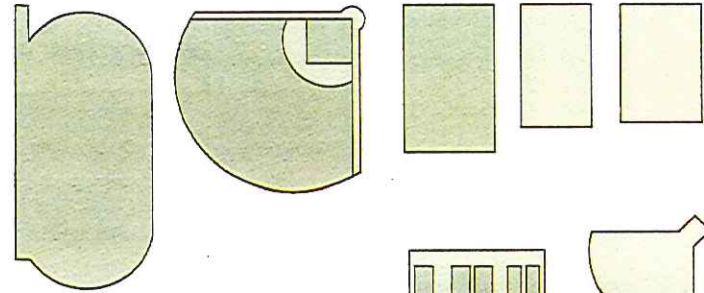
## Community Amenities

School Property  
1,059,100 sf - 24 Acres



### Athletic Fields

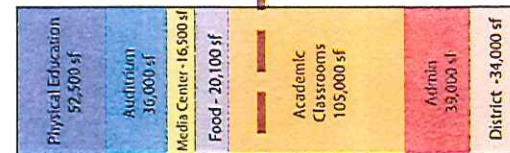
|            |            |           |           |           |
|------------|------------|-----------|-----------|-----------|
| Track      | Base Ball  | Field     | Field     | Field     |
| 179,740 sf | 119,600 sf | 35,000 sf | 38,000 sf | 54,000 sf |



Building  
Existing  
High School  
303,100 sf

Tennis Courts  
37,800 sf

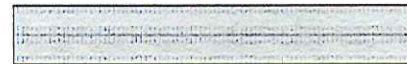
Soft Ball  
37,000 sf



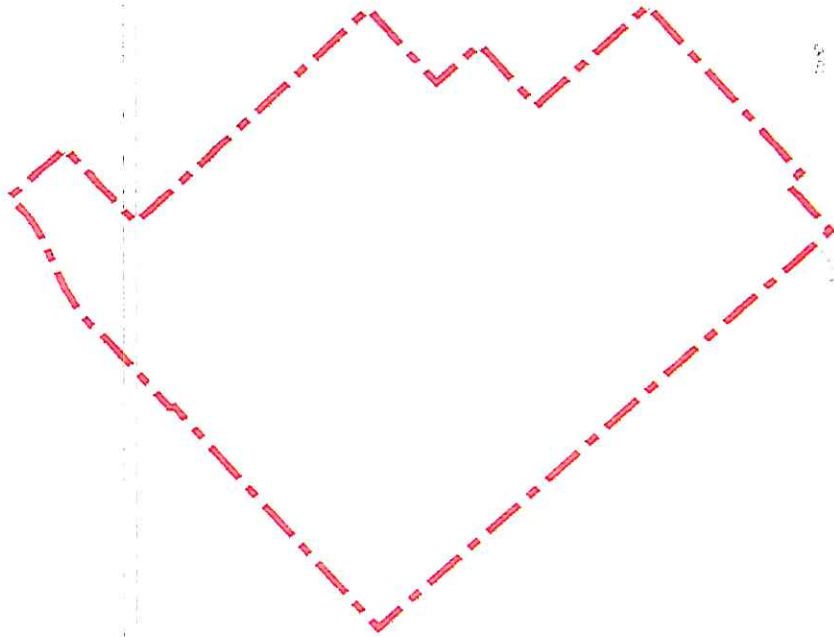
### Parking

360 Spaces  
97,200 sf

Bus Parking  
15,400 sf



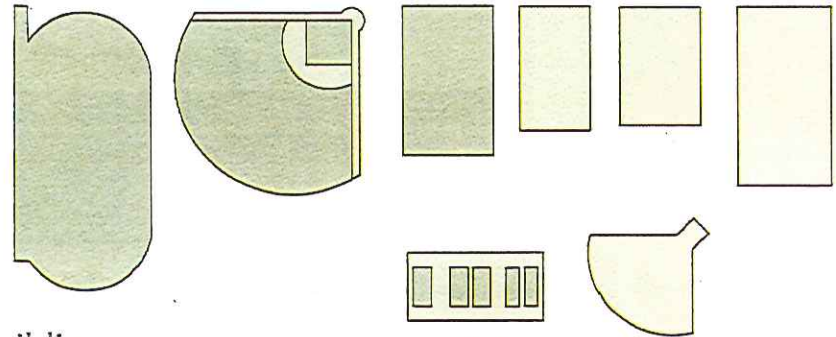
School Property  
1,059,100 sf - 24 Acres



### Community Amenities

#### Athletic Fields

|            |            |           |           |           |           |
|------------|------------|-----------|-----------|-----------|-----------|
| Track      | Base Ball  | Field     | Field     | Field     | New Field |
| 179,740 sf | 119,600 sf | 35,000 sf | 38,000 sf | 54,000 sf | 66,000 sf |



#### Building

Proposed high School  
204,000 sf

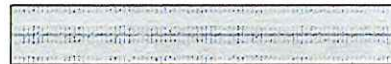
Tennis Courts  
37,800 sf

Soft Ball  
37,000 sf

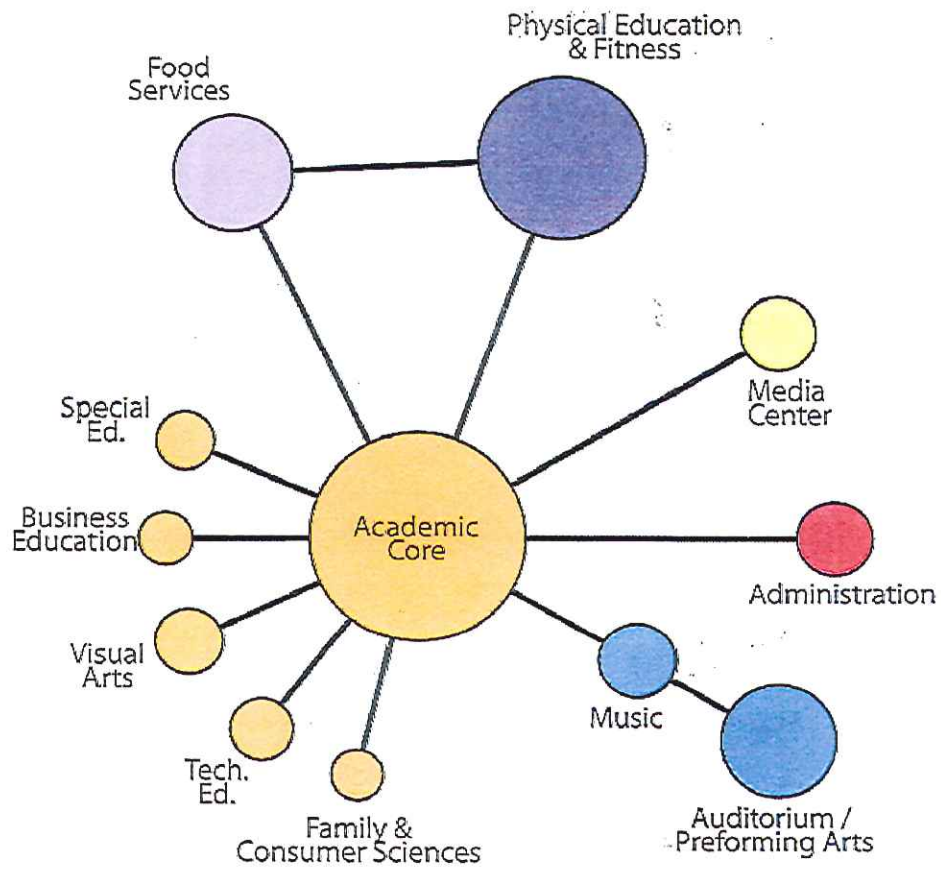


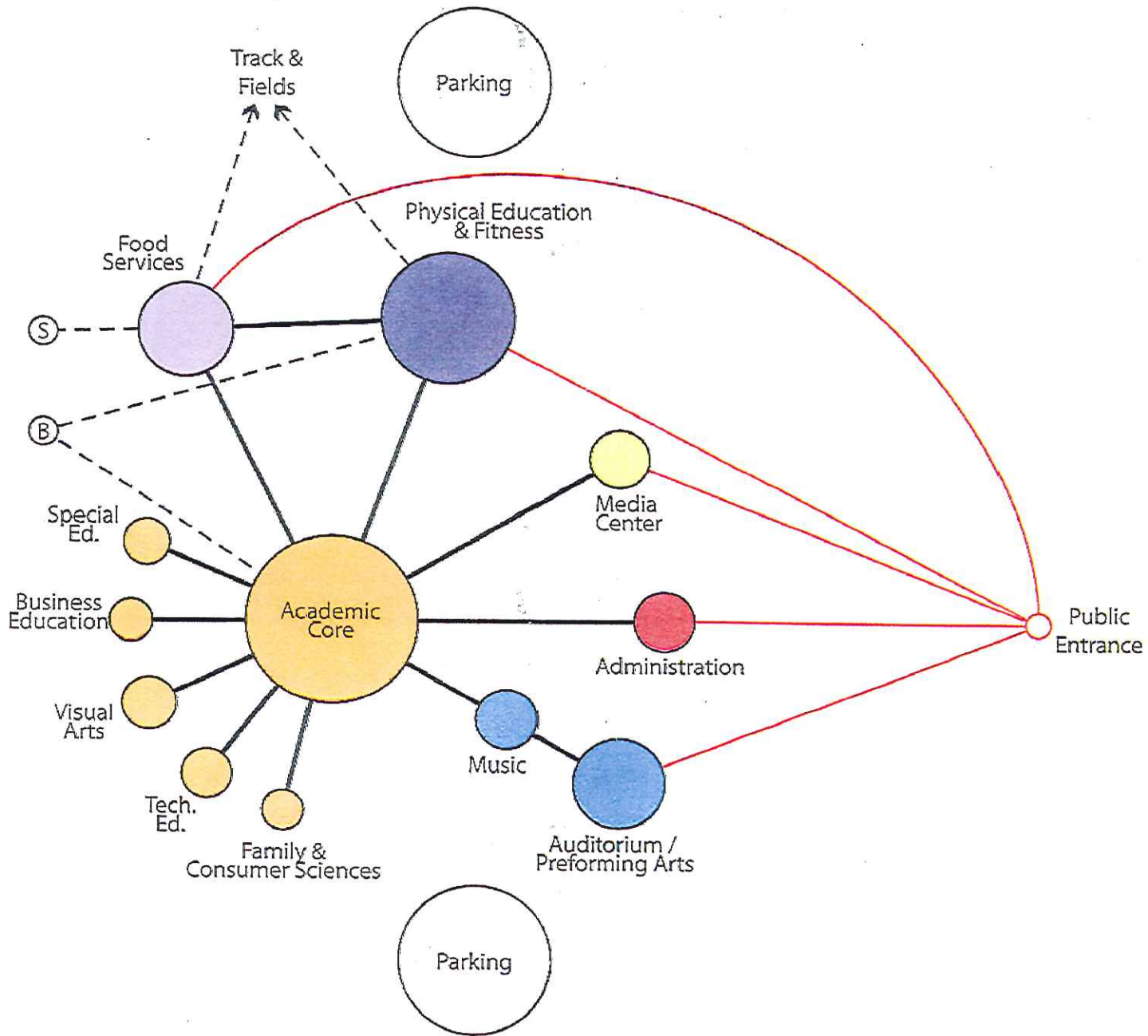
#### Parking

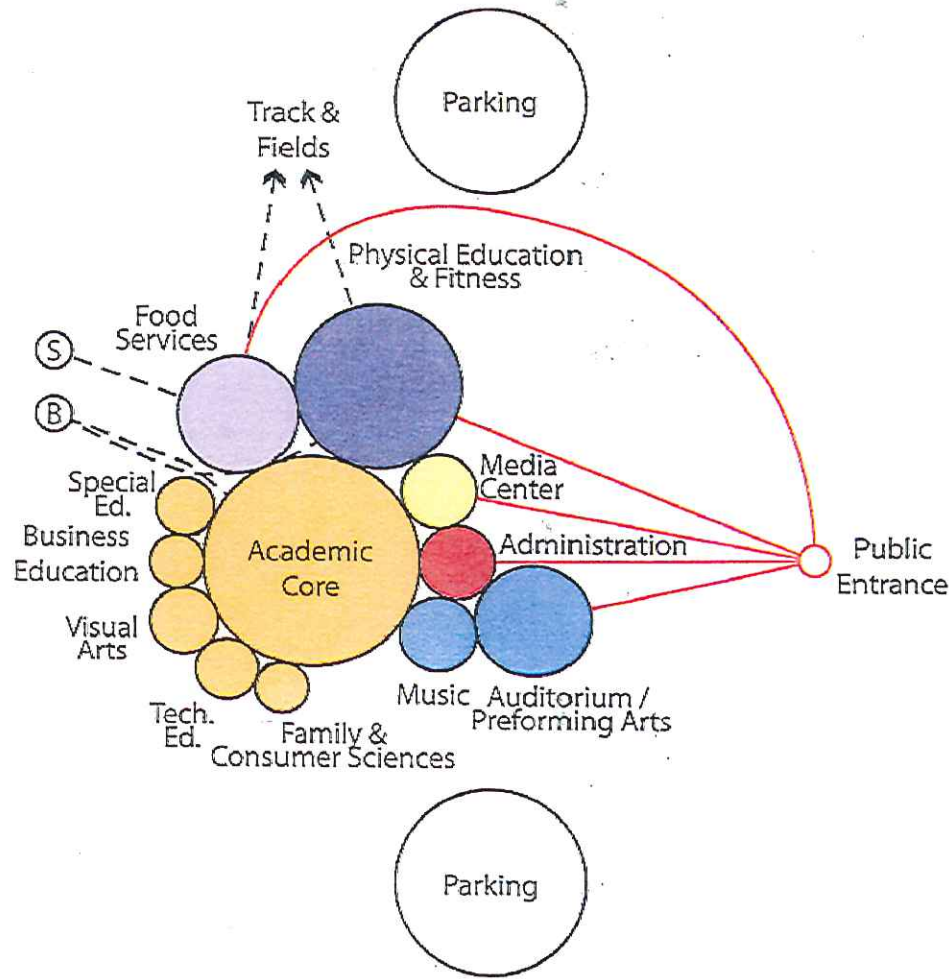
344 Spaces  
92,900 sf





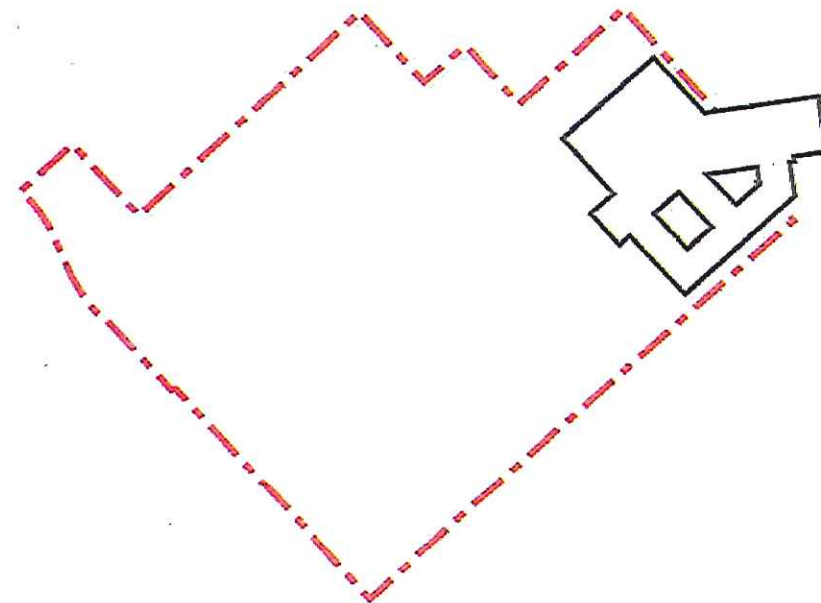
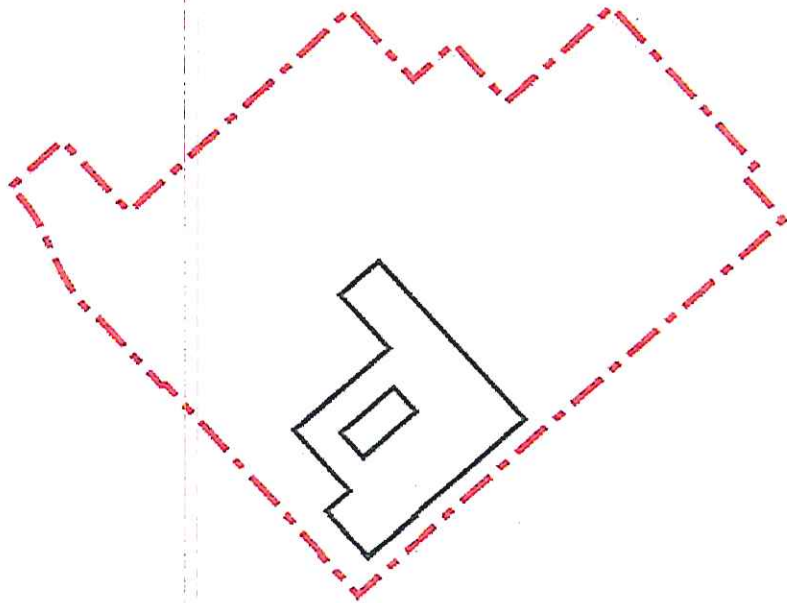
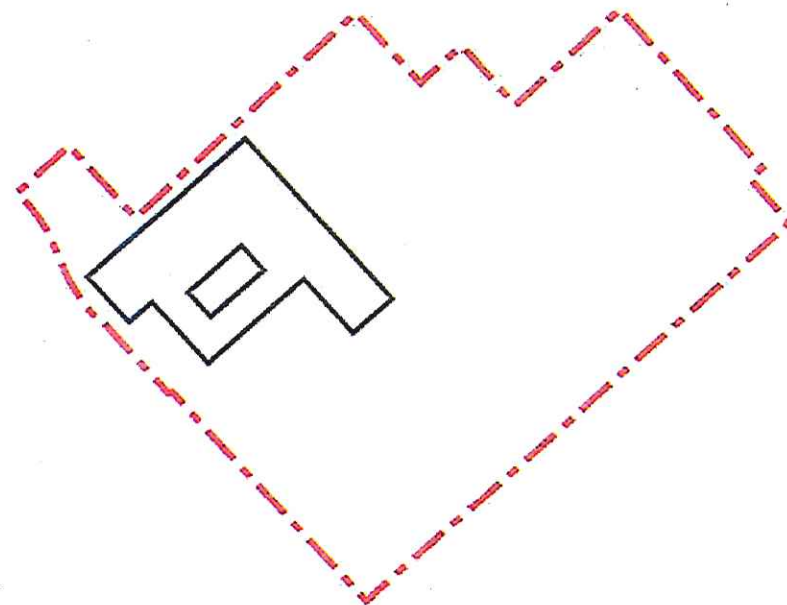
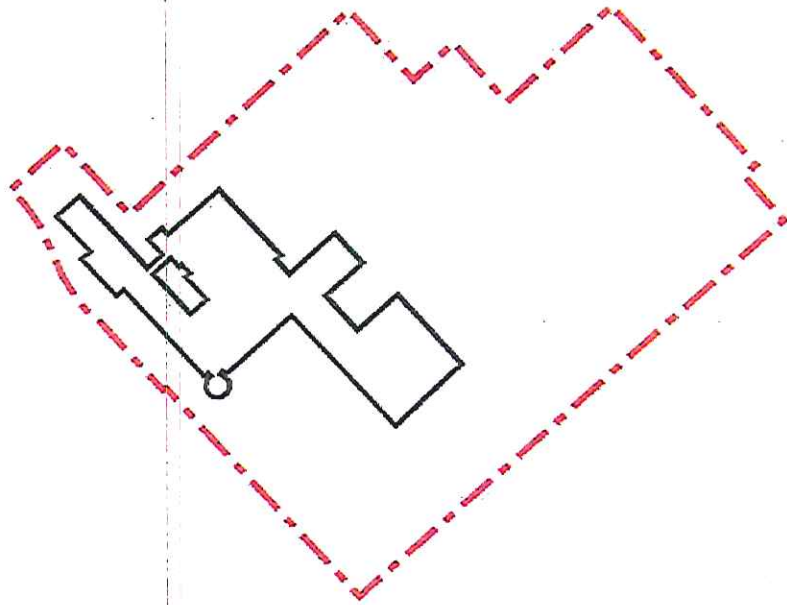






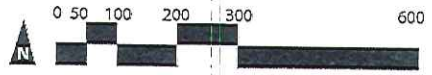


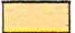
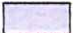
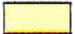



**Preliminary Site Master Plan Layout**

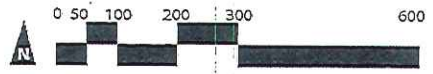
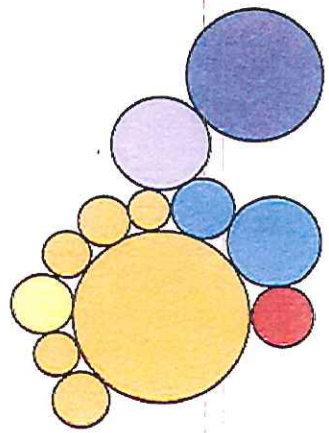












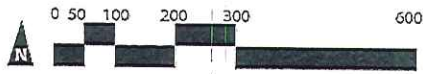
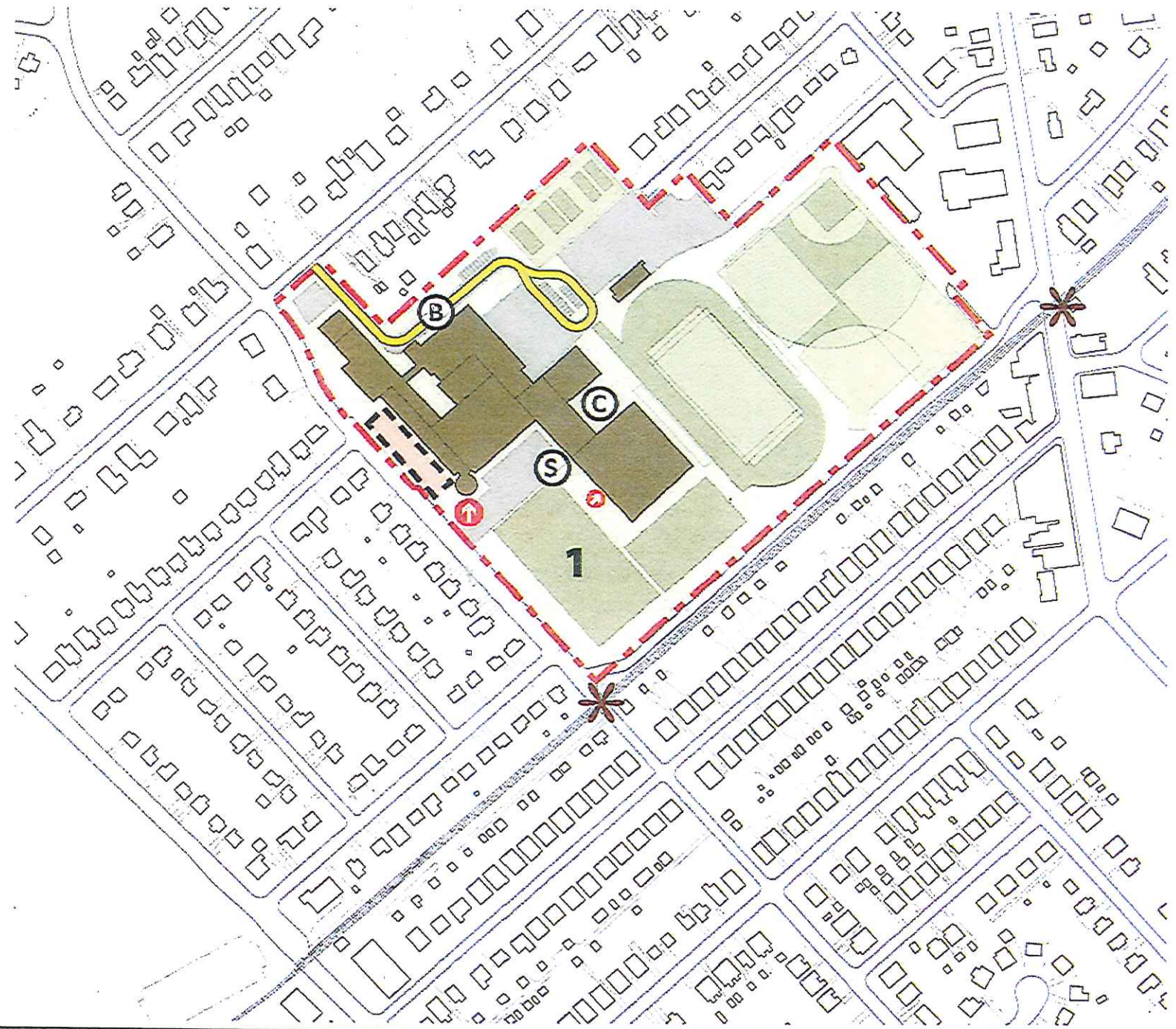
Required Bus Parking?



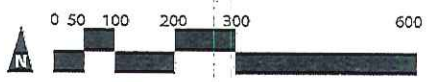
-  Academic Core
-  Food Services
-  Media Center
-  Theater & Music
-  Physical Education
-  Administration

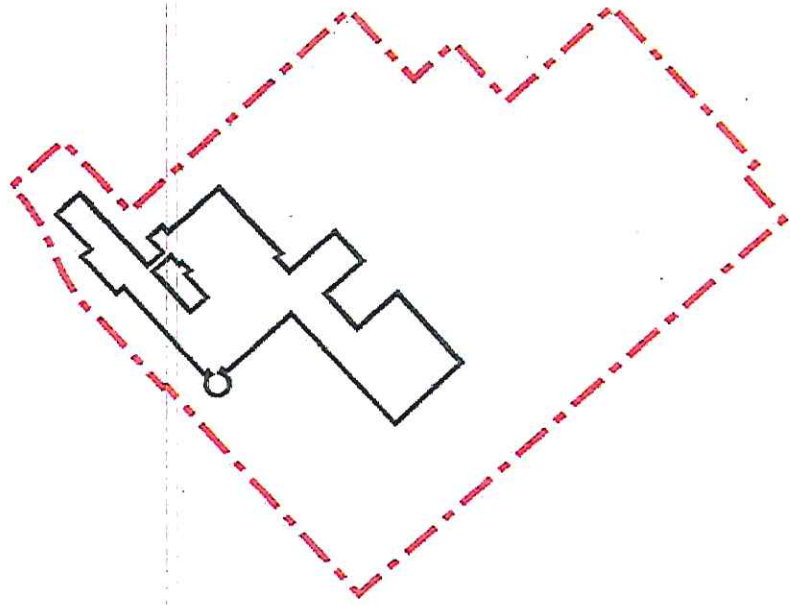


-  Public Entrances
-  Community Plaza
-  Off Campus Connections
-  Bus Route
-  Bus Drop-off
-  Service Entrance
-  Concession
-  Land Acquisition/Swap



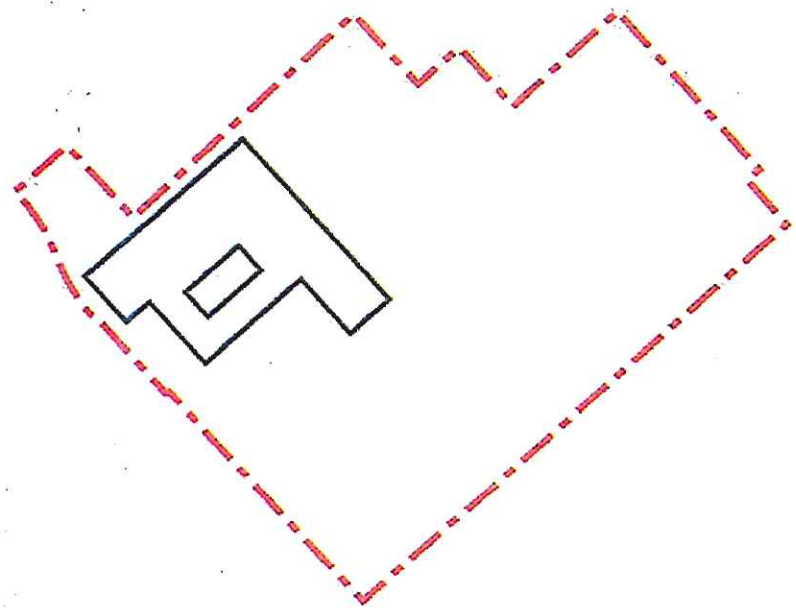






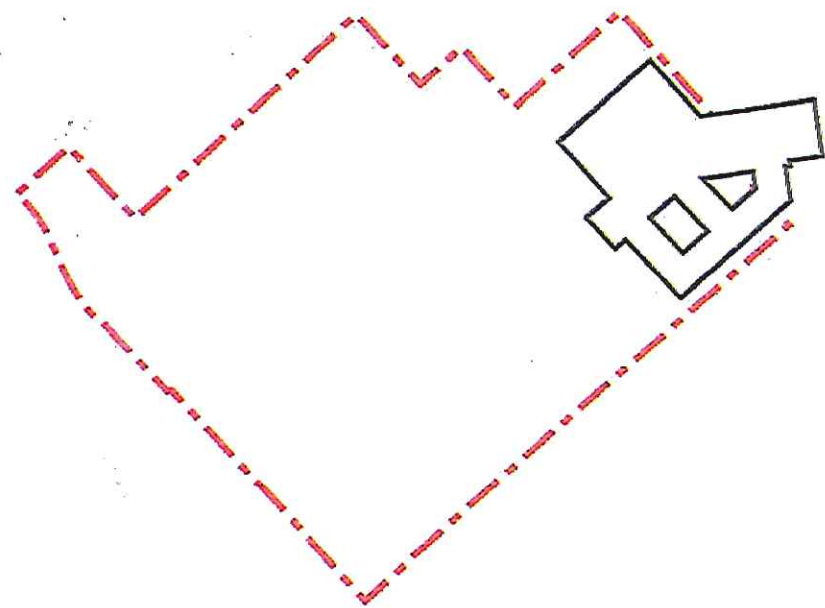
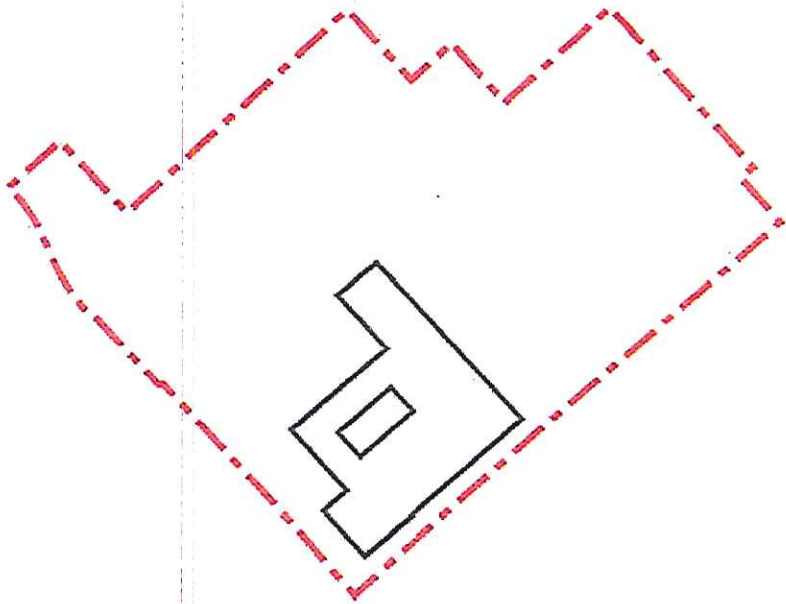
Web

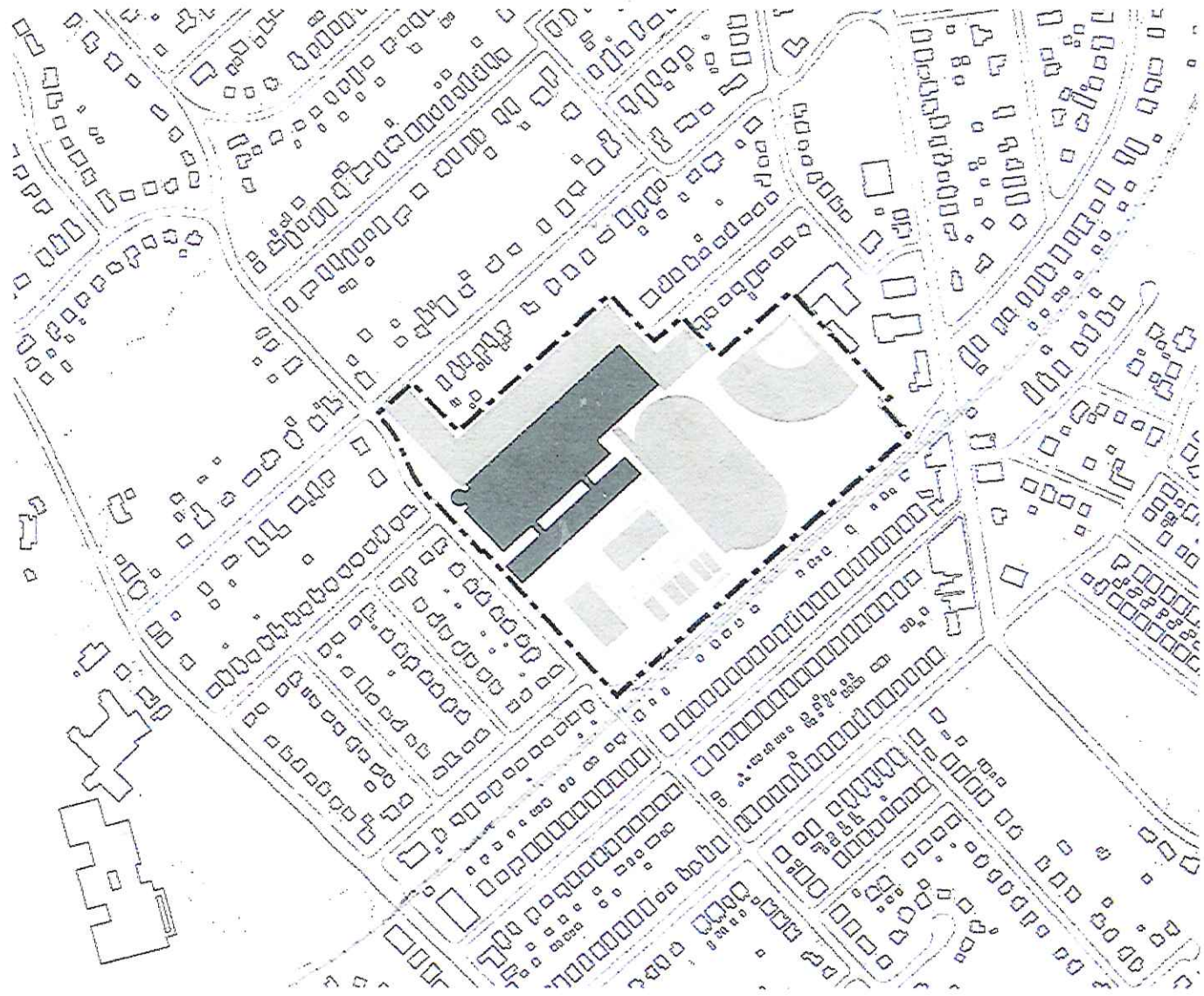
end

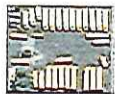


Web

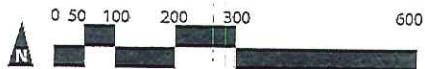
end



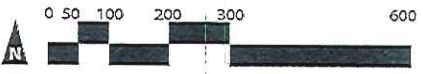
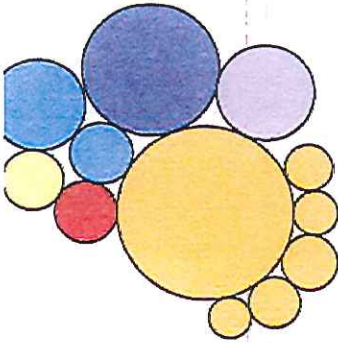
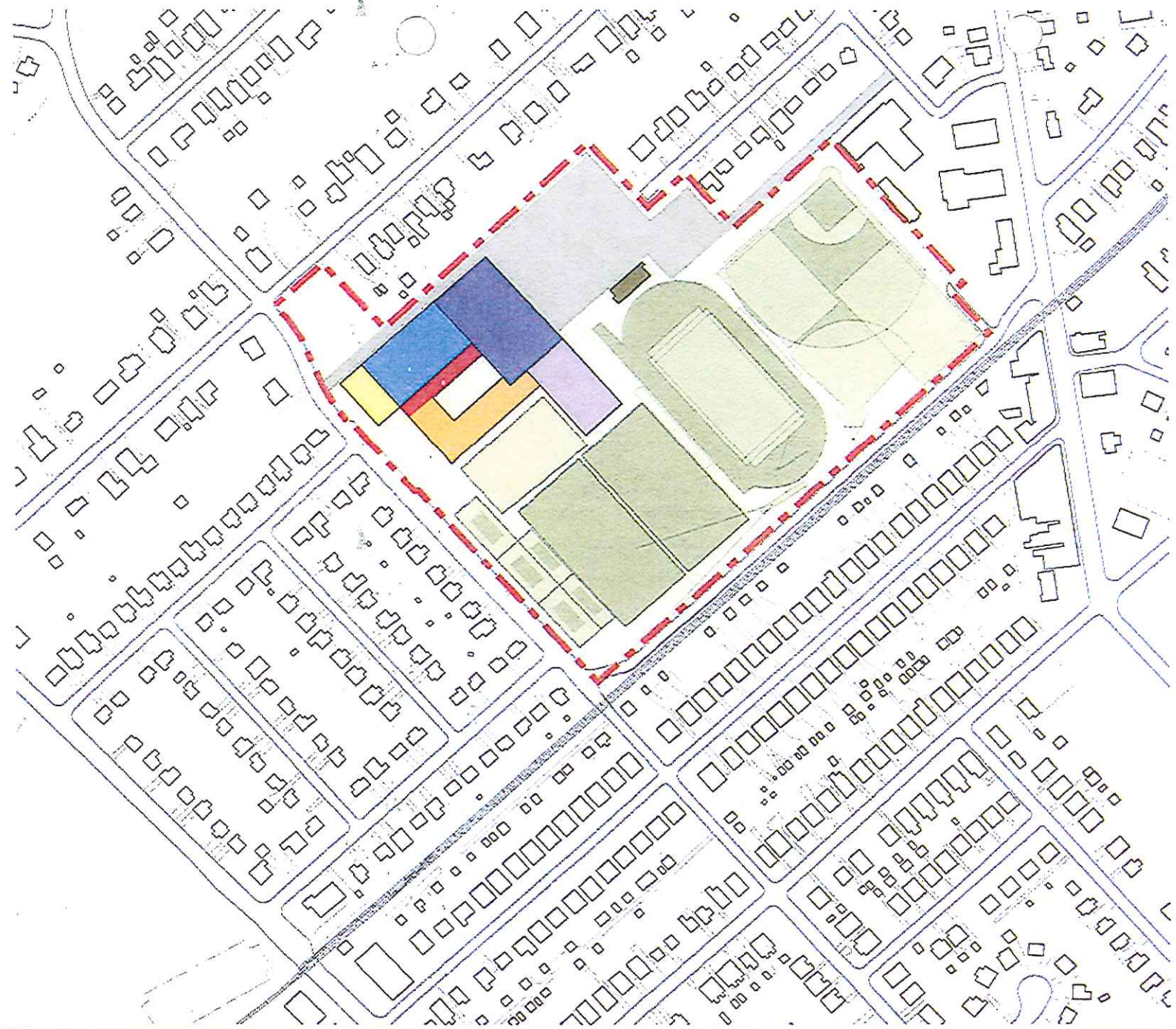












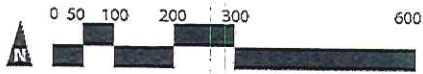
Required Bus Parking?

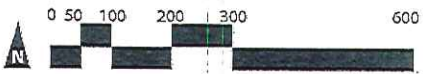


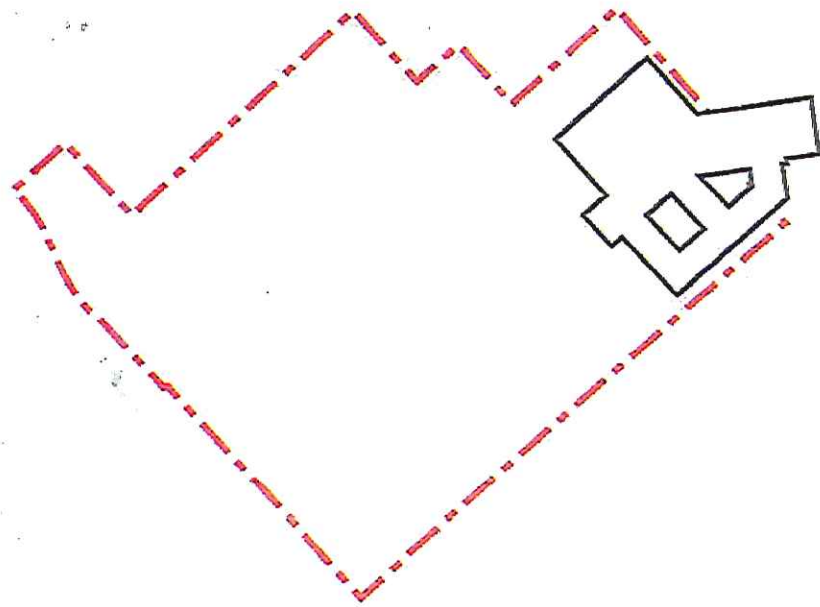
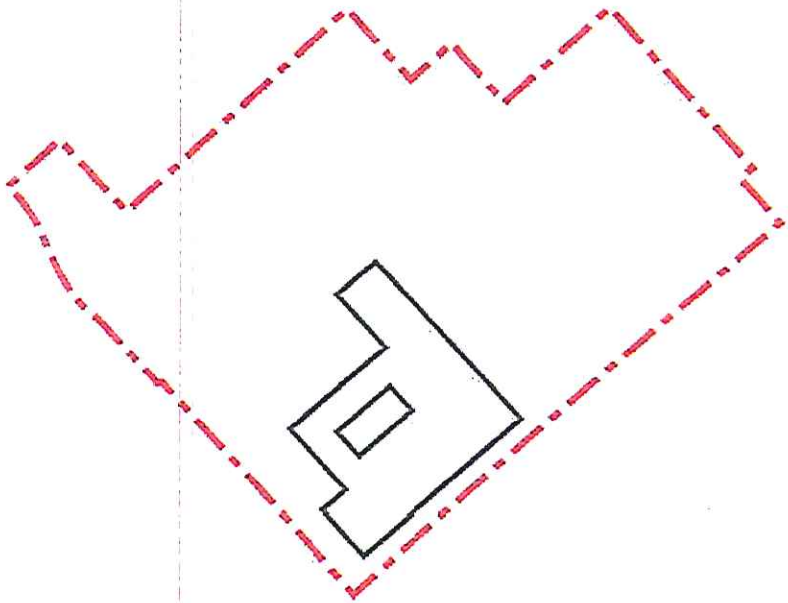
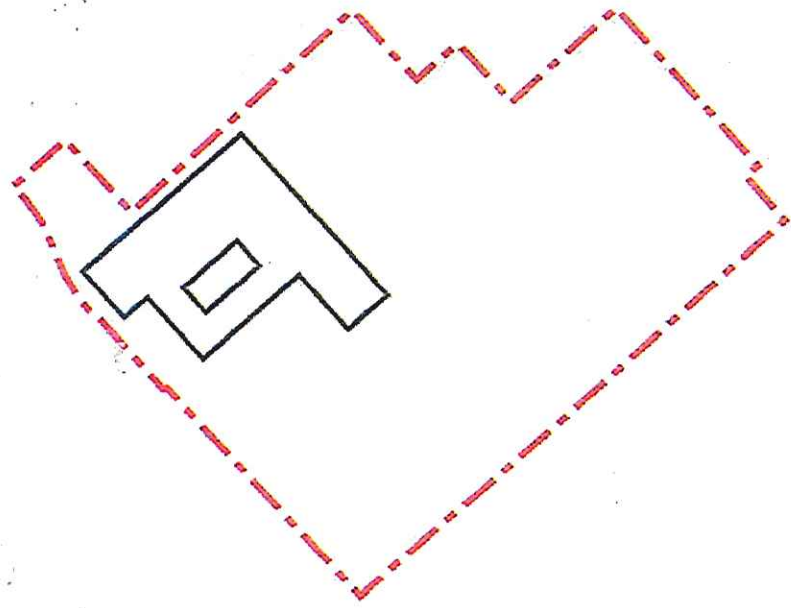
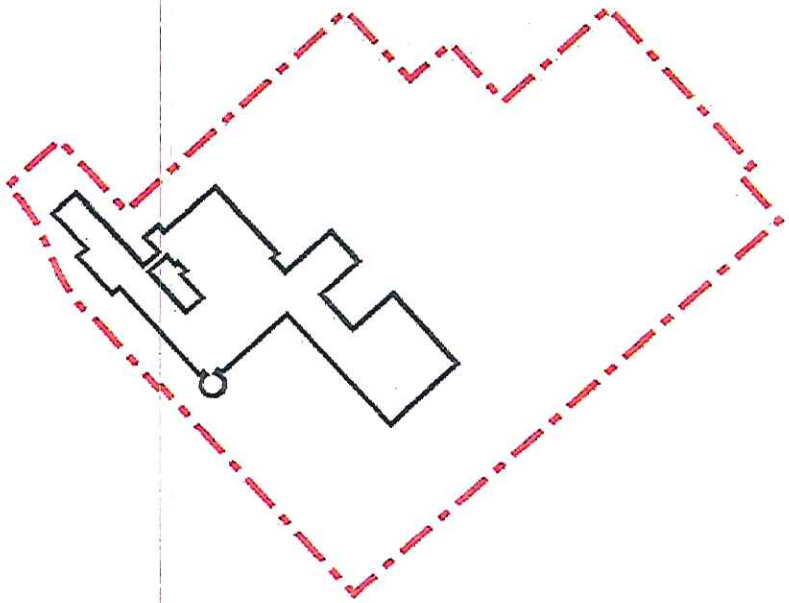
-  Academic Core
-  Food Services
-  Media Center
-  Theater & Music
-  Physical Education
-  Administration



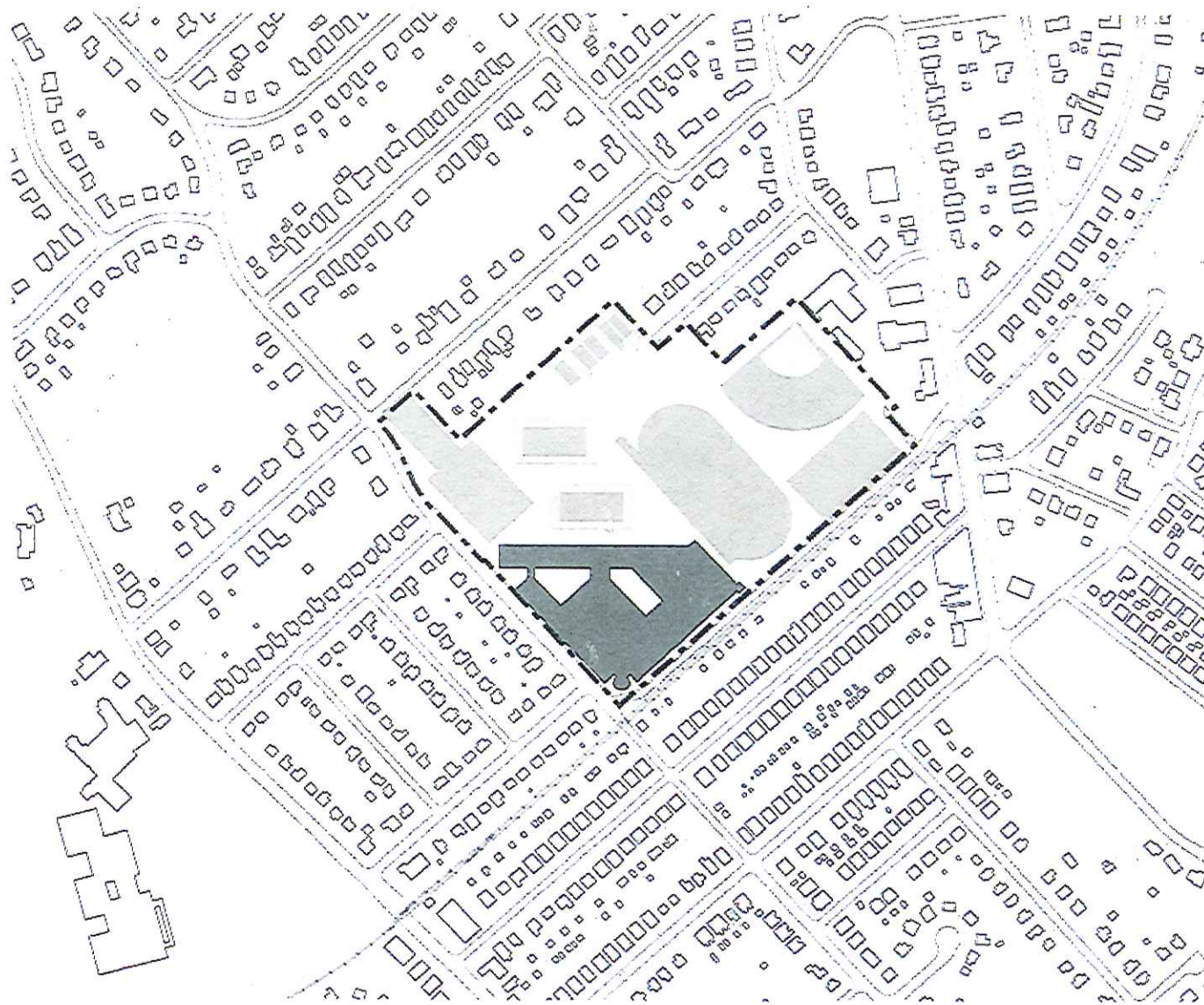
-  Public Entrances
-  Community Plaza
-  Off Campus Connections
-  Bus Route
-  Bus Drop-off
-  Service Entrance
-  Concession
-  Land Acquisition/Swap

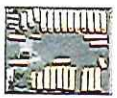




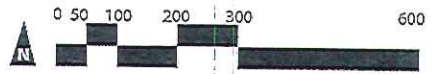




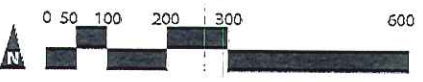
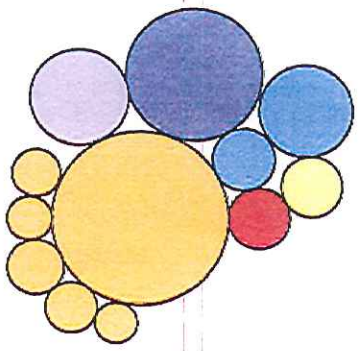
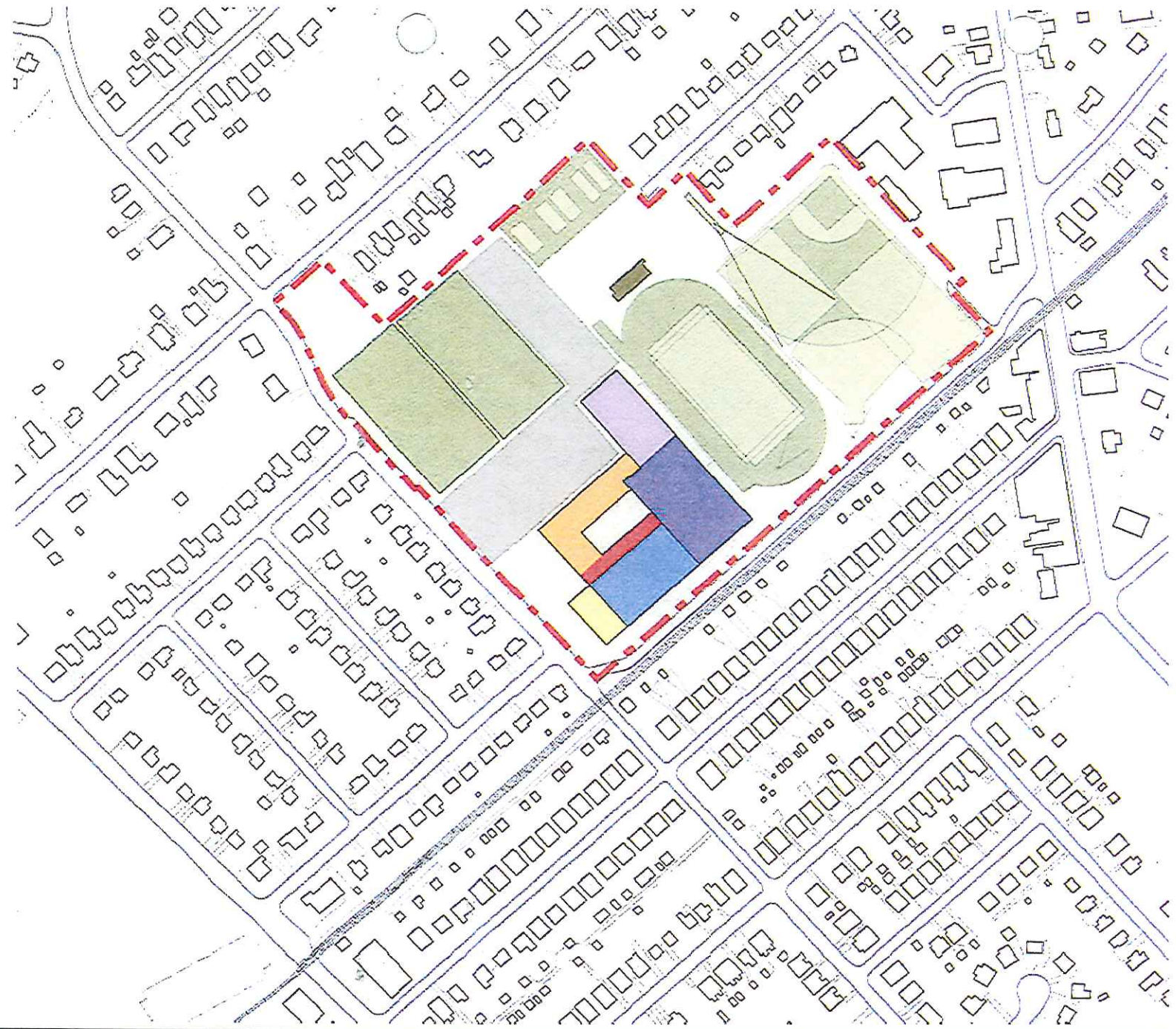












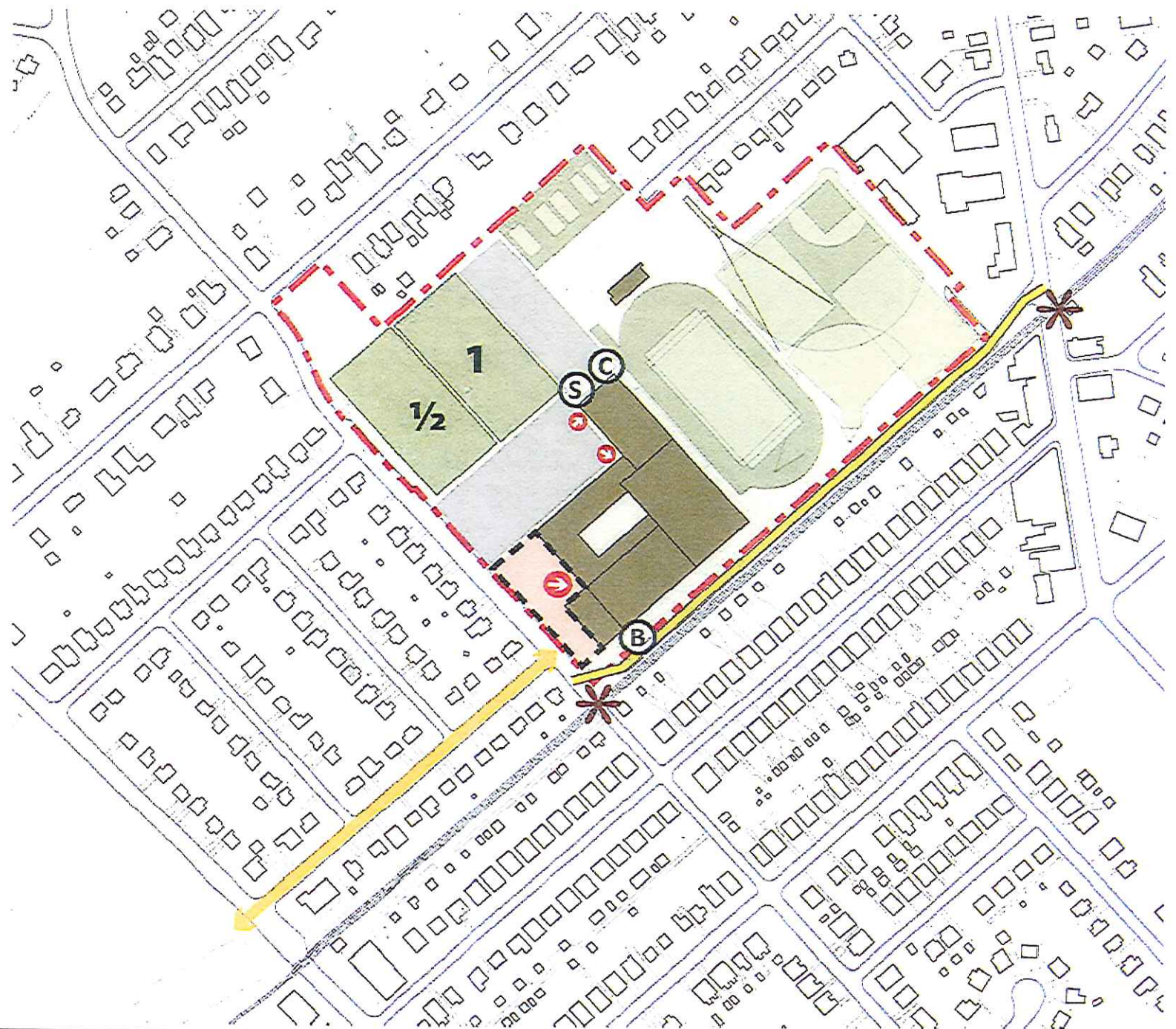
Required Bus Parking?











-  Academic Core
-  Food Services
-  Media Center
-  Theater & Music
-  Physical Education
-  Administration

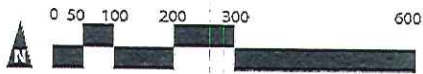


-  Public Entrances
-  Community Plaza
-  Off Campus Connections
-  Bus Route
-  Bus Drop-off
-  Service Entrance
-  Concession
-  Land Acquisition/Swap



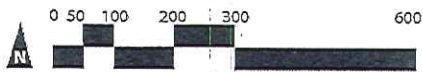


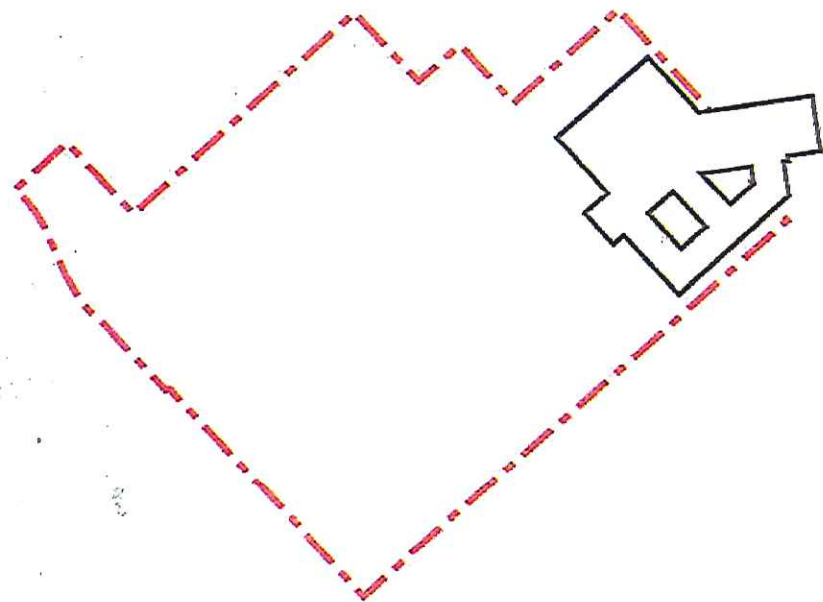
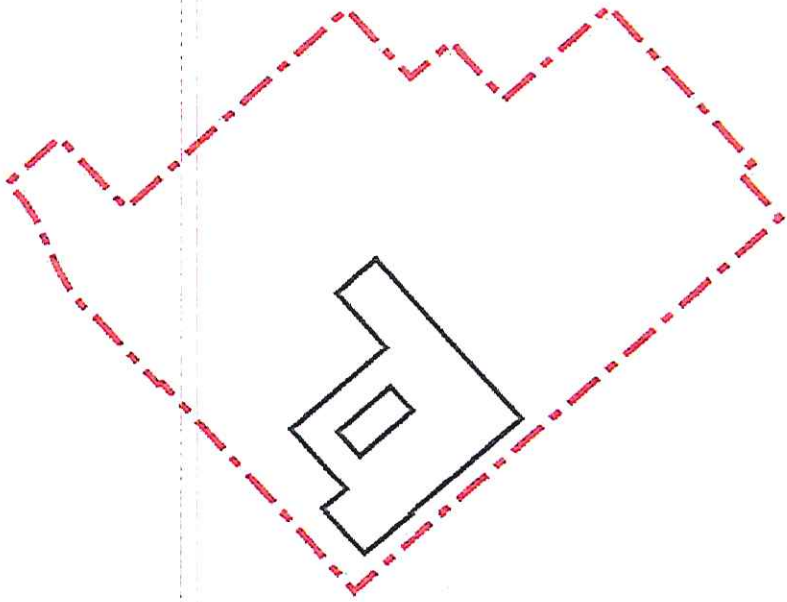
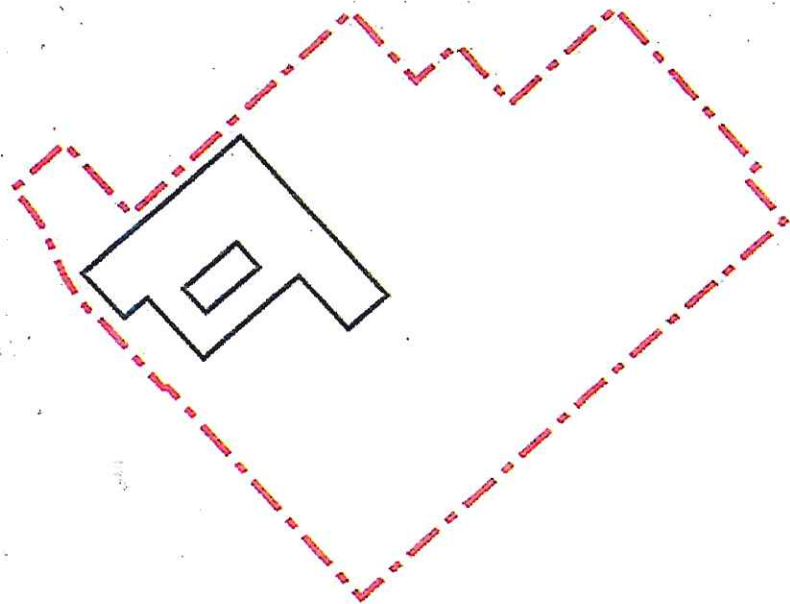
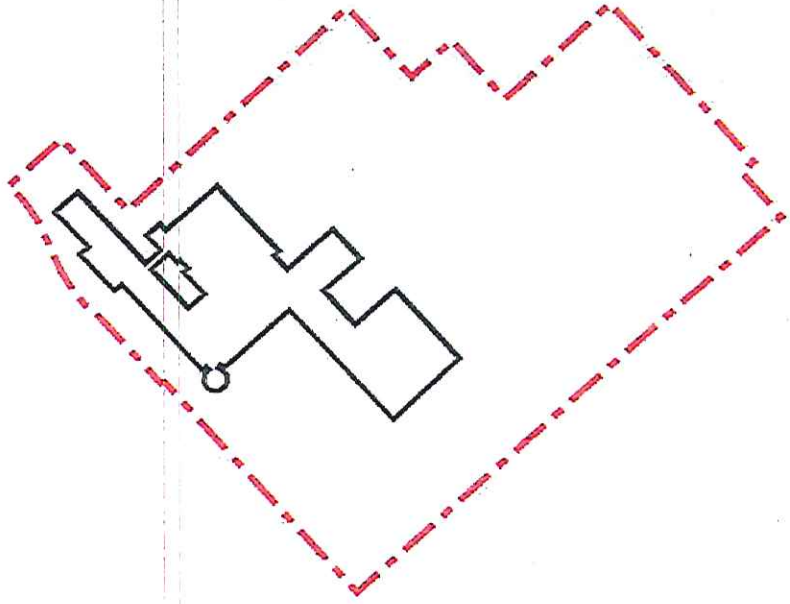
-  Public Entrances
-  Community Plaza
-  Off Campus Connections
-  Bus Route
-  Bus Drop-off
-  Service Entrance
-  Concession
-  Land Acquisition/Swap



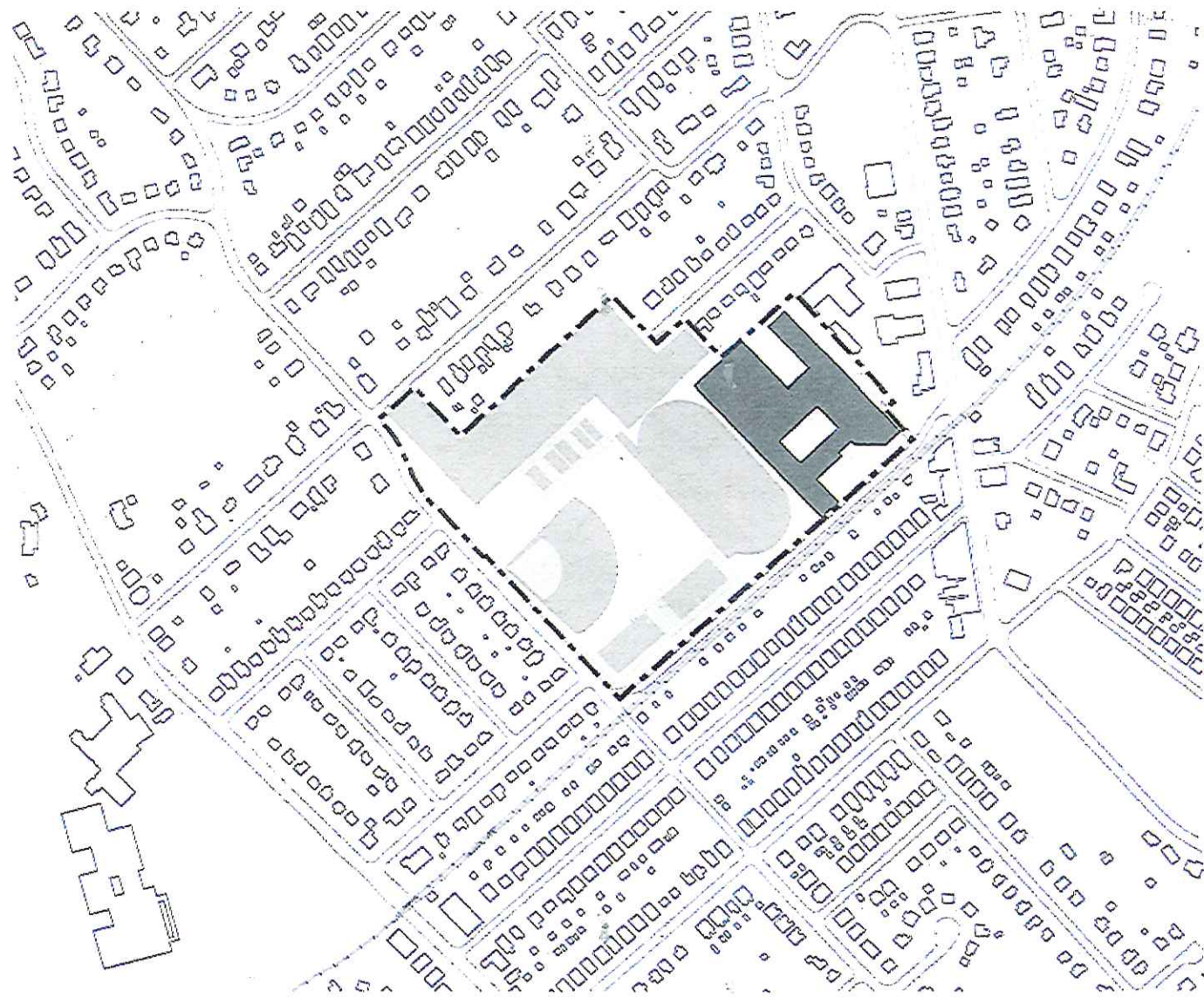


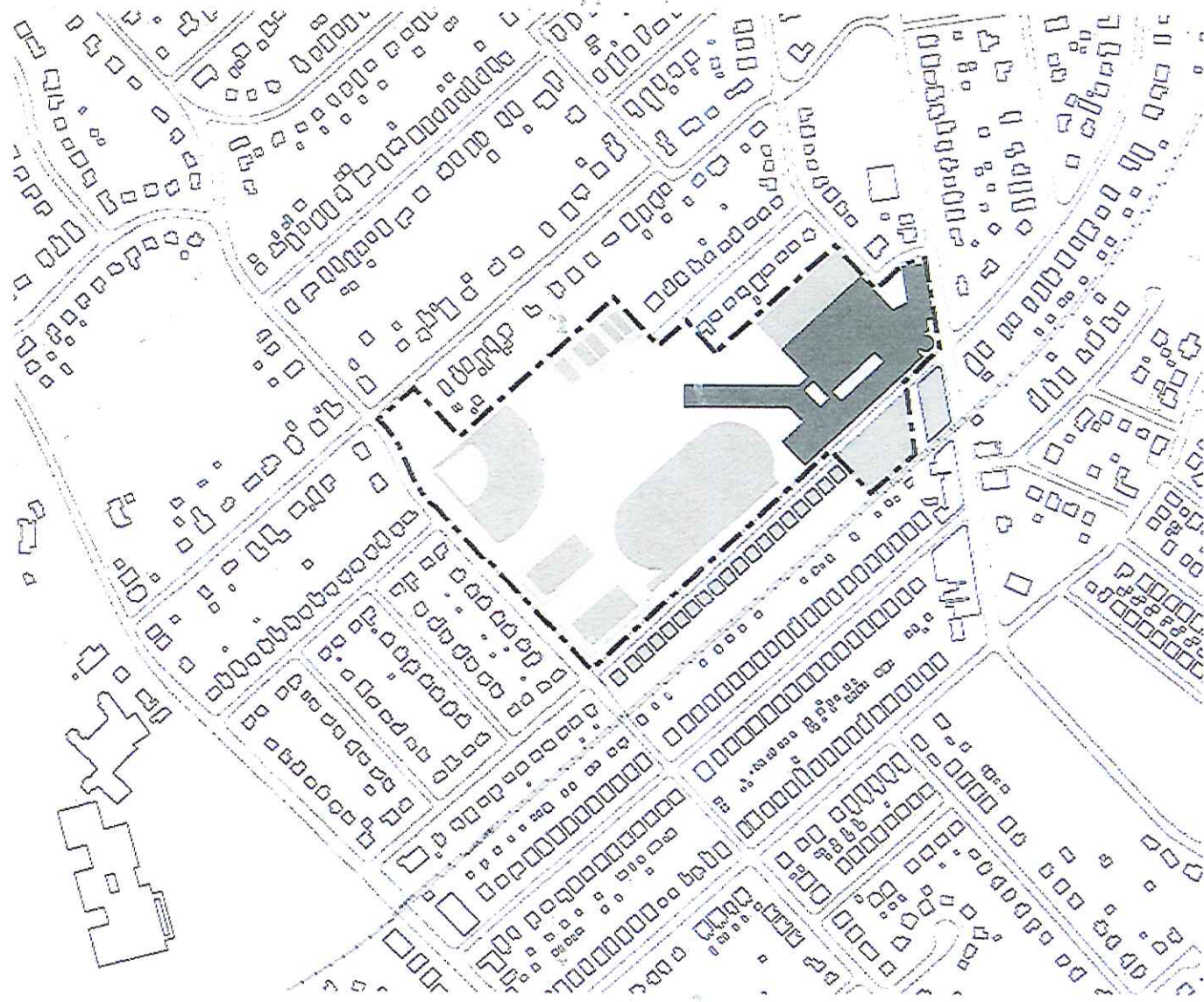
Required Bus Parking?

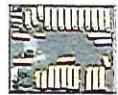




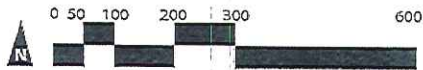




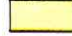





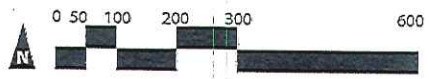
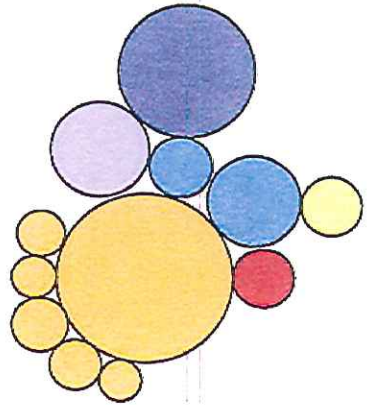












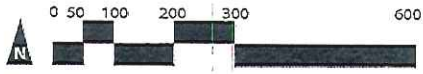
Required Bus Parking?



-  Academic Core
-  Food Services
-  Media Center
-  Theater & Music
-  Physical Education
-  Administration

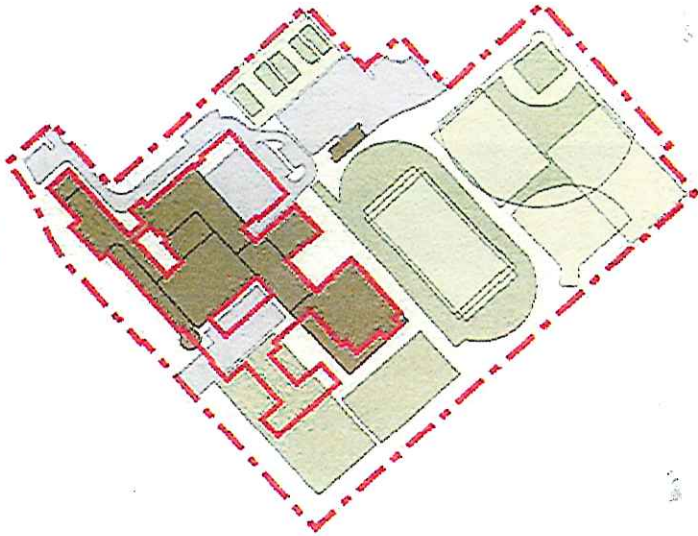


-  Public Entrances
-  Community Plaza
-  Off Campus Connections
-  Bus Route
-  Bus Drop-off
-  Service Entrance
-  Concession
-  Land Acquisition/Swap

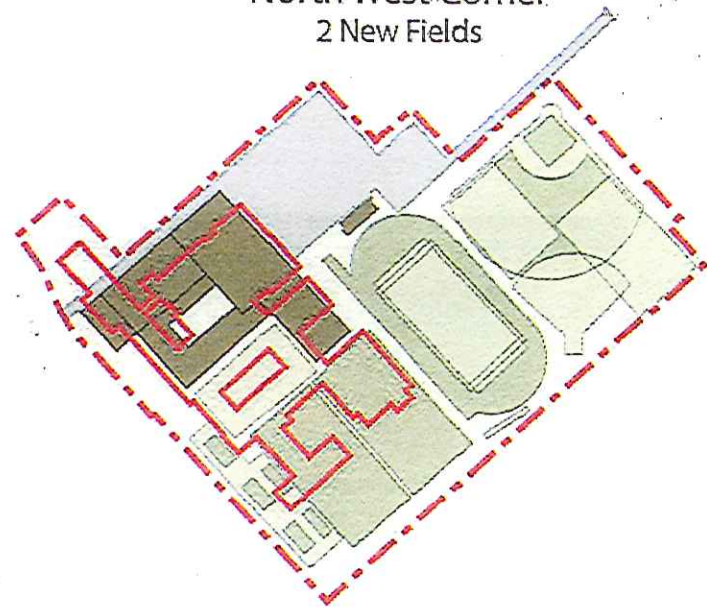




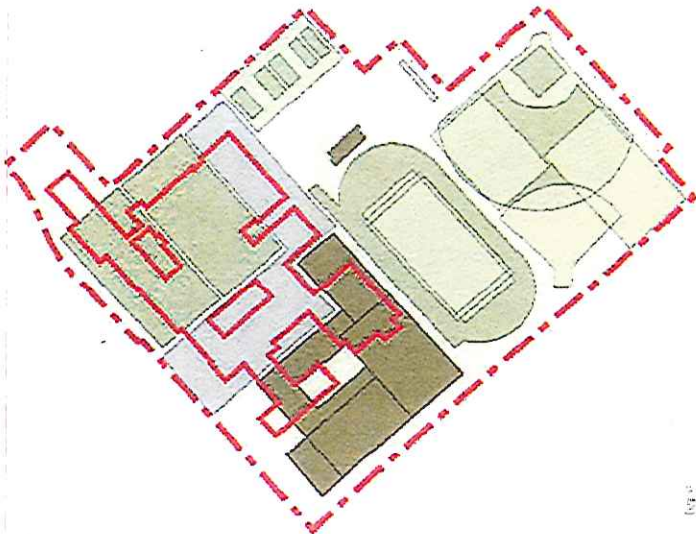
Rehabilitate Existing School  
1 New Field



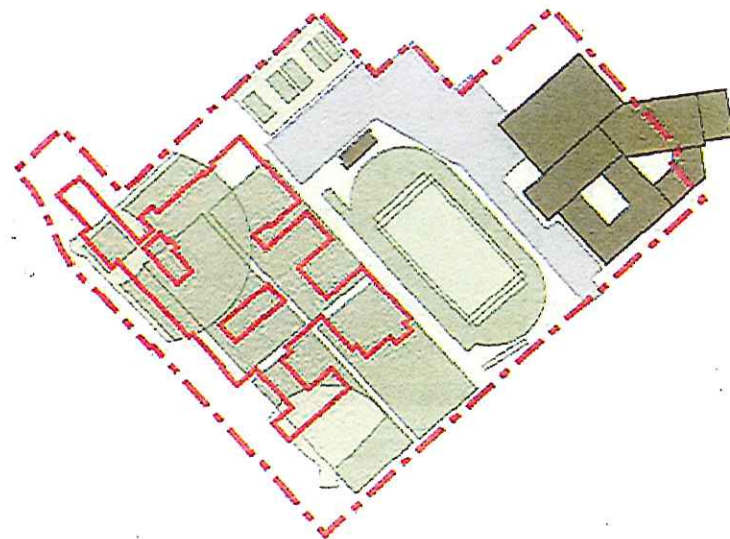
North West Corner  
2 New Fields



Leamy & Rolling  
1 1/2 (+) New Fields



Saxer Ave.  
2 New Fields

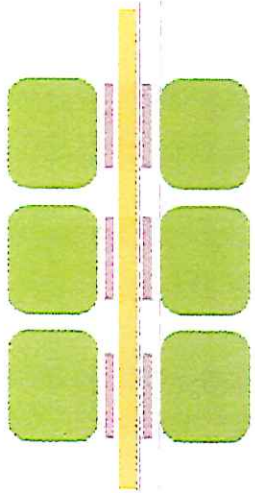




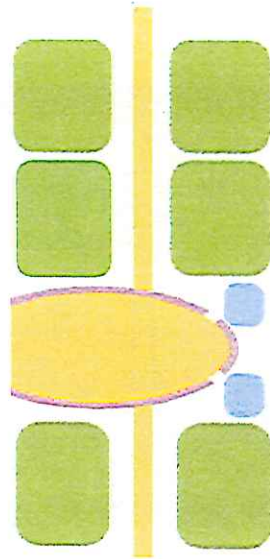
# Program and Academic Model Discussion







Traditional Classroom Layout

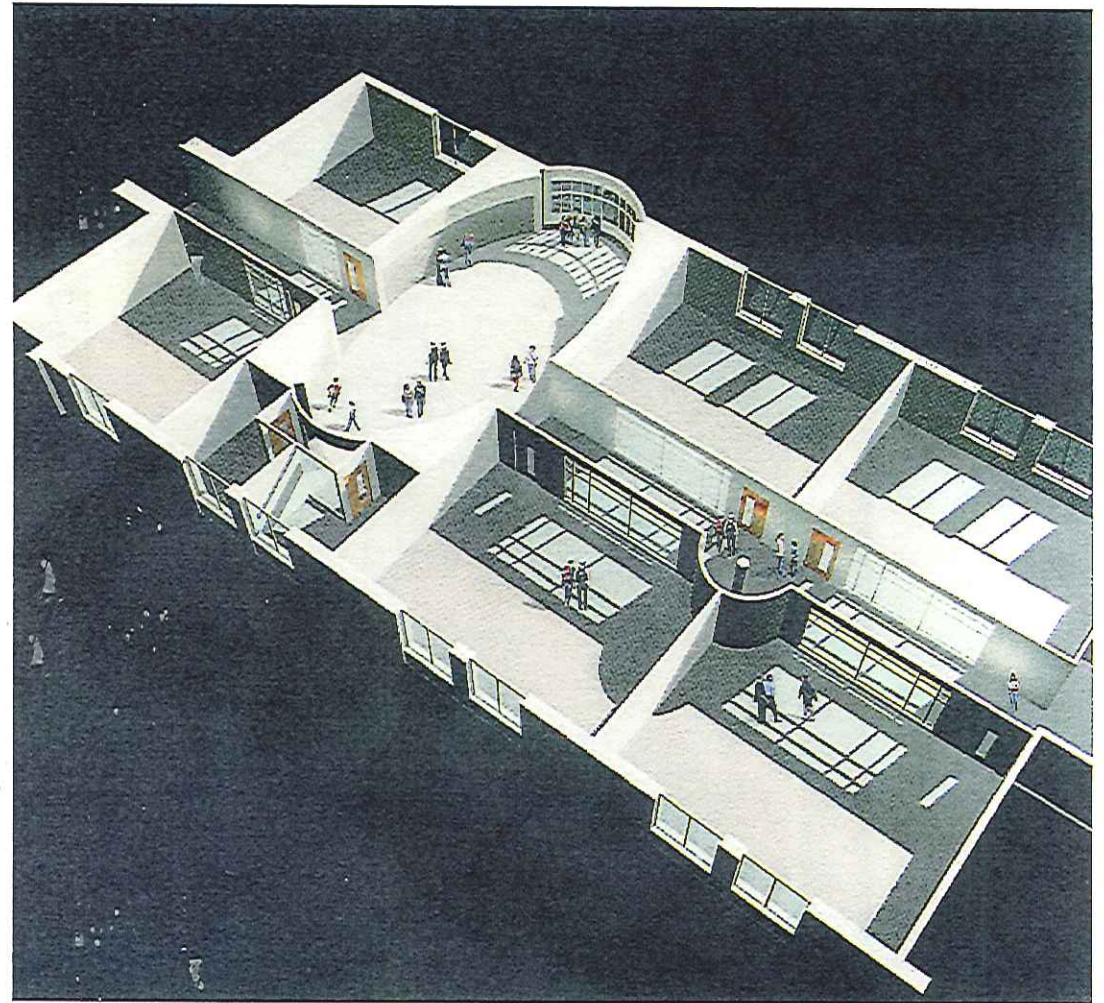


Progressive Classroom Layout



Legend

-  Classrooms
-  Lockers
-  Corridor
-  Collaborative / Teaming Space





EXISTING



POSSIBLE