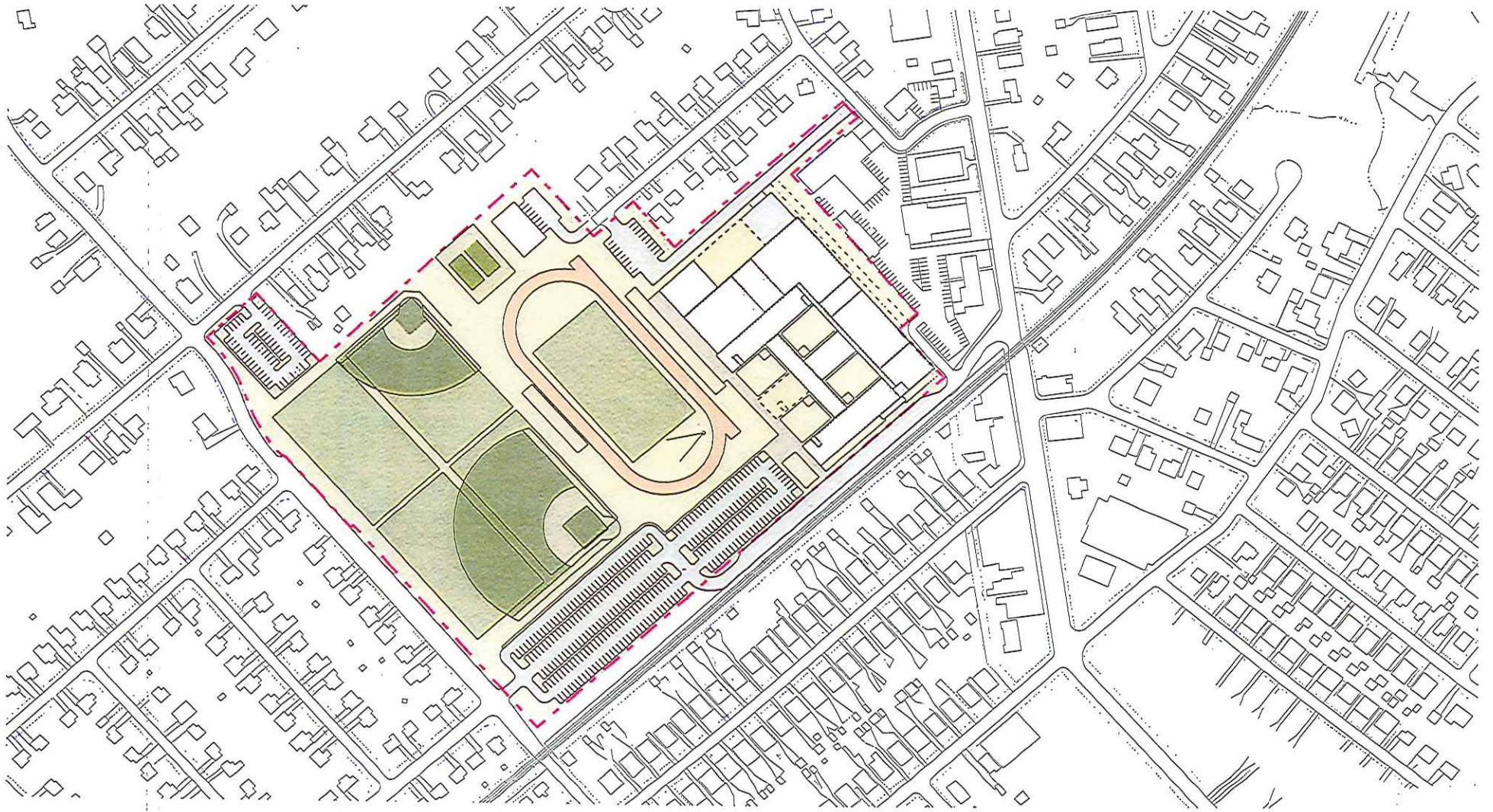


Springfield High School Master Plan



Saxer Avenue Scheme May 7, 2012



Saxer Avenue Scheme PHASE 1

Demolish Distr. Admin. Wing



Construction of New District Maintenance and Grounds Building
Restoration of Two Tennis Courts 7,000 GSF

Loading Access Maintained

Demolition of Existing Distr. Admin. Office and
Regrading to Allow for Temp. Loading 35,800 GSF on 2 Stories

- Construction Area 98,600 GSF
- Renovation Area
- Parking / Service Area
- New Construction



Saxer Avenue Scheme PHASE 2

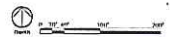
New High School Construction Start



Construct New High School 224,700 GSF

Temporary Parking Area

- Construction Area 238,700 GSF
- New Construction
- Parking / Service Area



Saxer Avenue Scheme PHASE 3

New High School Construction Completion

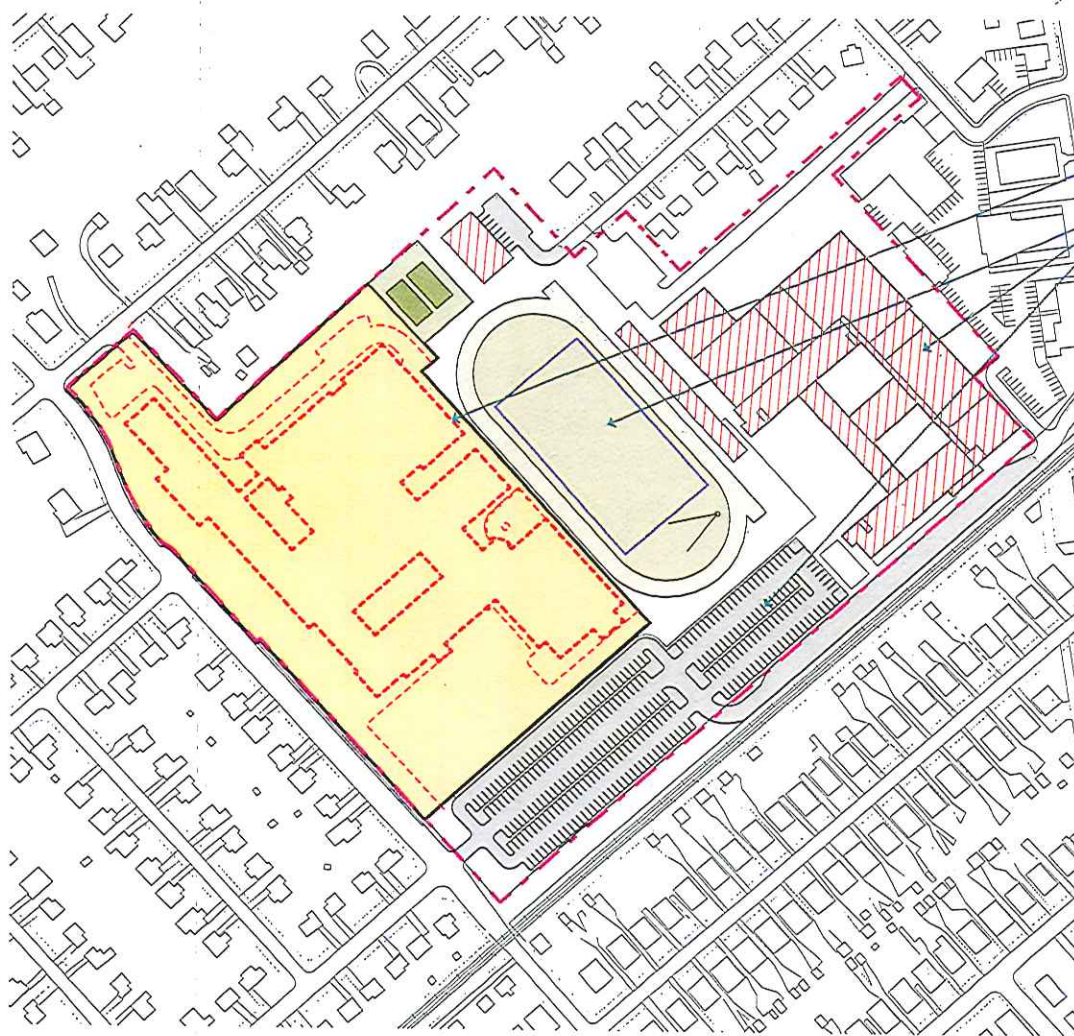


- Maintain Access for Maintenance Building
- New Bleachers Storage Below Seating 8,900 GSF
- New Track & Field and Wellfield
- High School Construction Ongoing 224,700 GSF
- Temporary Parking and Loading Dock Access
- New Parking Lot Construction
- New Curbcut/Entry to Site
- Rolling Road Closed

- Construction Area 650,000 GSF
- New Construction
- Parking / Service Area

Saxer Avenue Scheme PHASE 4

Demos of Existing High School



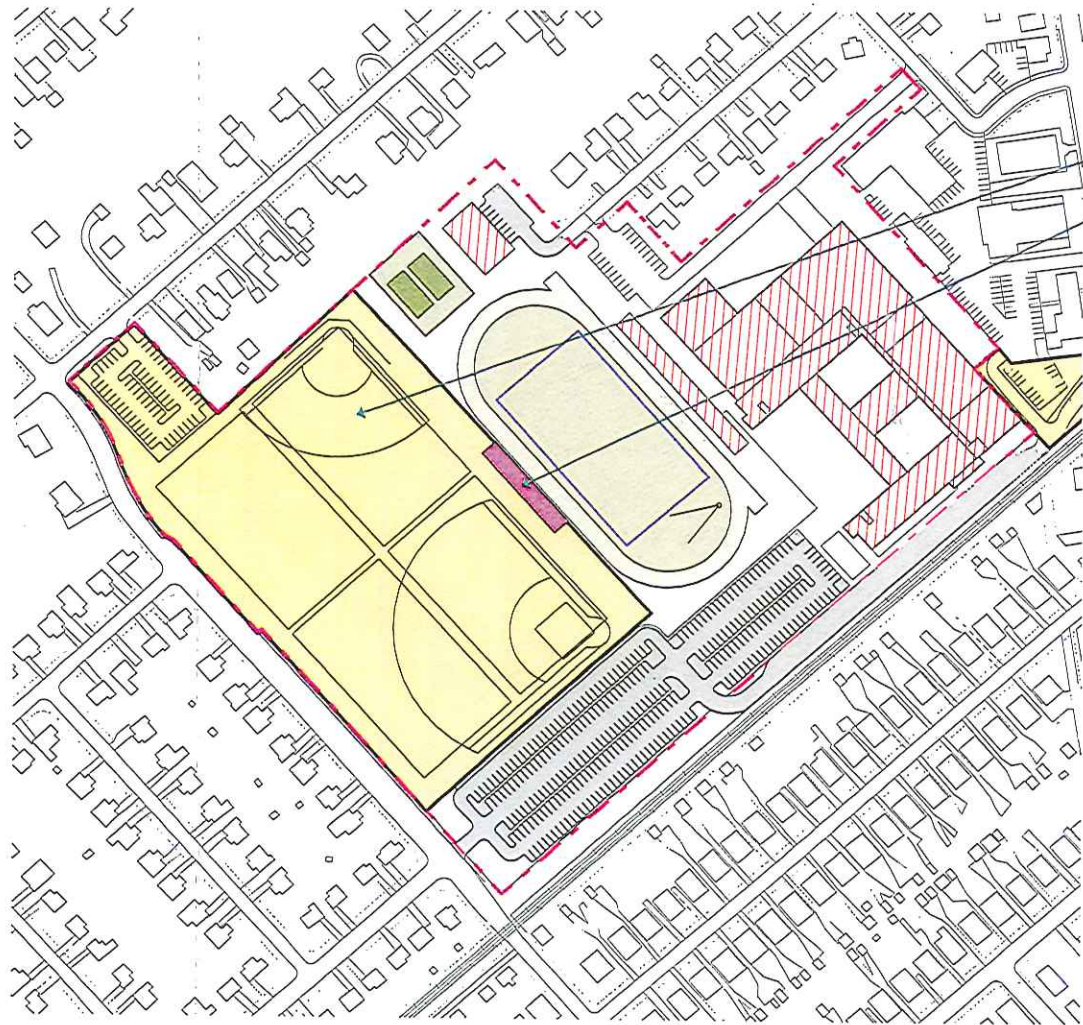
Demolition of Existing High School 251,800 GSF

New High School, Field and Parking in Operation

- Construction Area 415,200 GSF
- Renovation Area
- Renovation Completed
- Parking / Service Area

Saxer Avenue Scheme PHASE 5

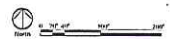
Final Site Improvements



Final Site Improvements

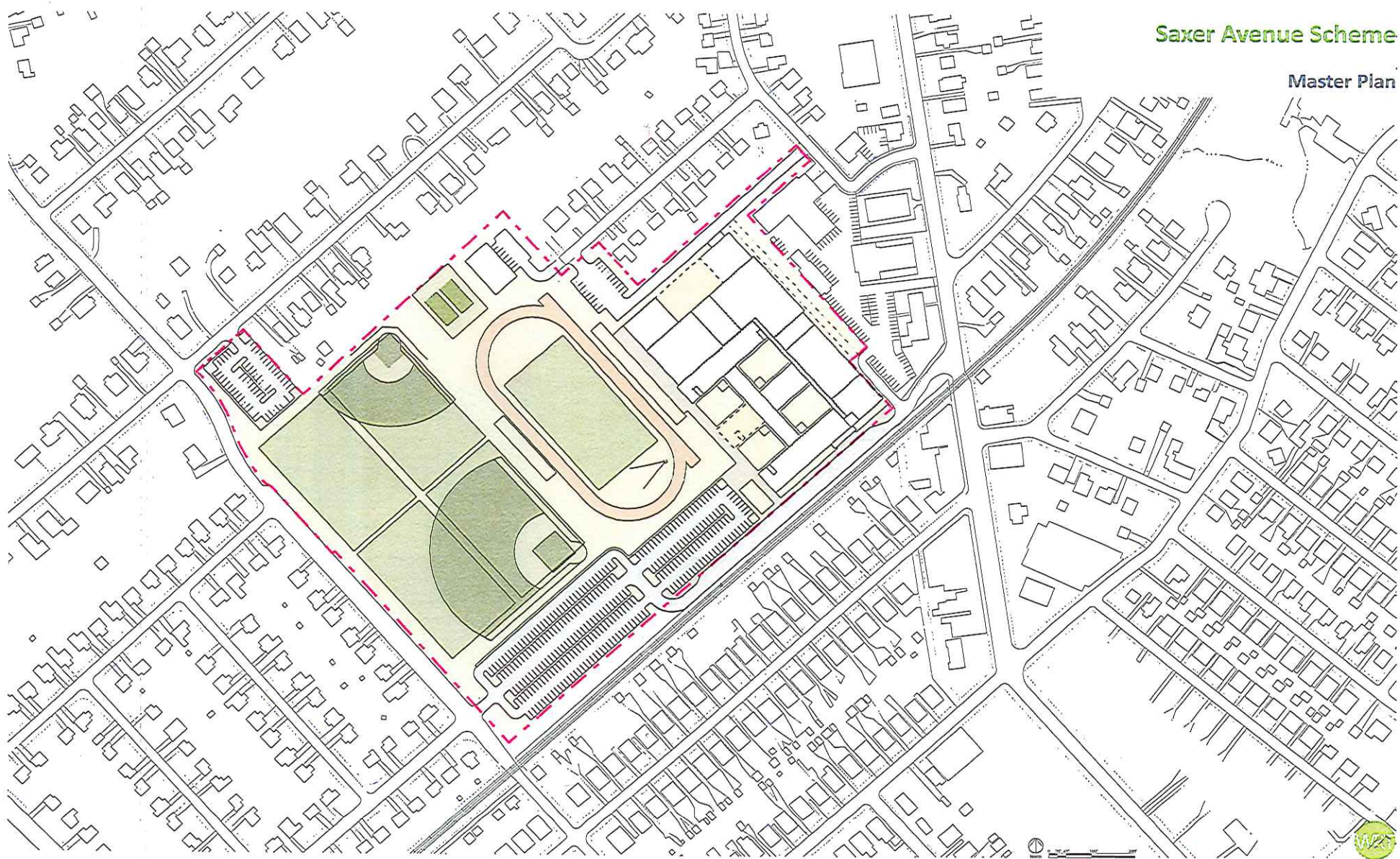
New Visitors Bleachers 5,500 GSF

- Construction Area 446,600 GSF
- New Construction
- Renovation Completed
- Parking / Service Area



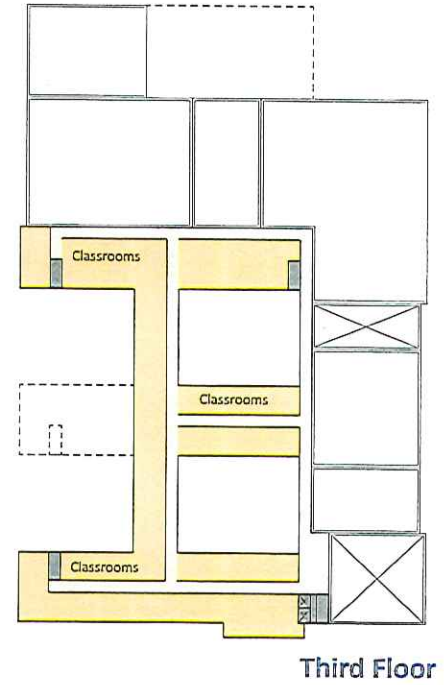
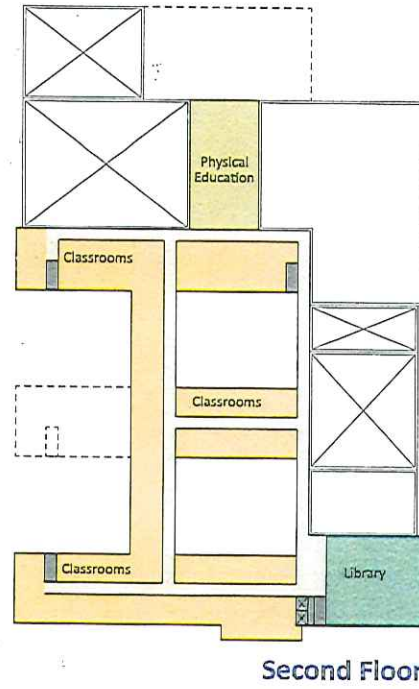
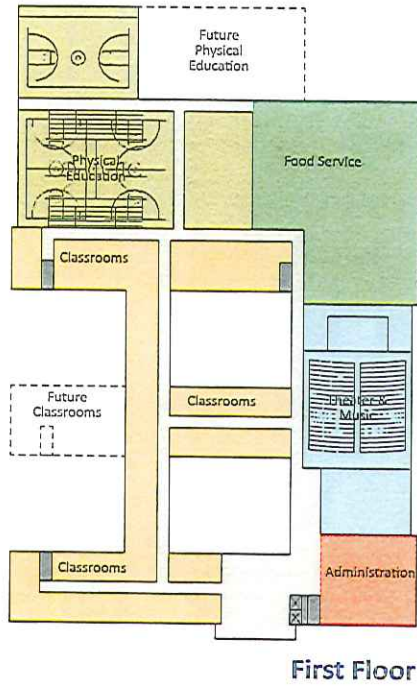
Saxer Avenue Scheme

Master Plan



Saxer Avenue Scheme

Floor Plans



- Classrooms
- Theater & Music
- Physical Education
- Food Service
- Administration
- Library
- Corridors
- Stairs / Elevators
- Future Building

