

Springfield High School

Springfield School District
Delaware County - Pennsylvania

Master Plan Presentation

Town Hall Meeting 2

Right-Sizing / Existing Building / Education Model

November 13th, 2014

117

Town Hall Meetings

- **Town Hall Meeting 1 (October 16th, 2014)**
Repeat Presentation of May 22, 2014 Board Meeting
- **Town Hall Meeting 2 (November 13th, 2014)**
Existing Building / Right-Sizing / Education Model
- **Town Hall Meeting 3 (December 11th, 2014)**
Phasing / Traffic and Parking
- **Town Hall Meeting 4 (January 14th, 2015)**
Community/ Academic / Athletics and Recreation / Sustainability
- **Town Hall Meeting 5 (February 4th, 2015)**
Financial Options / Cost Options / Tax Impact
- **Town Hall Meeting 6 (March 19th, 2015)**
Recap / Summary / Options for Moving Forward

Town Hall Meeting 2

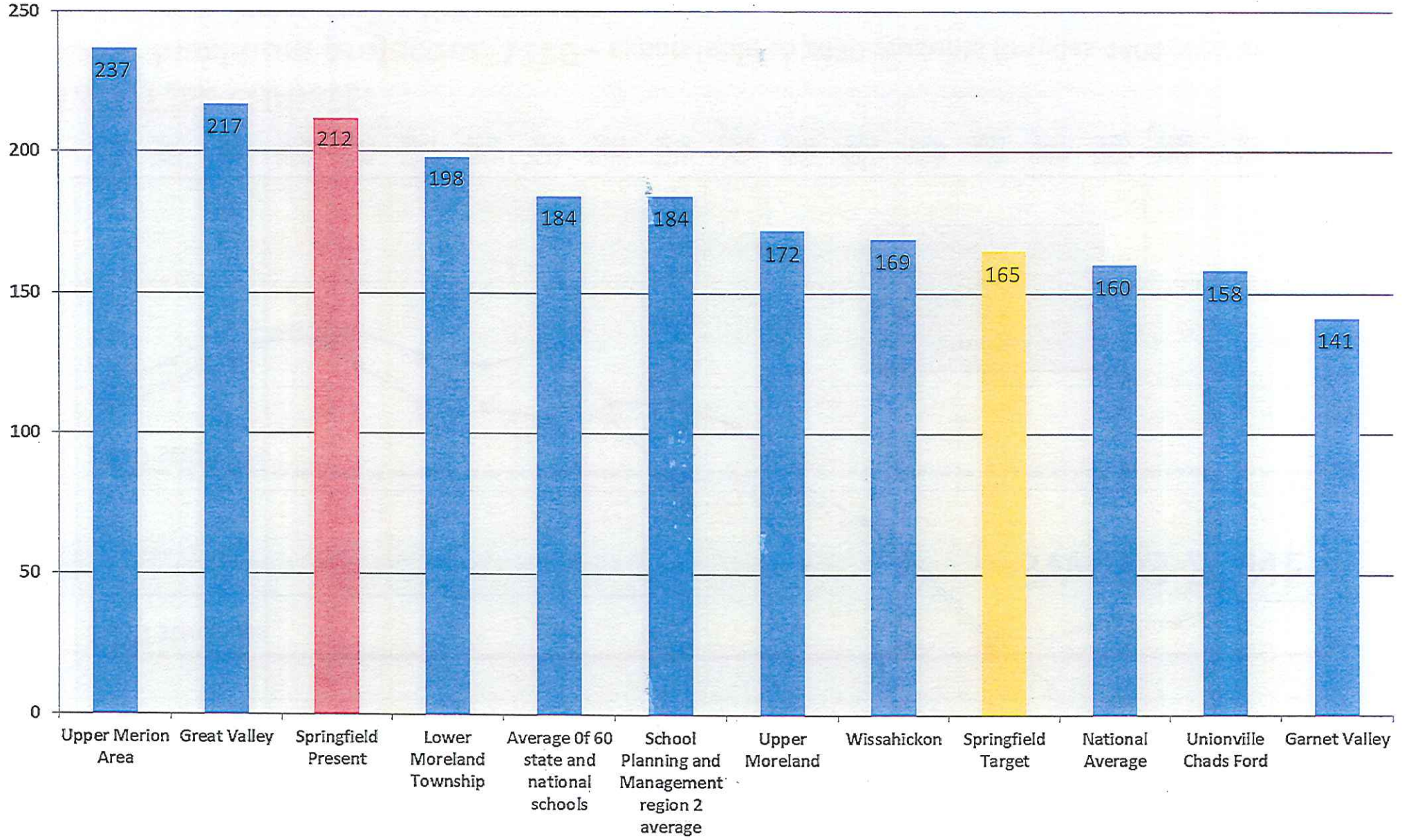
Existing Building / Right-Sizing / Education Model

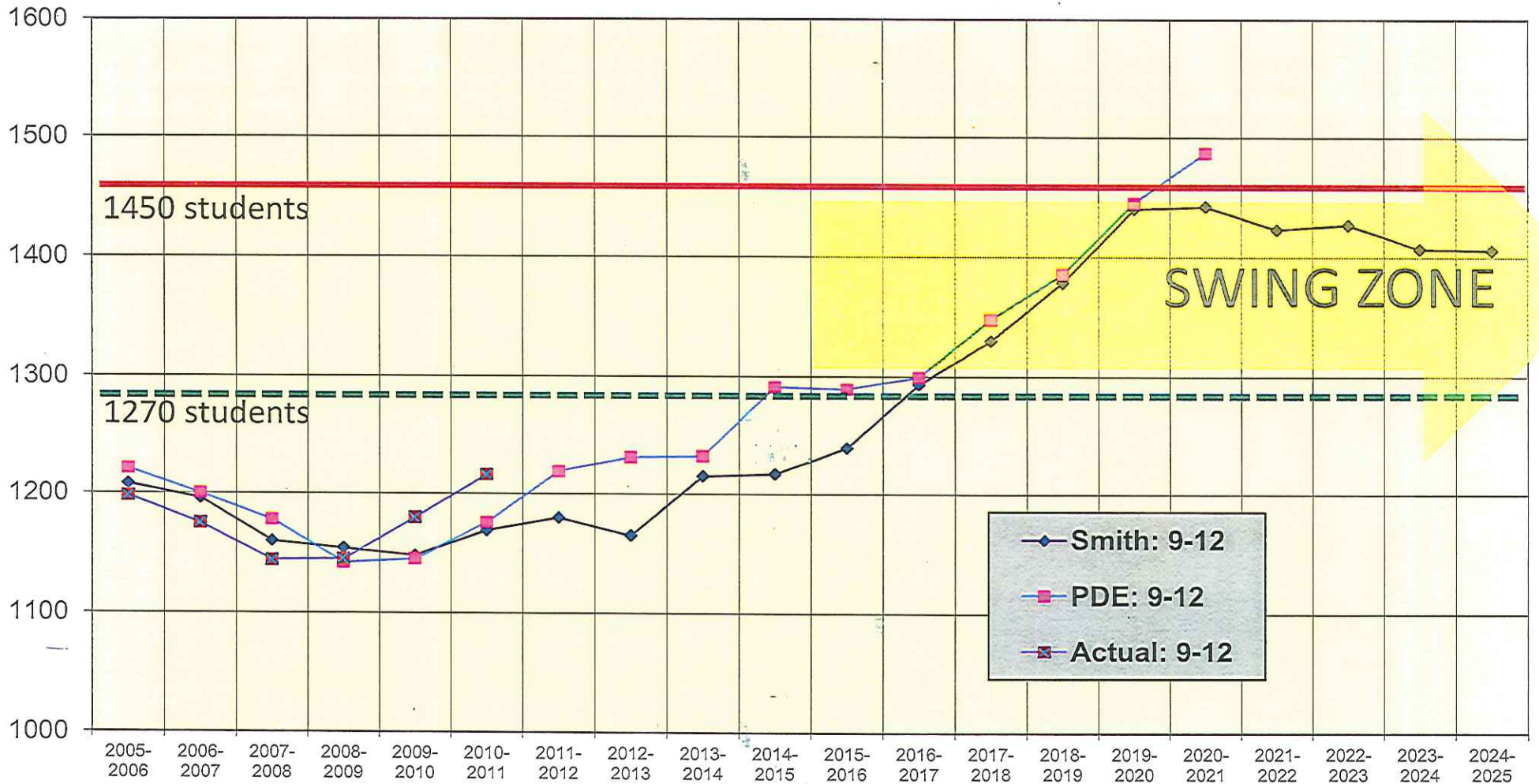
Presentation Outline

- Existing Facility
- Right Sizing the 'Box'
- Education Goals
- Discussion

An aerial photograph of a school campus. The central focus is a large, multi-story building with a complex roofline, likely a school building. To the right of this building is a large, rectangular field, possibly a sports field or a parking lot. The surrounding area is densely packed with smaller buildings, likely residential or commercial structures. The overall scene is captured from a high angle, showing the layout of the campus and its integration with the surrounding urban environment.

Right Sizing the 'Box' / Program Goals



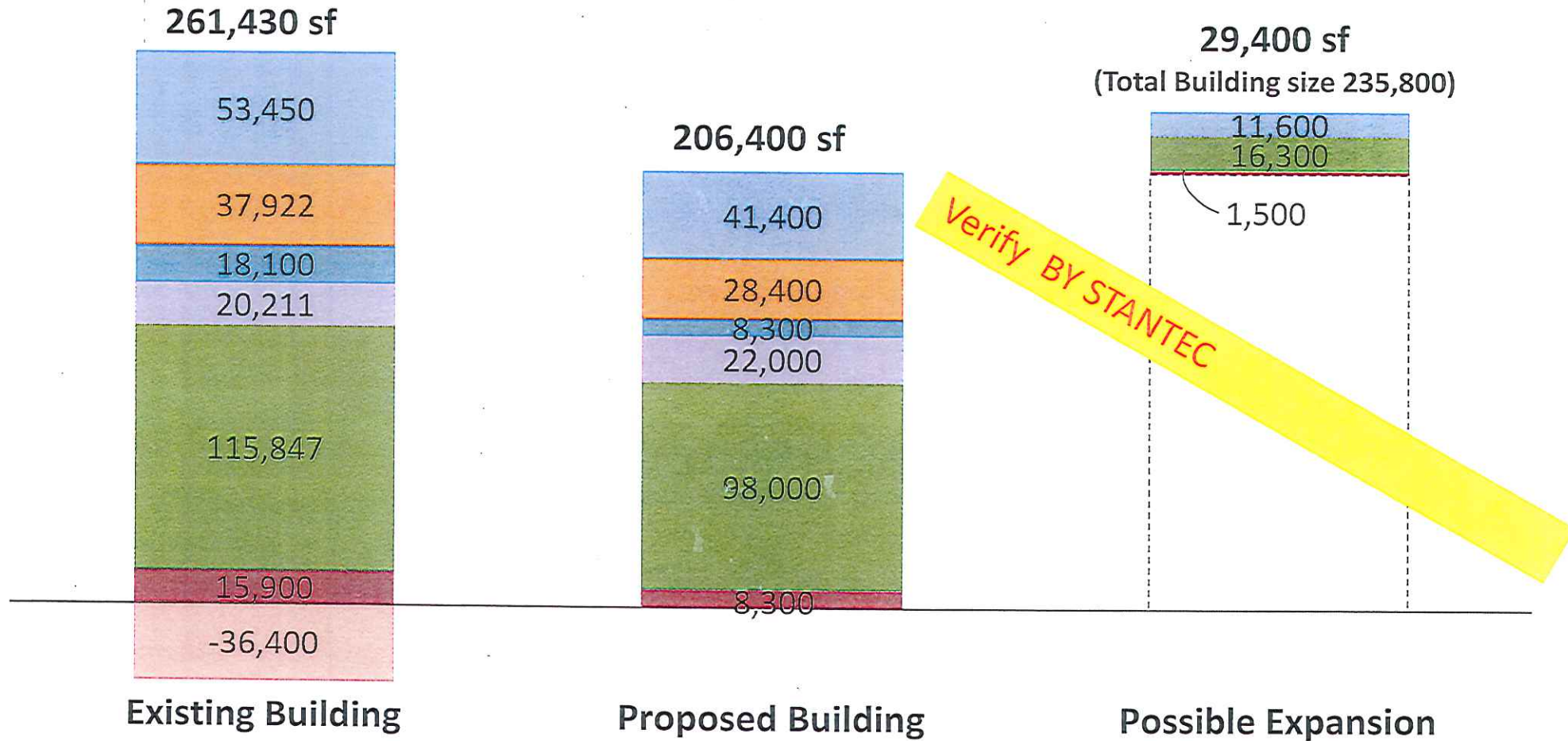


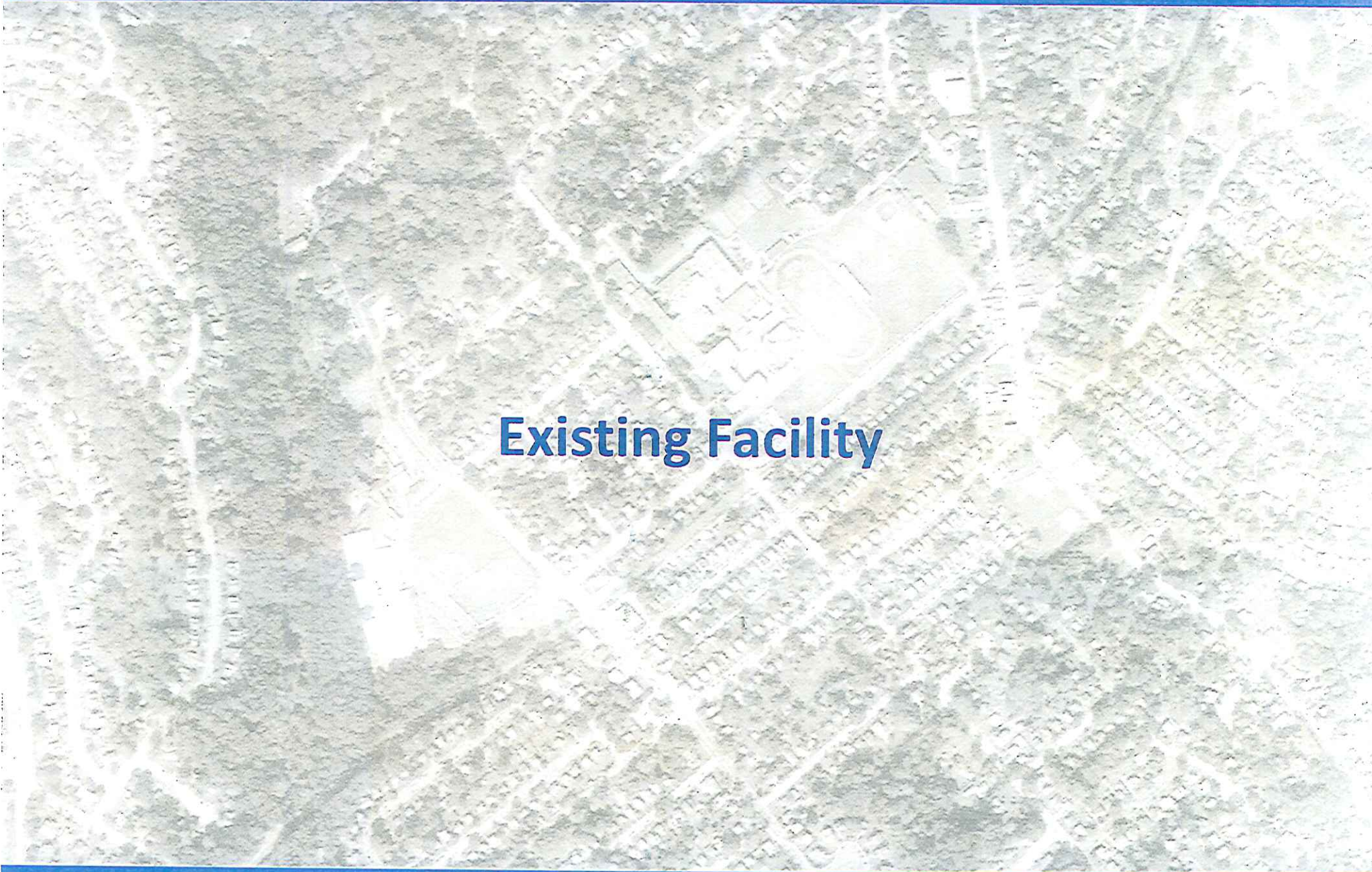
COMMITTEE CHARGE:

Assume maximum projection 1270 - expandable to 1450 students (implies 4400 total students)

Note: 85% of projected peak is 1233 students

- School Admin
- Classrooms
- Food
- Media Center
- Auditorium
- Physical Edu.
- District Admin

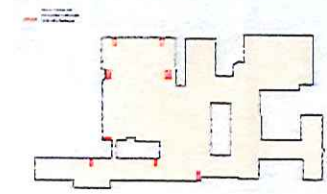




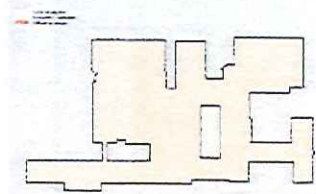
Existing Facility



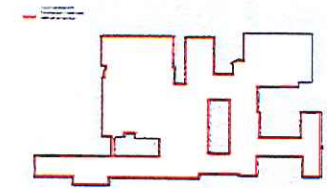
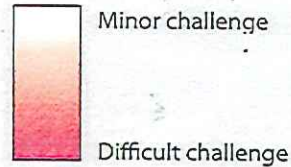




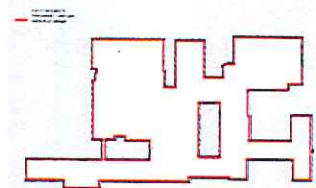
Code



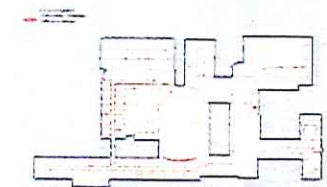
Roofing



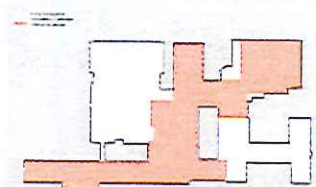
Windows



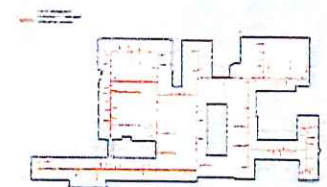
Envelope



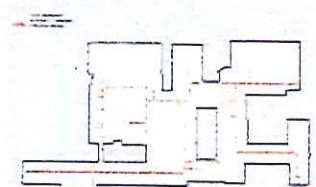
Electric



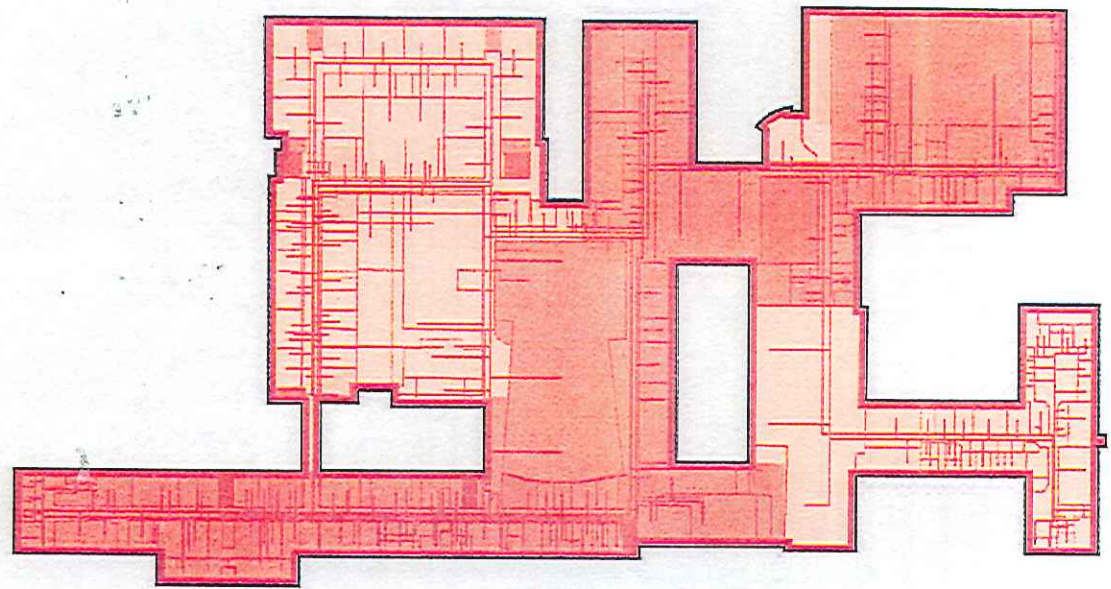
Asbestos Roof Deck



HVAC



Plumbing

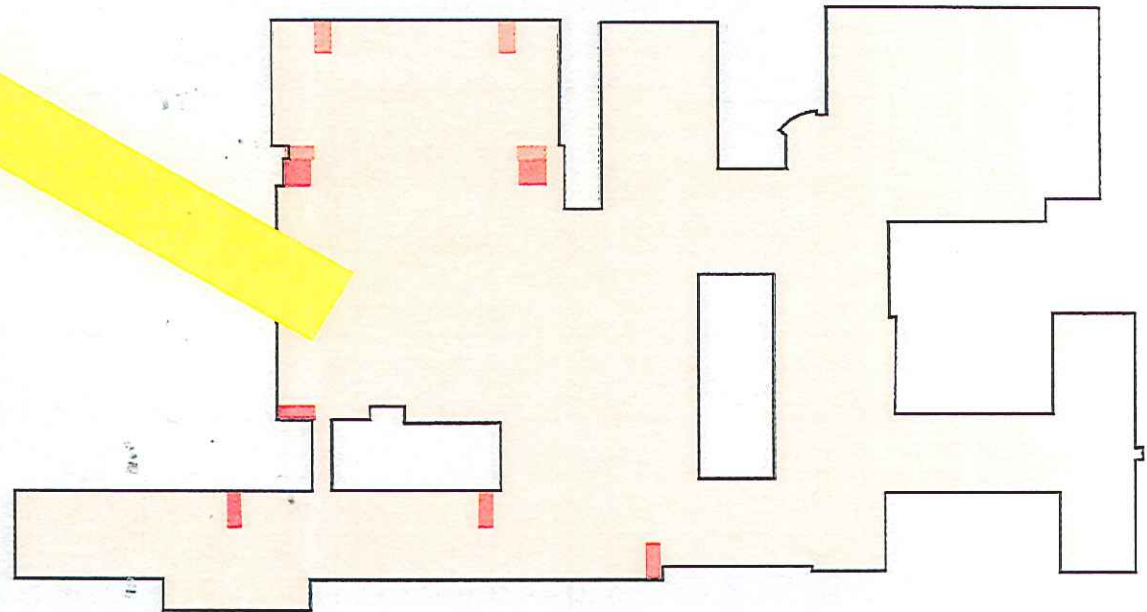


Composite of Issues

Existing building does not meet the current , more stringent building codes (exit stairs, hallway, fire separation, etc.)



Minor challenge
Moderate challenge
Difficult challenge

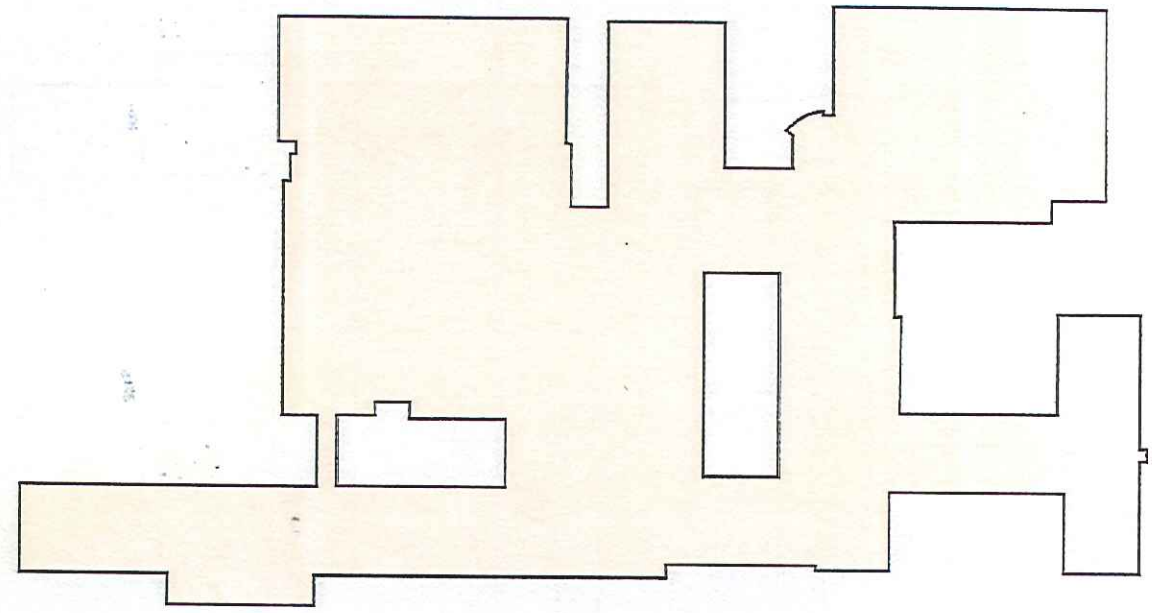


Composite of All Floors

Membrane and insulation replacement required



Minor challenge
Moderate challenge
Difficult challenge

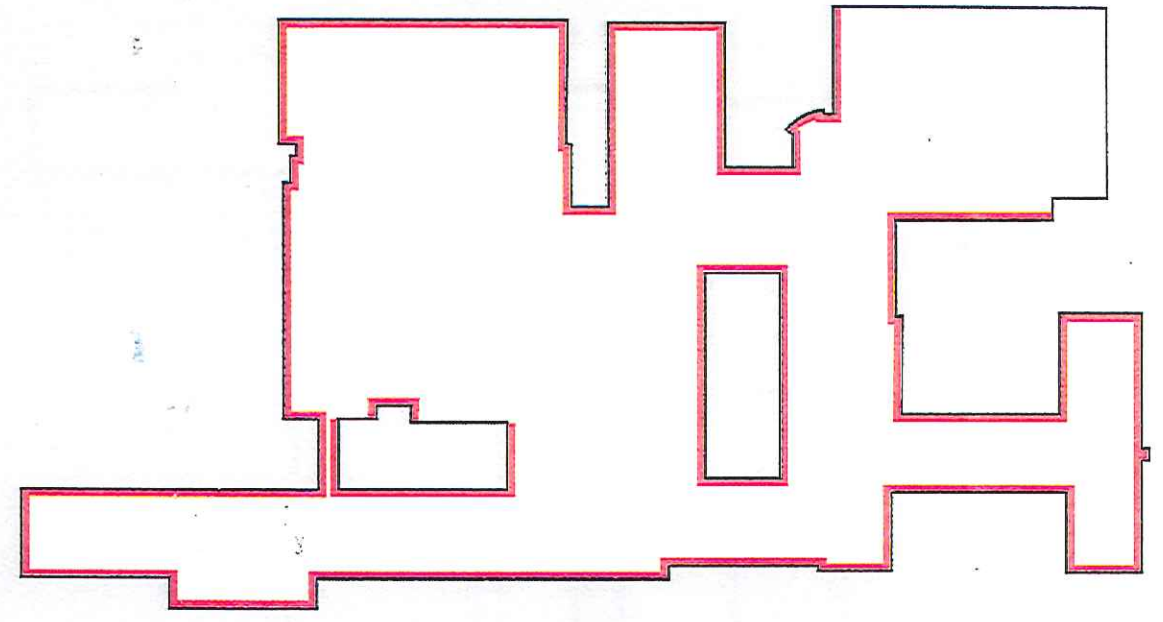


Composite of All Floors

Older windows poor energy performance



Minor challenge
Moderate challenge
Difficult challenge

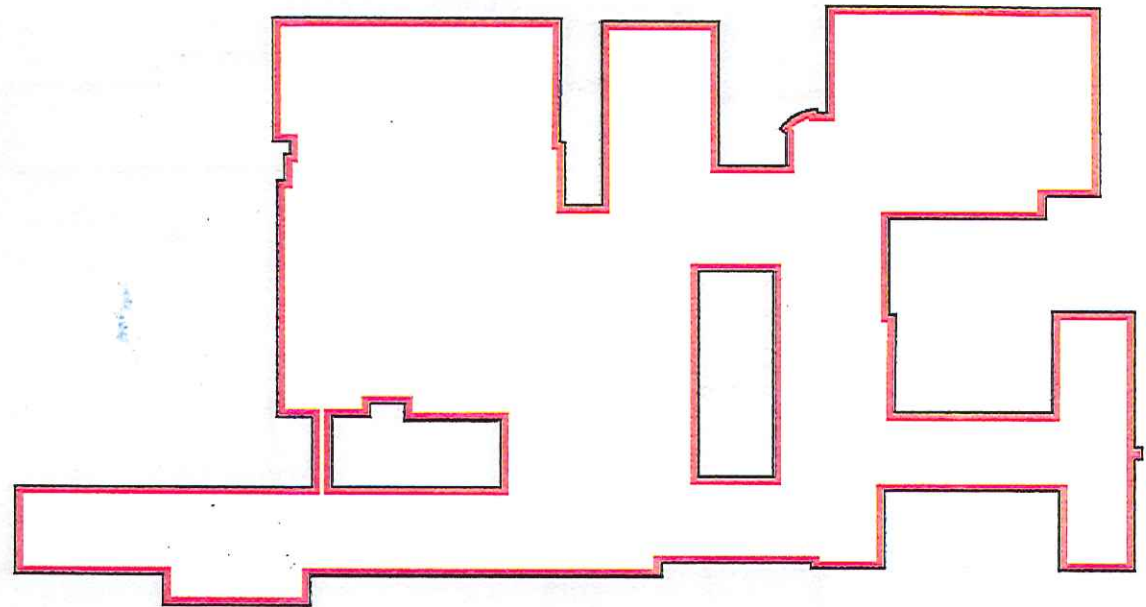


Composite of All Floors

Lack of insulation and poor energy performance

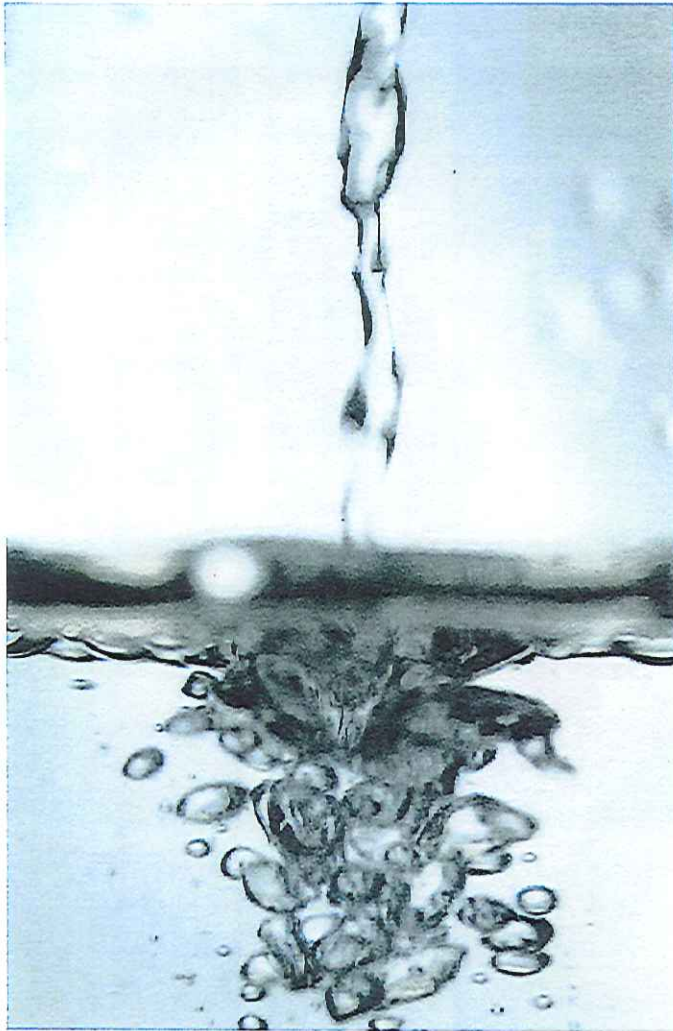


Minor challenge
Moderate challenge
Difficult challenge

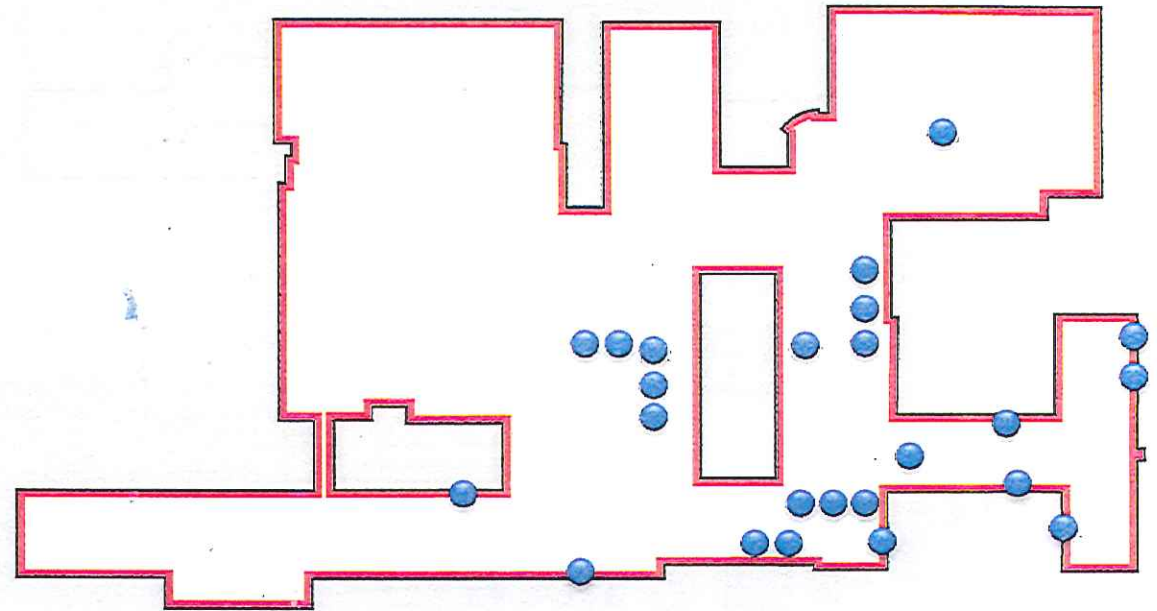


Composite of All Floors

Recent building envelope leaks observed following the last major rain event (May 16, 2014)



Minor challenge
Moderate challenge
Difficult challenge

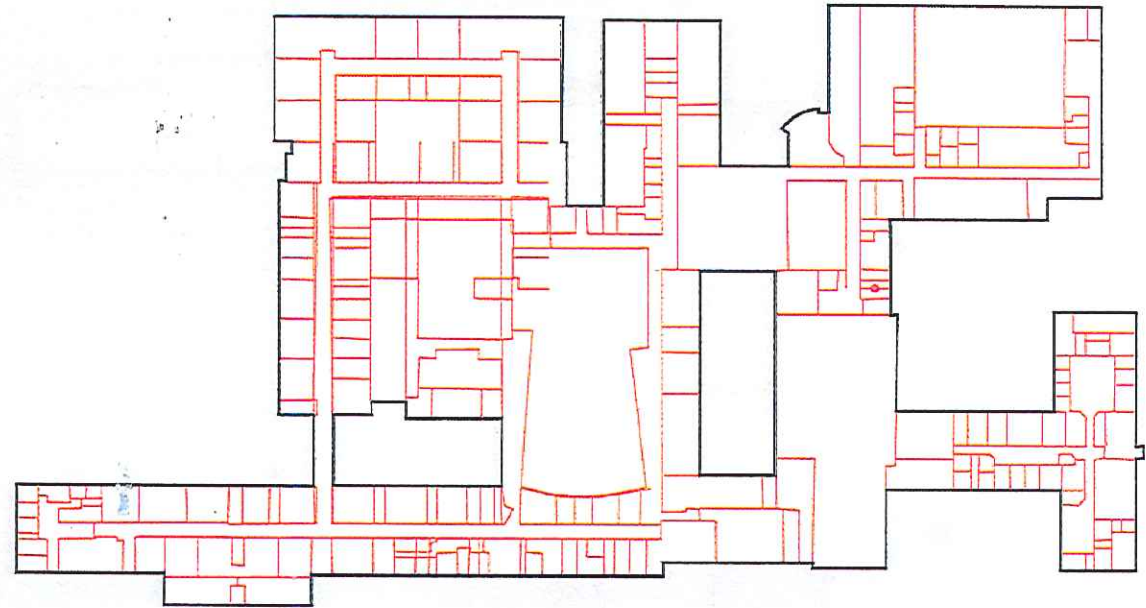


Composite of All Floors

Outdated and undersized electrical systems



Minor challenge
Moderate challenge
Difficult challenge

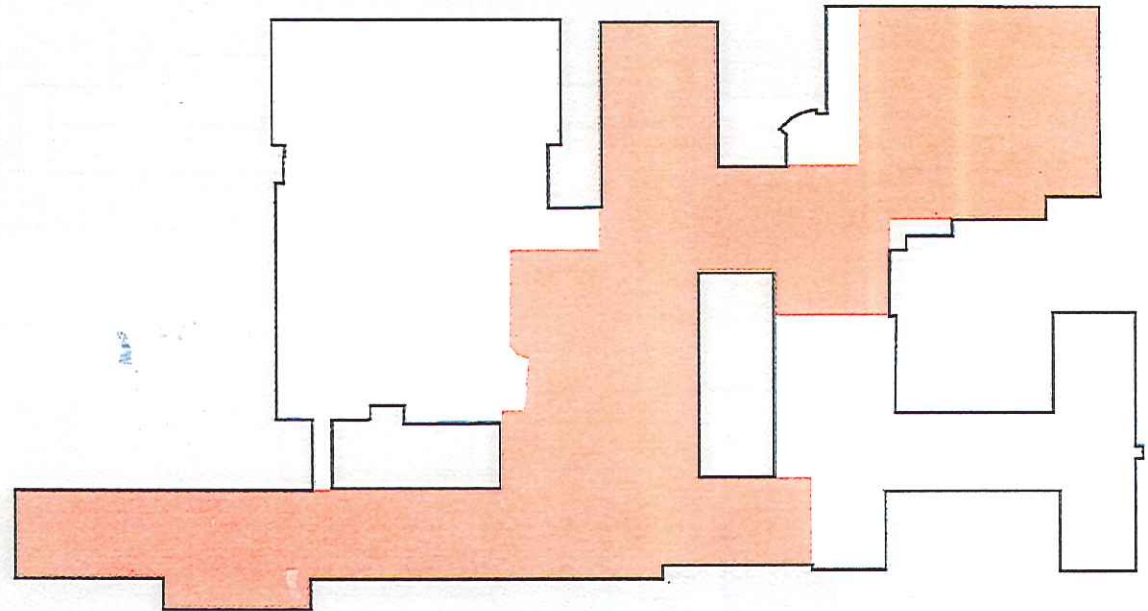


Composite of All Floors

Asbestos containing roof panels



Minor challenge
Moderate challenge
Difficult challenge

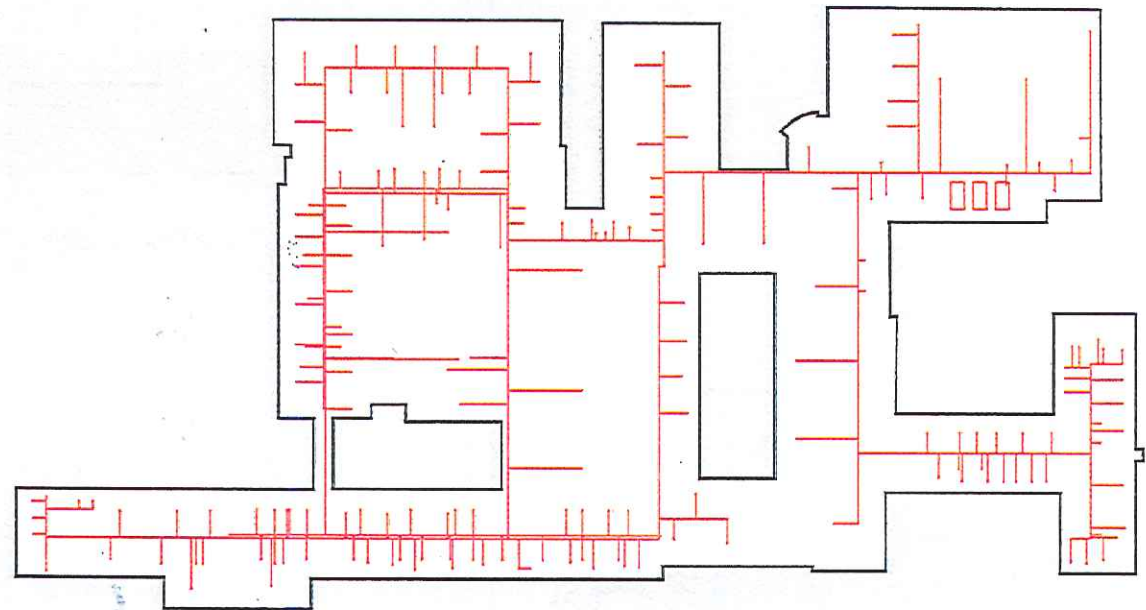


Composite of All Floors

Outdated or nonexistent heating and ventilation, with very limited A/C systems area



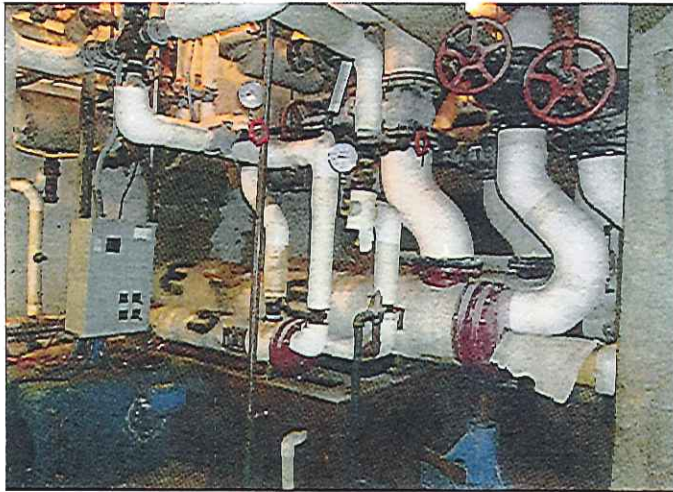
Minor challenge
Moderate challenge
Difficult challenge



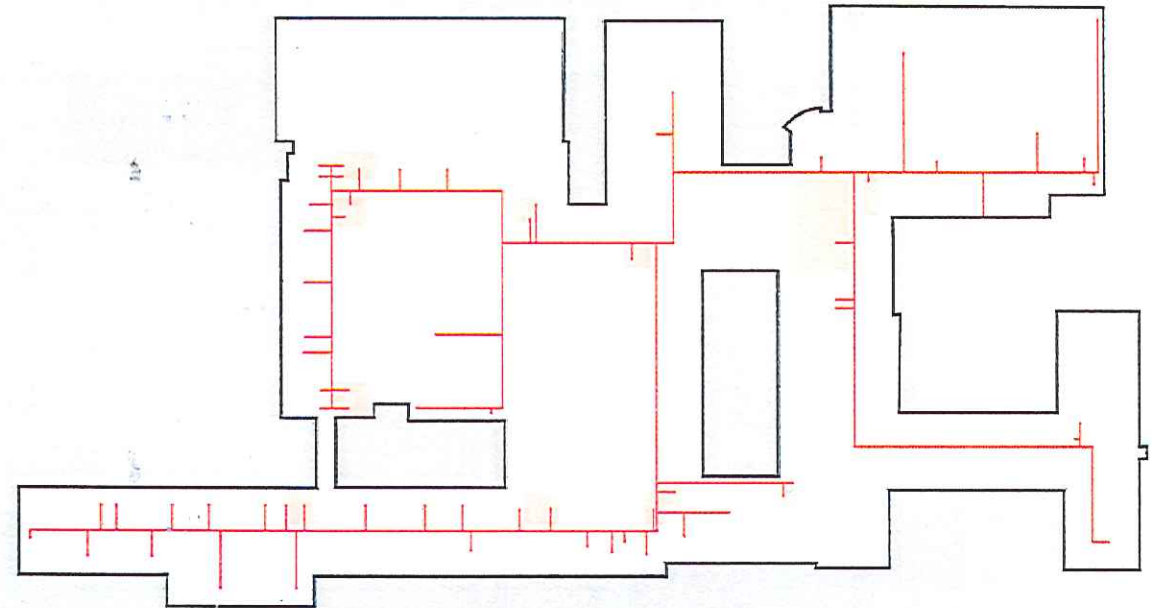
"The only thing worth saving are the tools"

Composite of All Floors

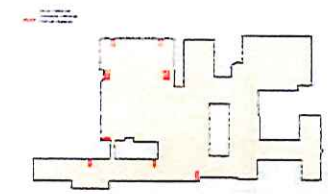
Outdated plumbing systems approaching end of service life



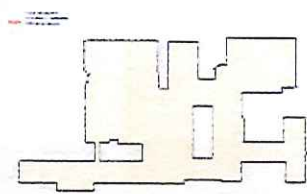
Minor challenge
Moderate challenge
Difficult challenge



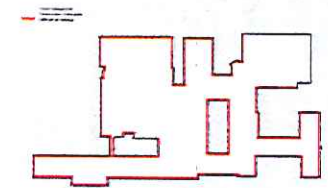
Composite of All Floors



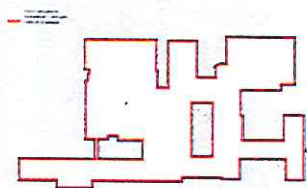
Code



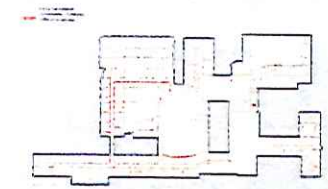
Roofing



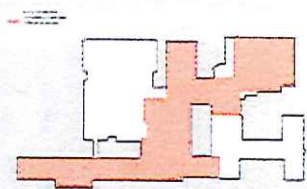
Windows



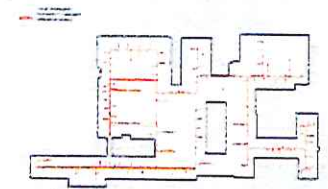
Envelope



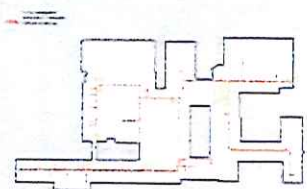
Electric



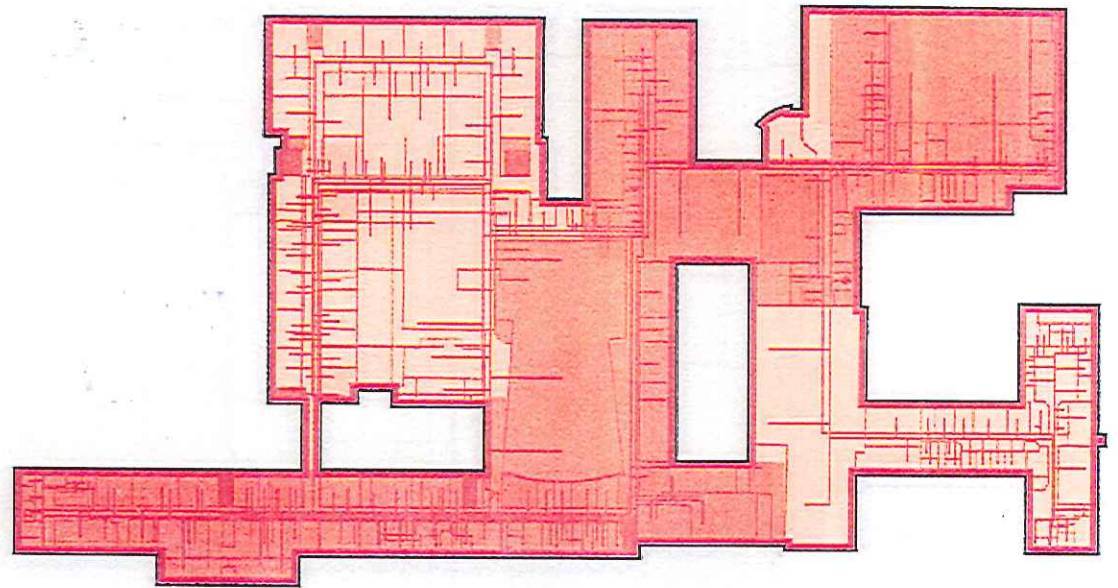
Asbestos Roof Deck



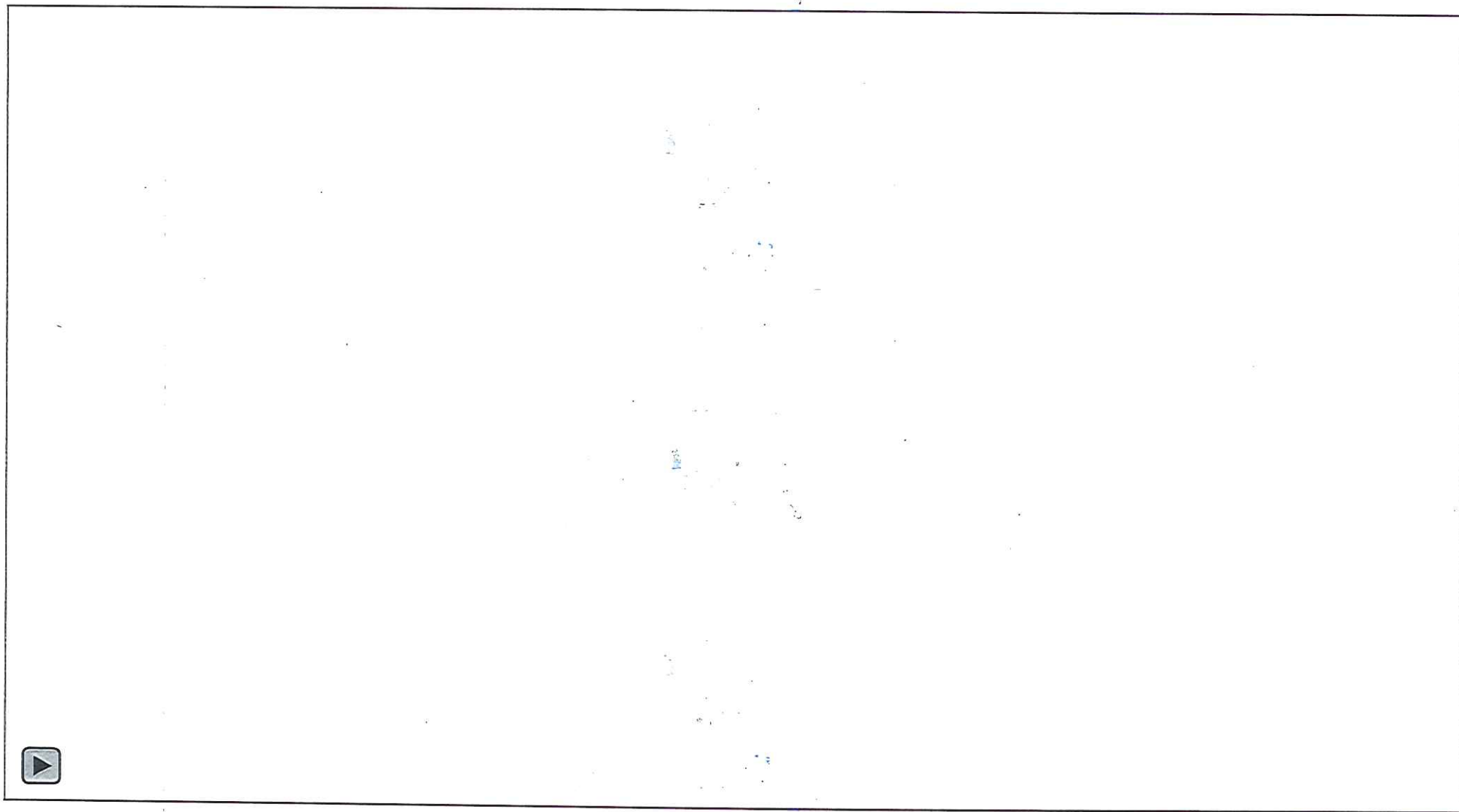
HVAC



Plumbing



Composite of Issues

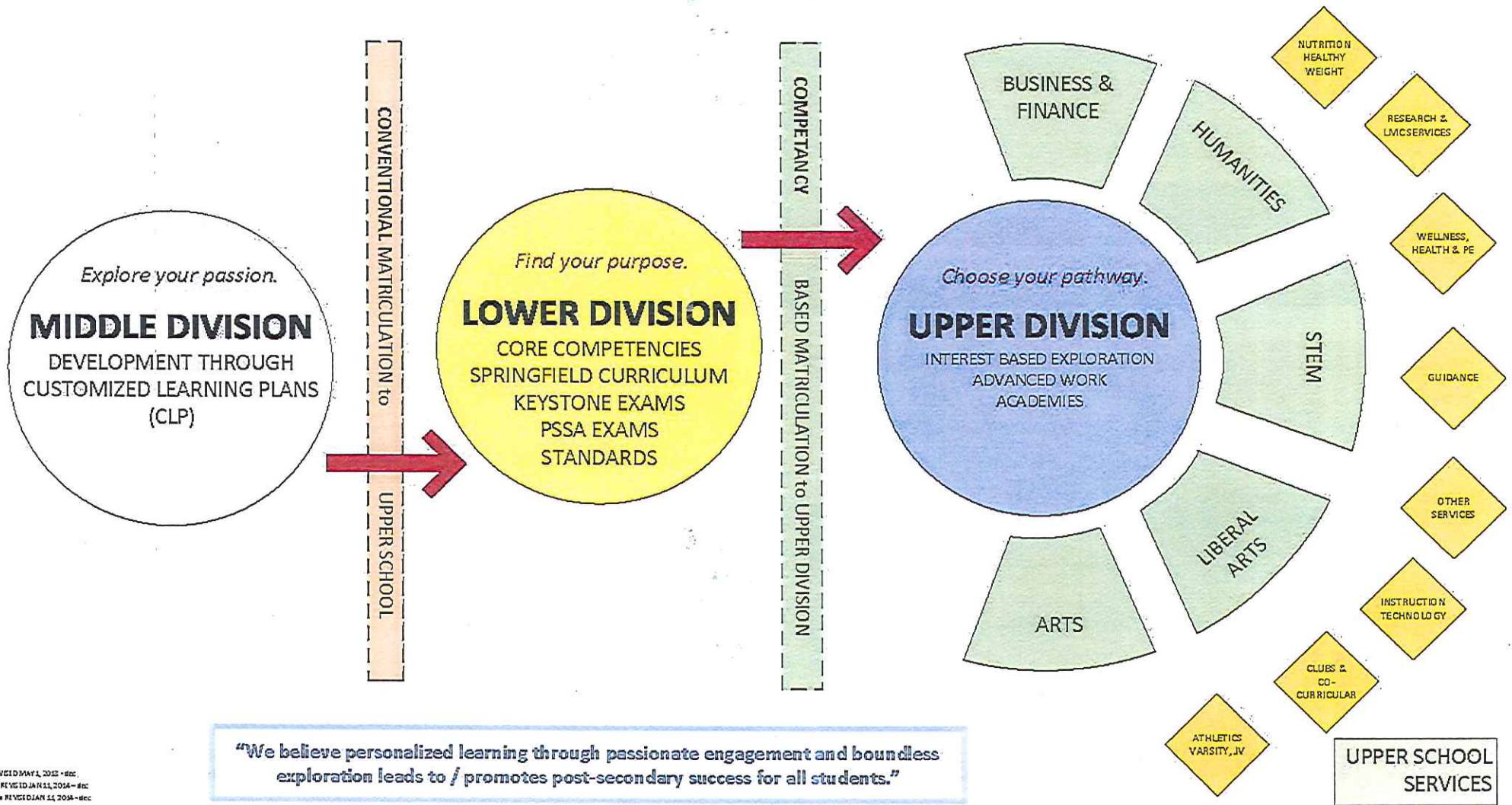


An aerial photograph of a residential neighborhood. The houses are arranged in a grid pattern with narrow streets. In the center of the neighborhood, there is a large, light-colored building, likely a school, with a rectangular shape and a flat roof. The surrounding area is densely packed with houses. The text "Education Goals" is overlaid in the center of the image.

Education Goals

SPRINGFIELD PUBLIC ACADEMY

A new public post-secondary model for education
"Teach every student to LEARN"



REVISED MAY 1, 2012 - HBC
 RE-REVISED JAN 11, 2014 - HBC
 RE-REVISED JAN 11, 2014 - HBC

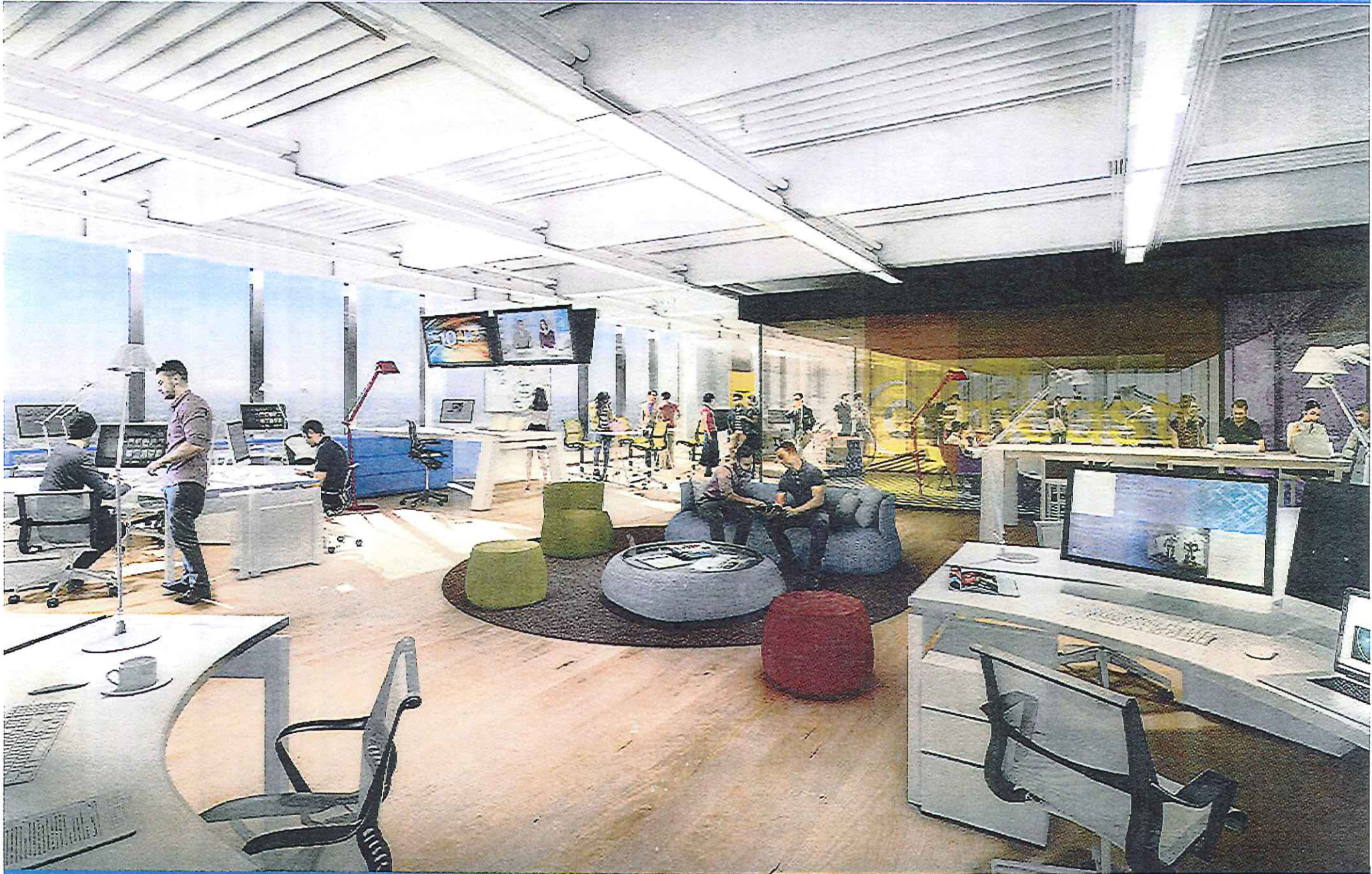


Priority Shifts

From	To
Management centric	Worker centric
Passive working	Active working
Work individually	work collaboratively
Work in office	Work anywhere

From	To
Limited Technology	Ubiquitous technology
Assertive assessment	Demonstrative assessment
Disciplines separated	Disciplines integrated
Conformity expected	Individuality celebrated

How has the workplace evolved?



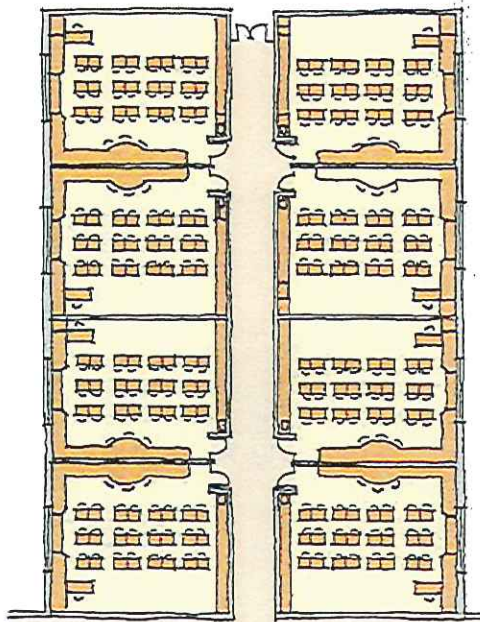
Exemplar Collaboration/Open Office



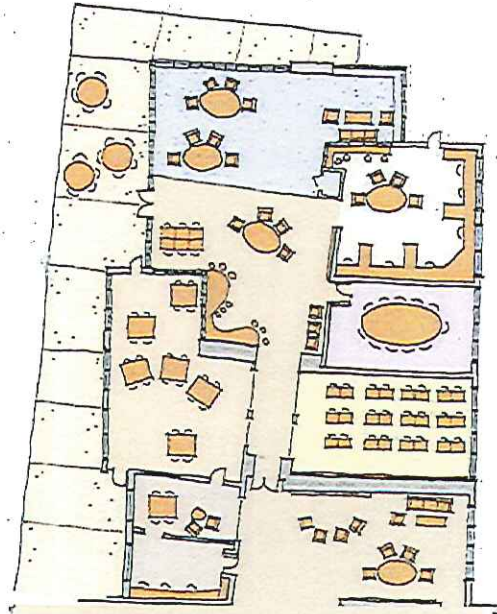
Exemplar Collaboration/Open Office



Exemplar Conference/Teaming Area



Traditional classroom configuration



21st century classroom configuration

Priority Shifts

From	To
Teacher centric	Student centric
Passive learning	Active learning
Focus on 3 Rs	Develop 4 Cs (Critical thinking, Collaboration, Creativity, Communication)
Learn in classroom	Learn everywhere

From	To
Limited Technology	Ubiquitous technology
Assertive assessment	Demonstrative assessment
Curriculum fragmented	Curriculum integrated
Conformity expected	Individuality celebrated

How has the learning environment evolved?

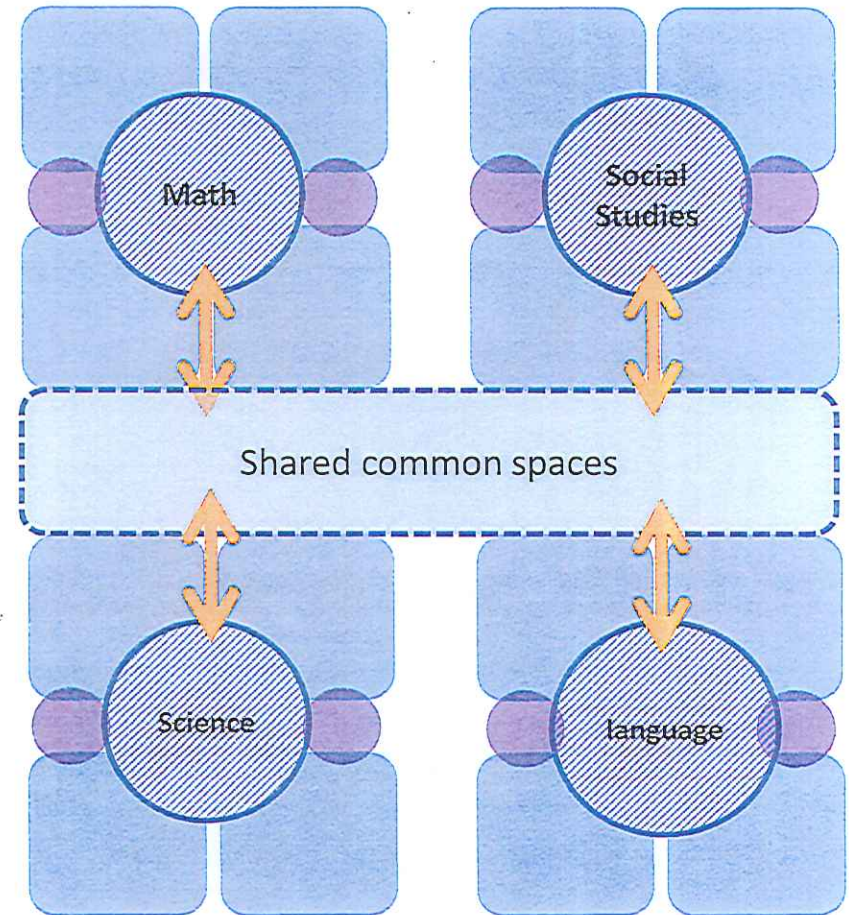
Lower Division: *Find your purpose*

- Focused on developing core competencies and meeting requirements of Pennsylvania Department of Education



Organized departmentally with minimal elective based shared space

- Math
- Social Studies
- Science
- Language Arts
- World Language



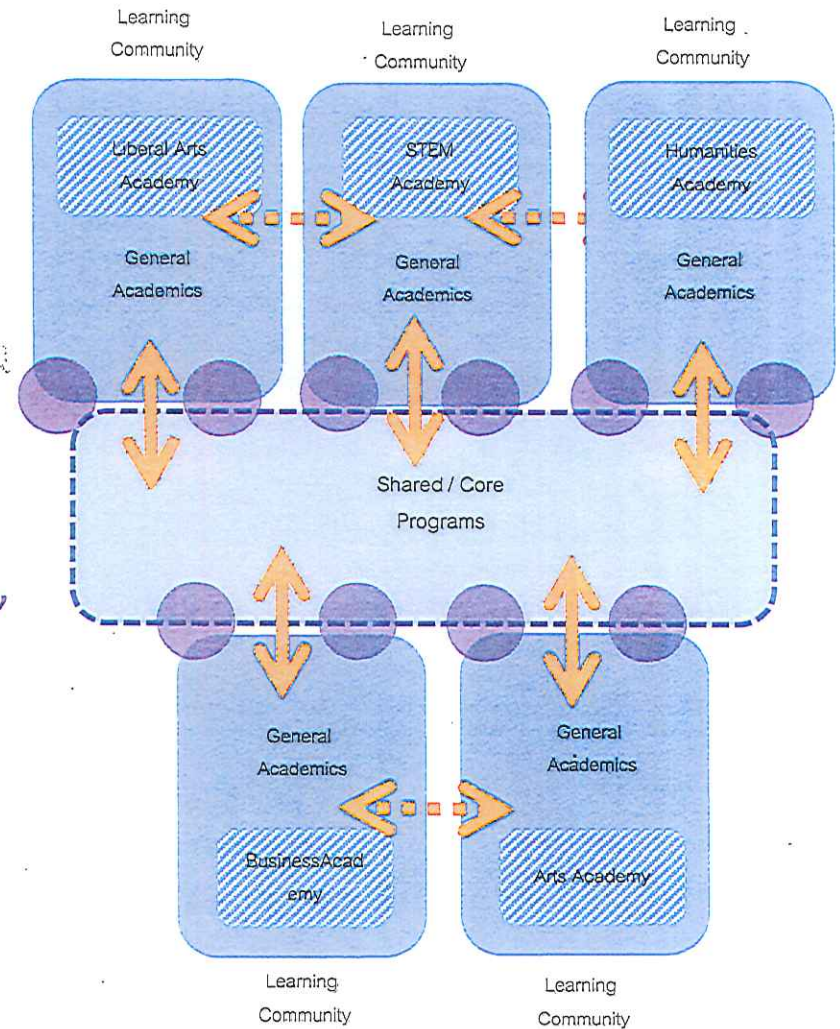
Upper Division: *Choose your pathway*

- Mission: To provide an innovative, customized learning experience for each student that produces college and career ready, lifelong learners.
- Goal: 100% of students attaining college credit prior to graduation.



“collection of small learning communities”

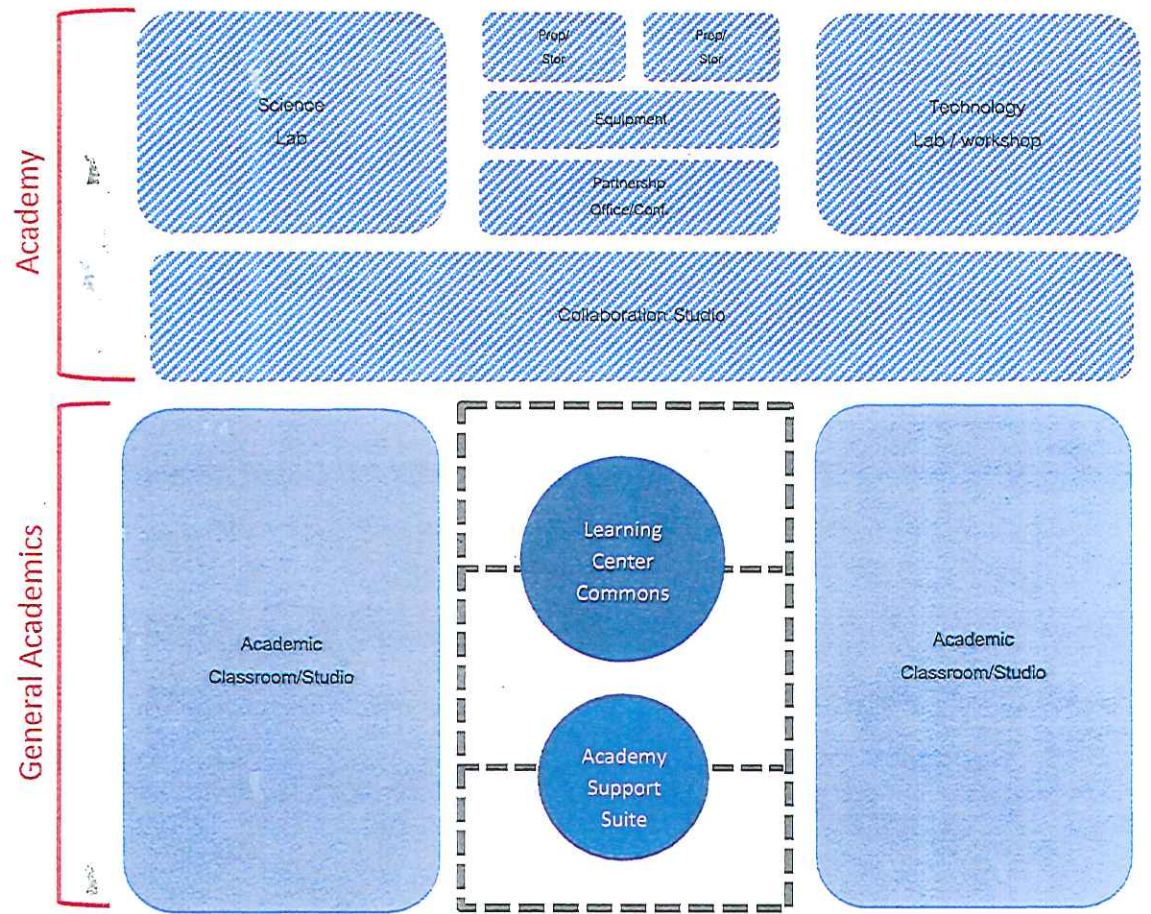
- | | |
|--------------|----------------|
| ▪ STEM | ▪ Arts |
| ▪ Humanities | ▪ Liberal Arts |
| ▪ Business | |



Learning Community as Career Academy

STEM Academy

- Flexible and adaptable
- Project based learning
- Parity among learning communities
- Administrative presence
- Community partnerships



An aerial photograph of a residential development. The image shows a grid-like street pattern with numerous small, uniform houses. In the center of the development, there is a larger, more complex building structure, possibly a school or community center, with a distinct layout including a large open area and several interconnected buildings. The surrounding area is densely packed with similar residential units. The text "Examples and Exemplars" is overlaid in the center of the image.

Examples and Exemplars



Existing labs

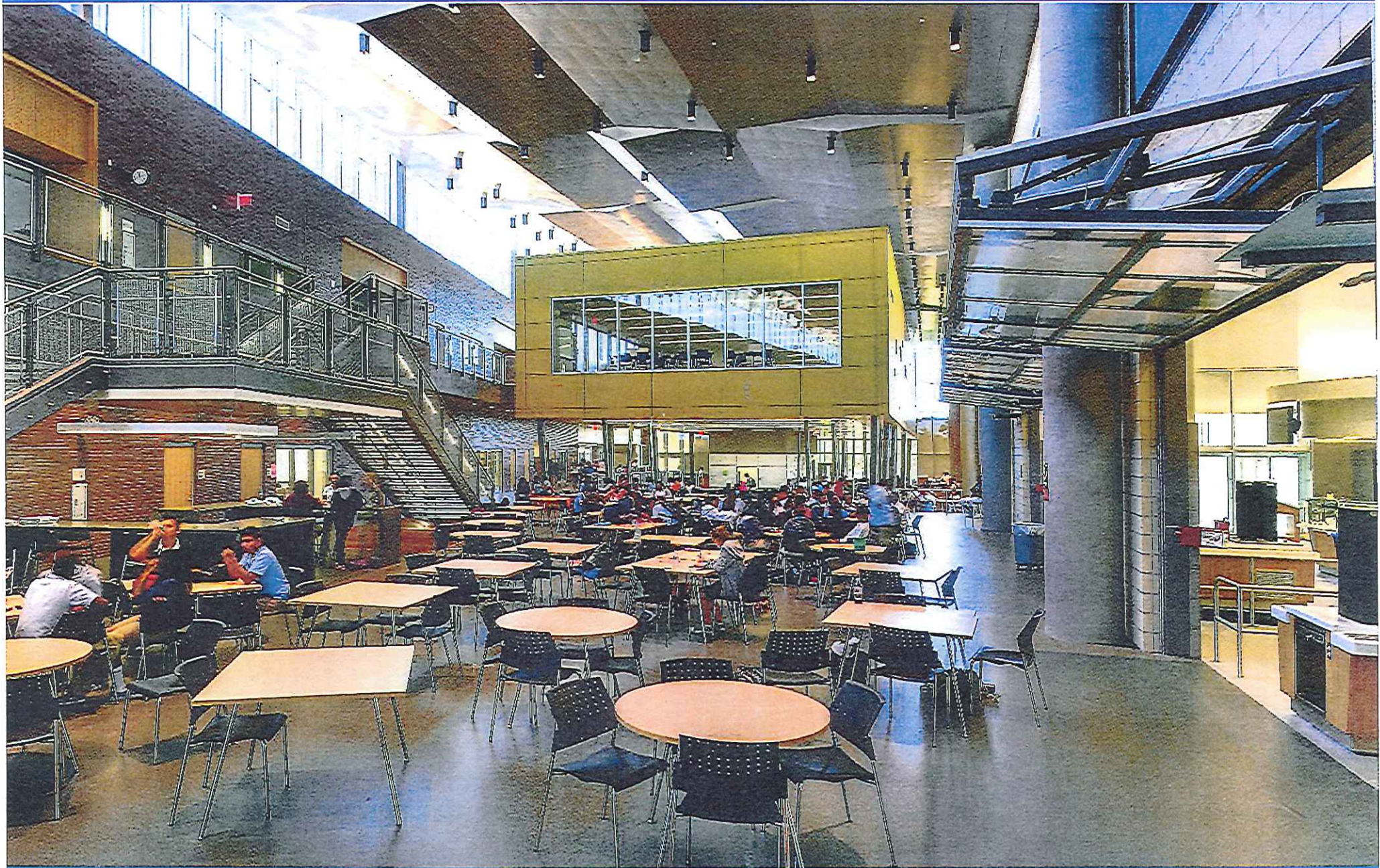


Exemplar Lab

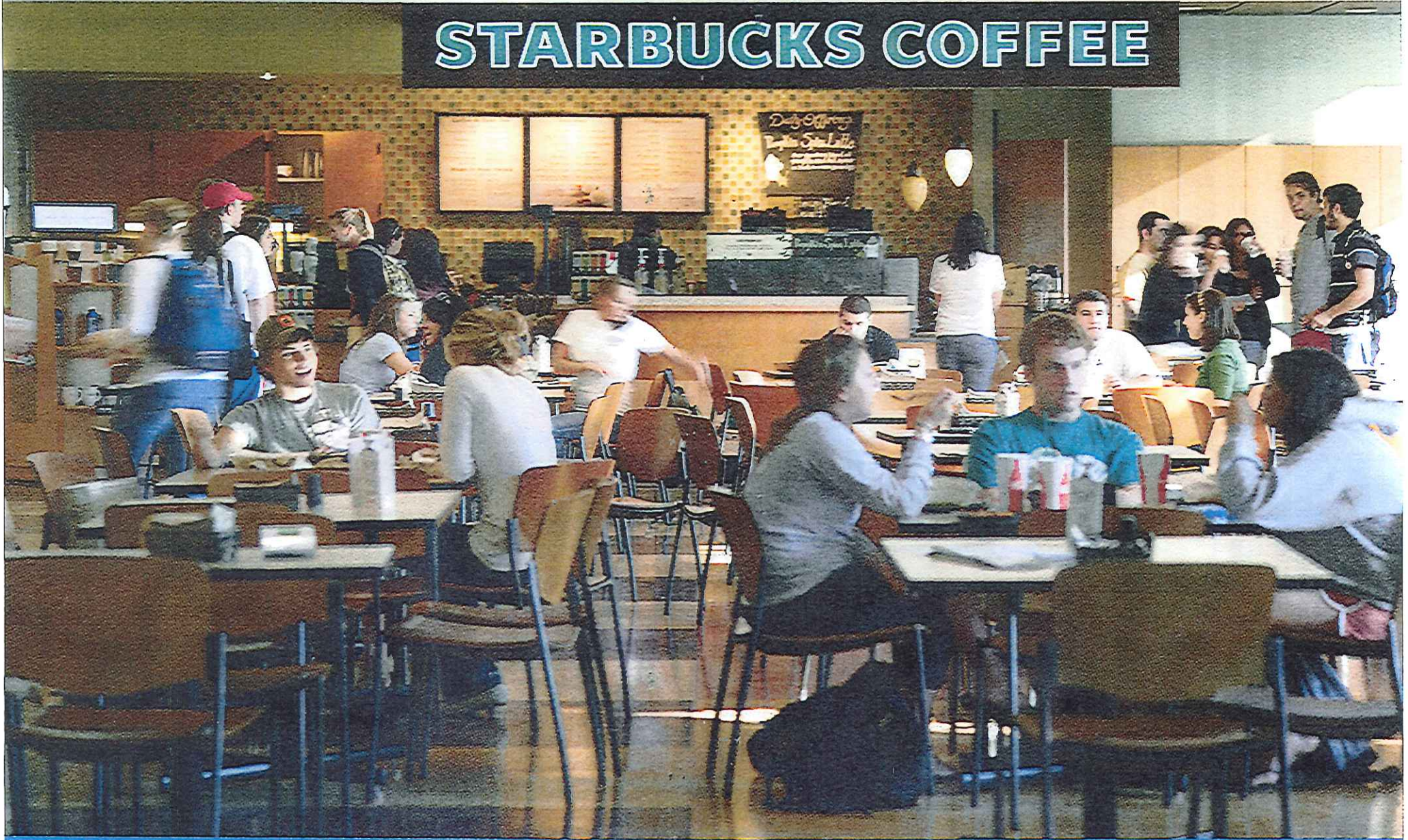


Existing Learning Resource Center







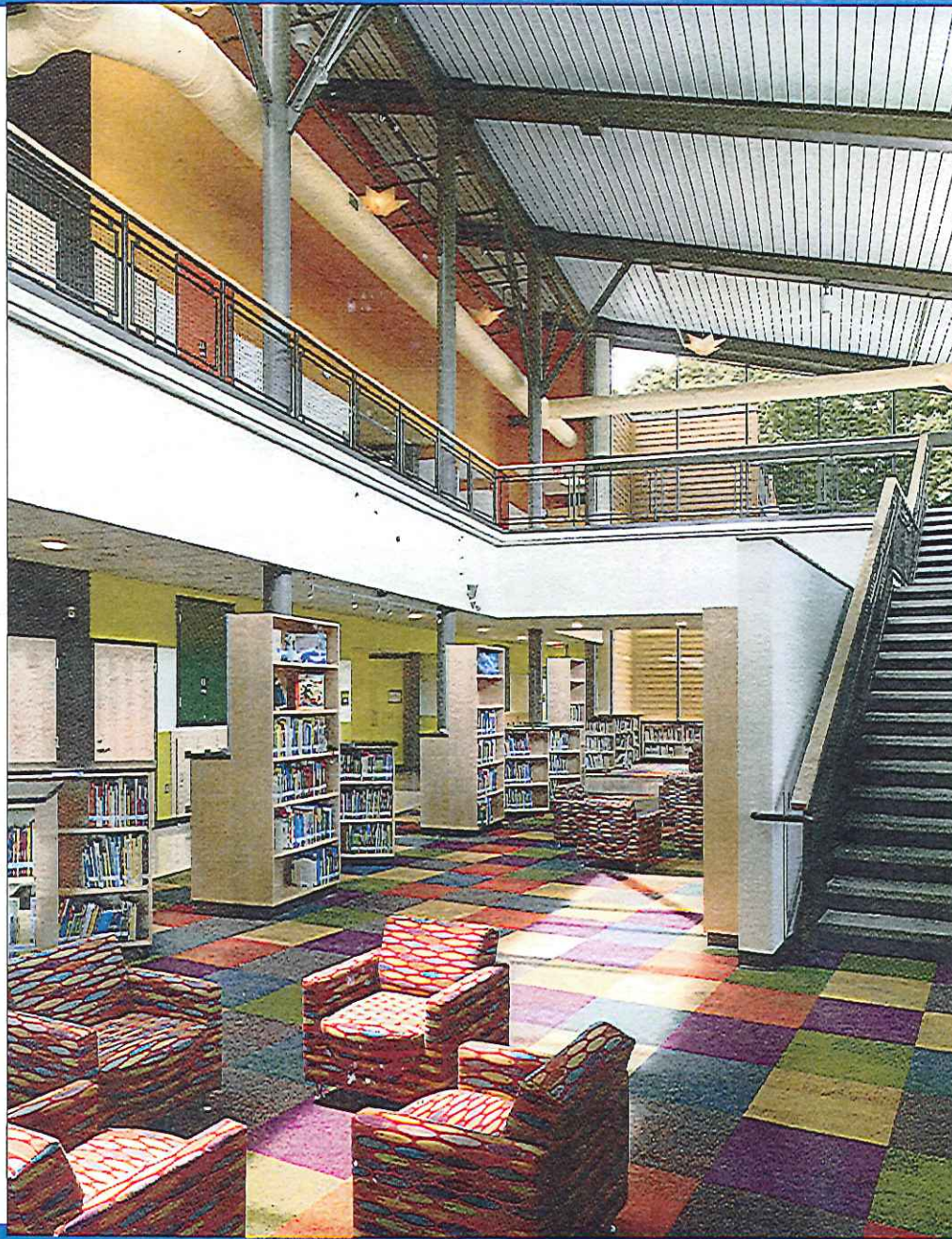


Exemplar







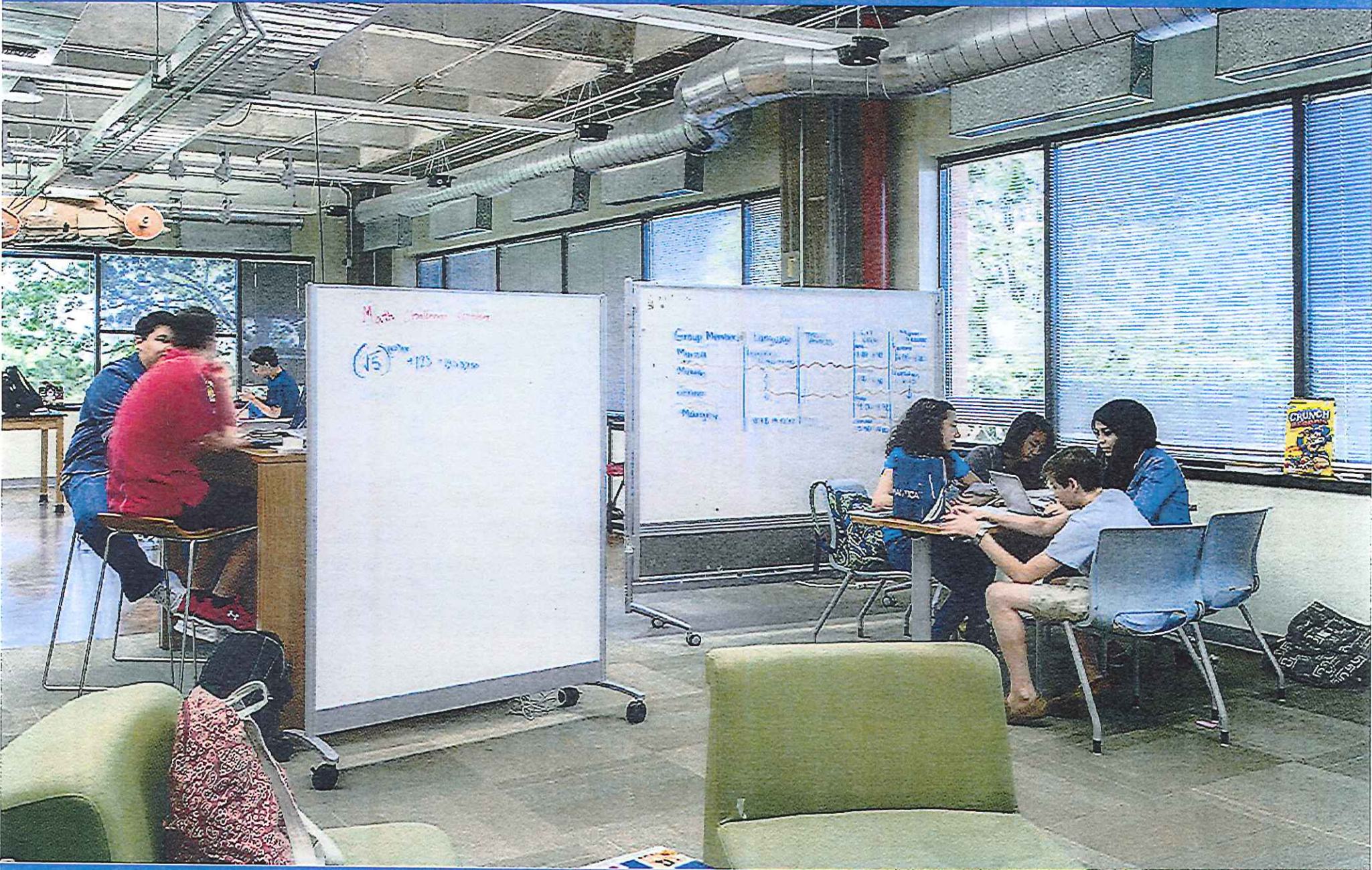




Existing Classrooms



Exemplar Classroom



Exemplar Classroom



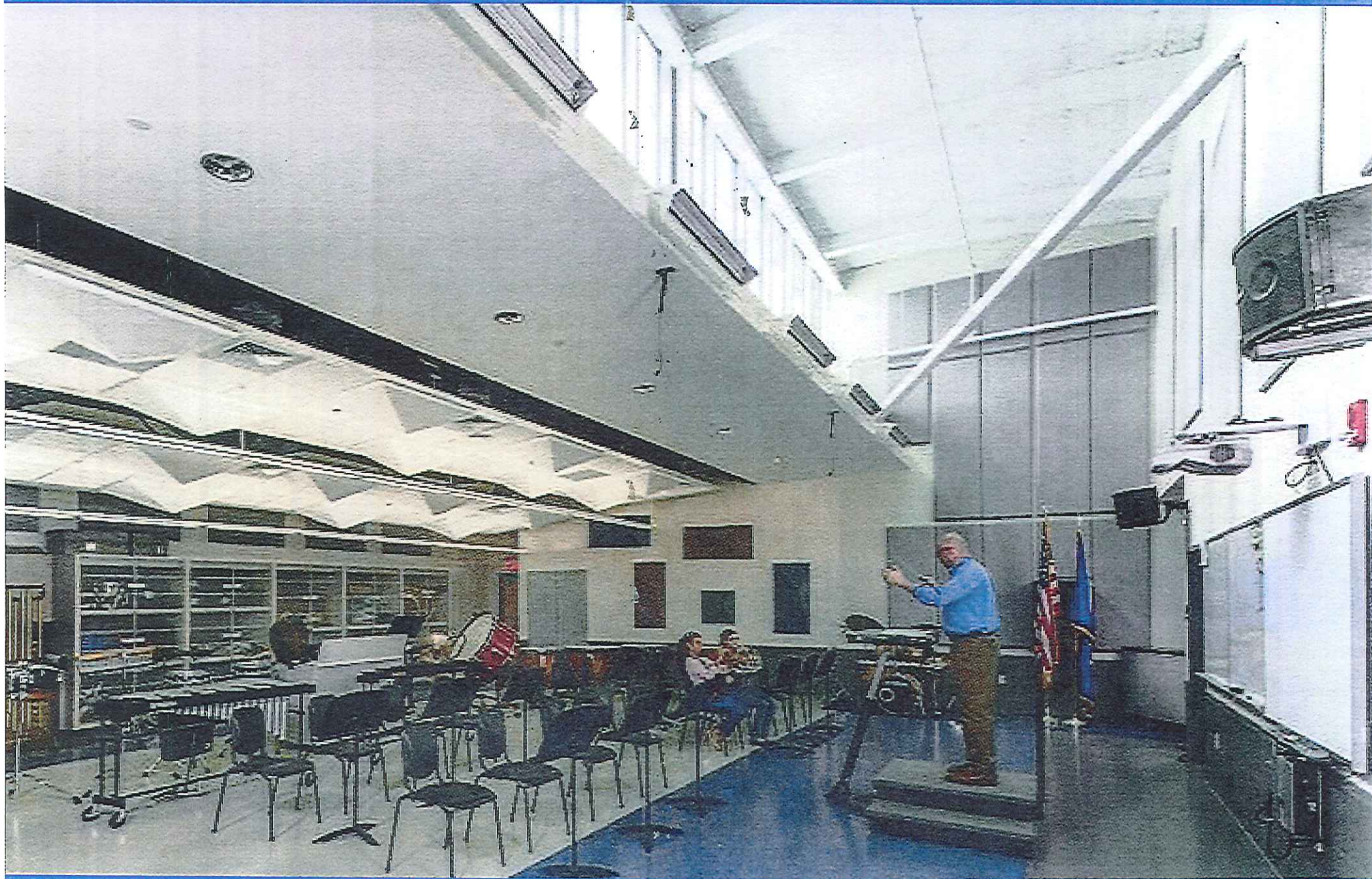
Exemplar Classroom



Exemplar Classroom



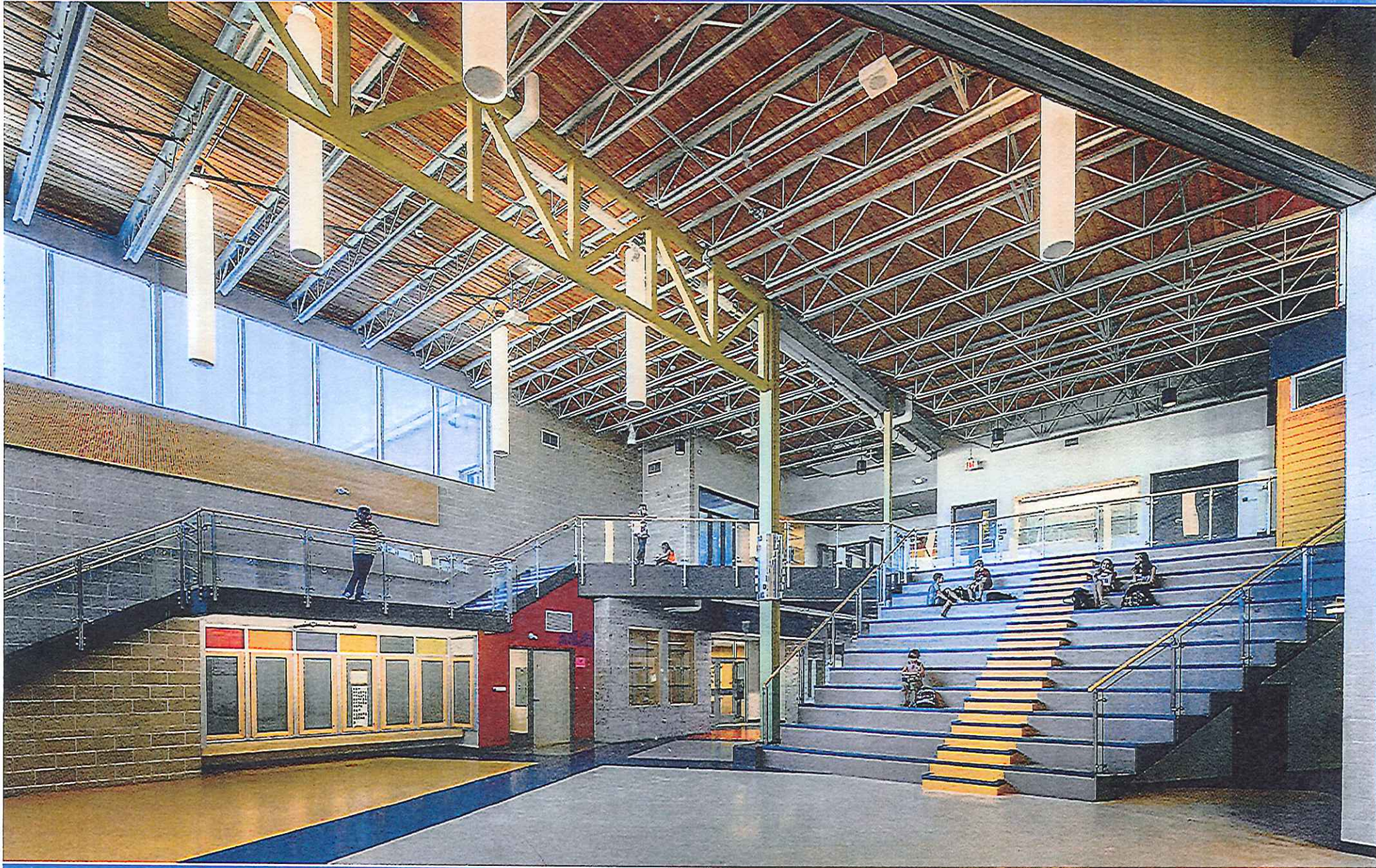
Existing Rehearsal Space



Exemplar Rehearsal



Exemplar gaming station for kinetic learning



Exemplar demonstrative learning / collaboration space



Exemplar collaboration space



Exemplar collaboration space

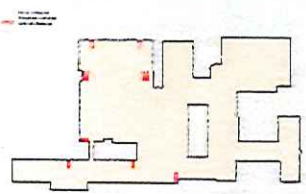
Discussion

Town Hall Meetings

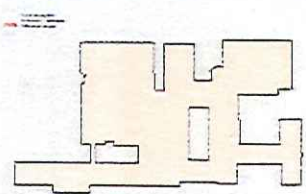
- **Town Hall Meeting 1** (insert date)
Repeat Presentation of May 22, 2014 Board Meeting
- **Town Hall Meeting 2** (insert date)
Existing Building / Right-Sizing / Education Model
- **Town Hall Meeting 3** (insert date)
Phasing / Traffic and Parking
- **Town Hall Meeting 4** (insert date)
Community/ Academic / Athletics and Recreation / Sustainability
- **Town Hall Meeting 5** (insert date)
Financial Options / Cost Options / Tax Impact
- **Town Hall Meeting 6** (insert date)
Recap / Summary / Options for Moving Forward

An aerial photograph showing a large residential development. The central part of the image features a complex of buildings, including a large rectangular structure with a curved roofline and several smaller rectangular buildings. The surrounding area is densely packed with houses, each with a distinct roof. The overall layout is organized and planned. The word "Appendix" is overlaid in the center of the image.

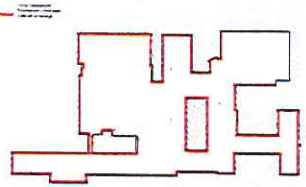
Appendix



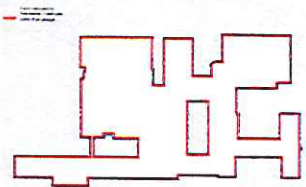
Code



Roofing



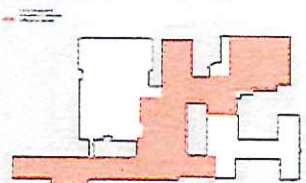
Windows



Envelope



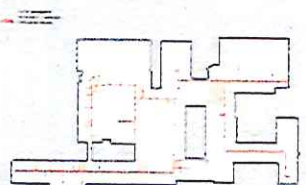
Electric



Asbestos Roof Deck



HVAC



Plumbing